

Datasheet for ABIN2855165
anti-CTBP1 antibody (Center)

2 Images

[Go to Product page](#)

Overview

| | |
|----------------------|---|
| Quantity: | 100 µL |
| Target: | CTBP1 |
| Binding Specificity: | Center |
| Reactivity: | Human |
| Host: | Rabbit |
| Clonality: | Polyclonal |
| Conjugate: | This CTBP1 antibody is un-conjugated |
| Application: | Western Blotting (WB), Immunofluorescence (IF), Immunocytochemistry (ICC) |

Product Details

| | |
|-----------------------------|---|
| Immunogen: | Recombinant protein encompassing a sequence within the center region of human CtBP1. The exact sequence is proprietary. |
| Isotype: | IgG |
| Cross-Reactivity: | Mouse (Murine), Rat (Rattus), Rhesus Monkey |
| Cross-Reactivity (Details): | Mouse (100 %), Rat (100 %), Rhesus Monkey (100 %) |
| Characteristics: | Rabbit polyclonal antibody to CtBP1 (C-terminal binding protein 1) CtBP1 antibody [N3C3] |
| Purification: | Purified by antigen-affinity chromatography. |

Target Details

| | |
|-------------------|---|
| Target: | CTBP1 |
| Alternative Name: | CtBP1 (CTBP1 Products) |
| Background: | <p>This gene encodes a protein that binds to the C-terminus of adenovirus E1A proteins. This phosphoprotein is a transcriptional repressor and may play a role during cellular proliferation. This protein and the product of a second closely related gene, CTBP2, can dimerize. Both proteins can also interact with a polycomb group protein complex which participates in regulation of gene expression during development. Alternative splicing of transcripts from this gene results in multiple transcript variants.</p> <p>Cellular Localization: Cytoplasm , Nucleus</p> |
| Molecular Weight: | 48 kDa |
| Gene ID: | 1487 |
| Pathways: | Retinoic Acid Receptor Signaling Pathway |

Application Details

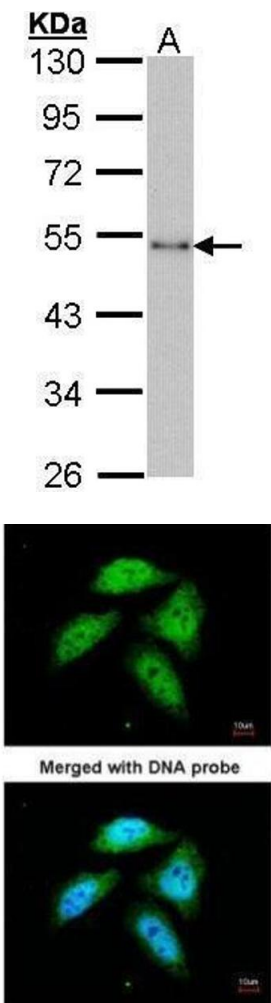
| | |
|--------------------|--|
| Application Notes: | Suggested dilution Reference ICC/IF 1:100-1:1000* Western blot 1:500-1:3000* Not tested in other applications. *Optimal dilutions/concentrations should be determined by the researcher.Suggested dilutionReferenceICC/IF1:100-1:1000* Western blot1:500-1:3000* |
| Comment: | Positive Control: HeLa , Molt-4 |
| Restrictions: | For Research Use only |

Handling

| | |
|--------------------|--|
| Format: | Liquid |
| Concentration: | 0.39 mg/mL |
| Buffer: | 0.1M Tris, 0.1M Glycine, 10 % Glycerol (pH 7). 0.01 % Thimerosal was added as a preservative. |
| Preservative: | Thimerosal (Merthiolate) |
| Precaution of Use: | This product contains Thimerosal (Merthiolate): a POISONOUS AND HAZARDOUS SUBSTANCE which should be handled by trained staff only. |
| Storage: | -20 °C |
| Storage Comment: | Keep as concentrated solution. Aliquot and store at -20°C or below. Avoid multiple freeze-thaw |

cycles.

Validation report #104342 for Multiplex Immunohistochemistry (mIHC)



Western Blotting

Image 1. WB Image Sample (30 ug of whole cell lysate) A: HeLa 10% SDS PAGE antibody diluted at 1:1000

Immunofluorescence

Image 2. ICC/IF Image Immunofluorescence analysis of paraformaldehyde-fixed HeLa, using CtBP1, antibody at 1:200 dilution.