

Datasheet for ABIN2855166

anti-FEN1 antibody**6** Images[Go to Product page](#)

Overview

Quantity:	100 µL
Target:	FEN1
Reactivity:	Human
Host:	Rabbit
Clonality:	Polyclonal
Conjugate:	This FEN1 antibody is un-conjugated
Application:	Western Blotting (WB), Immunohistochemistry (IHC), Immunofluorescence (IF), Immunoprecipitation (IP), Immunohistochemistry (Paraffin-embedded Sections) (IHC (p)), Immunocytochemistry (ICC), Proximity Ligation Assay (PLA)

Product Details

Immunogen:	Recombinant protein encompassing a sequence within the center region of human FEN1. The exact sequence is proprietary.
Isotype:	IgG
Cross-Reactivity:	Human, Mouse, Rat
Characteristics:	Rabbit Polyclonal antibody to FEN1 (flap structure-specific endonuclease 1) FEN1 antibody
Purification:	Purified by antigen-affinity chromatography.

Target Details

Target:	FEN1
---------	------

Target Details

Alternative Name:	flap structure-specific endonuclease 1 (FEN1 Products)
Background:	<p>The protein encoded by this gene removes 5' overhanging flaps in DNA repair and processes the 5' ends of Okazaki fragments in lagging strand DNA synthesis. Direct physical interaction between this protein and AP endonuclease 1 during long-patch base excision repair provides coordinated loading of the proteins onto the substrate, thus passing the substrate from one enzyme to another. The protein is a member of the XPG/RAD2 endonuclease family and is one of ten proteins essential for cell-free DNA replication. DNA secondary structure can inhibit flap processing at certain trinucleotide repeats in a length-dependent manner by concealing the 5' end of the flap that is necessary for both binding and cleavage by the protein encoded by this gene. Therefore, secondary structure can deter the protective function of this protein, leading to site-specific trinucleotide expansions.</p> <p>Cellular Localization: Nucleus</p>
Molecular Weight:	43 kDa
Gene ID:	2237
UniProt:	P39748
Pathways:	Telomere Maintenance , DNA Damage Repair , DNA Replication , Synthesis of DNA

Application Details

Application Notes:	WB: 1:500-1:3000. ICC/IF: 1:100-1:1000. IHC-P: 1:100-1:1000. IP: 1:100-1:500. Optimal dilutions/concentrations should be determined by the researcher. Not tested in other applications.
Comment:	Positive Control: NIH-3T3 , JC , BCL-1 , Raw264.7 , PC-12
Restrictions:	For Research Use only

Handling

Format:	Liquid
Concentration:	0.2 mg/mL
Buffer:	1XPBS pH 7, 20 % Glycerol, 0.025 % ProClin 300
Preservative:	ProClin
Precaution of Use:	This product contains ProClin: a POISONOUS AND HAZARDOUS SUBSTANCE which should be

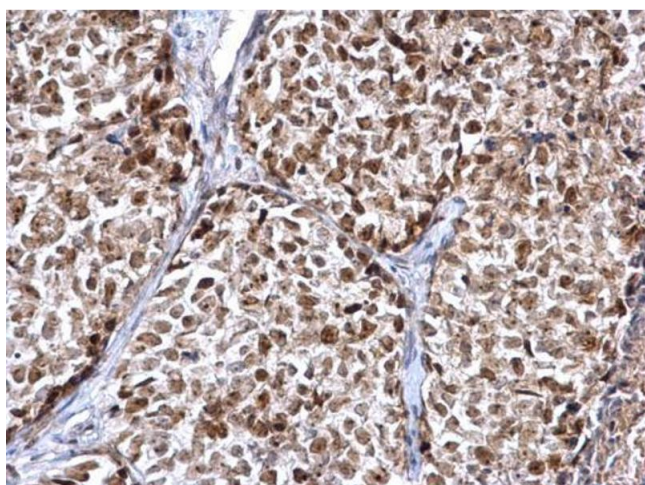
Handling

handled by trained staff only.

Storage: 4 °C, -20 °C

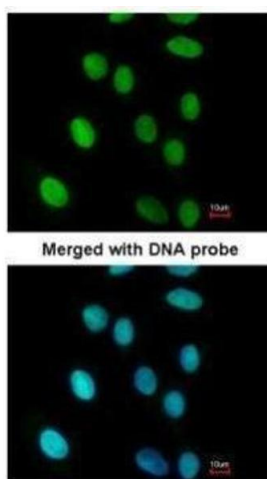
Storage Comment: Store as concentrated solution. Centrifuge briefly prior to opening vial. For short-term storage (1-2 weeks), store at 4°C. For long-term storage, aliquot and store at -20°C or below. Avoid multiple freeze-thaw cycles.

Images



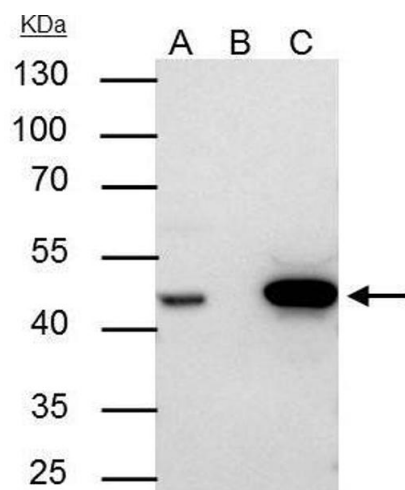
Immunohistochemistry

Image 1. IHC-P Image FEN1 antibody detects FEN1 protein at nucleus on human breast carcinoma by immunohistochemical analysis. Sample: Paraffin-embedded human breast carcinoma. FEN1 antibody , diluted at 1:500.



Immunofluorescence

Image 2. ICC/IF Image Immunofluorescence analysis of paraformaldehyde-fixed A549, using FEN1, antibody at 1:200 dilution.



Immunoprecipitation

Image 3. IP Image FEN1 antibody immunoprecipitates FEN1 protein in IP experiments. IP samples: Jurkat whole cell extract A. 30 µg Jurkat whole cell extract B. Control with 4 µg of preimmune Rabbit IgG C. Immunoprecipitation of FEN1 protein by 4 µg FEN1 antibody, 10 % SDS-PAGE The immunoprecipitated FEN1 protein was detected by FEN1 antibody, diluted at 1:500. [EasyBlot anti-rabbit IgG was used as a secondary reagent]

Please check the [product details page](#) for more images. Overall 6 images are available for ABIN2855166.