

Datasheet for ABIN2855174

anti-Actin, gamma 1 antibody (N-Term)

8 Images

3 Publications

[Go to Product page](#)

Overview

Quantity:	100 µL
Target:	Actin, gamma 1 (ACTG1)
Binding Specificity:	N-Term
Reactivity:	Human
Host:	Rabbit
Clonality:	Polyclonal
Conjugate:	This Actin, gamma 1 antibody is un-conjugated
Application:	Western Blotting (WB), Immunohistochemistry (Paraffin-embedded Sections) (IHC (p)), Immunohistochemistry (Frozen Sections) (IHC (fro))

Product Details

Immunogen:	Recombinant protein encompassing a sequence within the N-terminus region of human Actin Gamma 1. The exact sequence is proprietary.
Isotype:	IgG
Cross-Reactivity:	Cat, Dog, Human, Mouse, Rat
Characteristics:	Rabbit Polyclonal antibody to alpha Sarcomeric Actin (actin, cytoplasmic 2) alpha Sarcomeric Actin antibody
Purification:	Purified by antigen-affinity chromatography.

Target Details

Target:	Actin, gamma 1 (ACTG1)
---------	------------------------

Target Details

Alternative Name:	actin gamma 1 (ACTG1 Products)
Background:	<p>Actins are highly conserved proteins that are involved in various types of cell motility, and maintenance of the cytoskeleton. In vertebrates, three main groups of actin isoforms, alpha, beta and gamma have been identified. The alpha actins are found in muscle tissues and are a major constituent of the contractile apparatus. The beta and gamma actins co-exist in most cell types as components of the cytoskeleton, and as mediators of internal cell motility. Actin, gamma 1, encoded by this gene, is a cytoplasmic actin found in nonmuscle cells.</p> <p>Cellular Localization: Cytoplasm , cytoskeleton</p>
Molecular Weight:	42 kDa
Gene ID:	71
UniProt:	P63261
Pathways:	Myometrial Relaxation and Contraction , Cell-Cell Junction Organization

Application Details

Application Notes:	WB: 1:500-1:3000. IHC-P: 1:100-1:1000. Optimal dilutions/concentrations should be determined by the researcher. Not tested in other applications.
Comment:	Positive Control: NIH-3T3 , JC , BCL-1 , A431 , PC-12 , Rat2
Restrictions:	For Research Use only

Handling

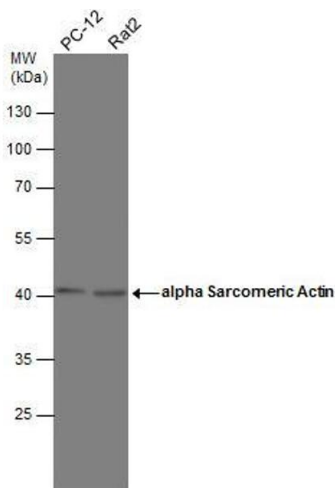
Format:	Liquid
Concentration:	0.2 mg/mL
Buffer:	1XPBS (pH 7), 10 % Glycerol, 0.01 % Thimerosal
Preservative:	Thimerosal (Merthiolate)
Precaution of Use:	This product contains Thimerosal (Merthiolate): a POISONOUS AND HAZARDOUS SUBSTANCE which should be handled by trained staff only.
Storage:	4 °C, -20 °C
Storage Comment:	Store as concentrated solution. Centrifuge briefly prior to opening vial. For short-term storage (1-2 weeks), store at 4°C. For long-term storage, aliquot and store at -20°C or below. Avoid

multiple freeze-thaw cycles.

Publications

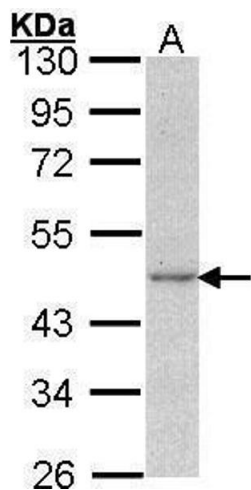
Product cited in: Yang, Chien, Lai, Su, Jan, Hsiao, Chen: "Monoamine Oxidase B Expression Correlates with a Poor Prognosis in Colorectal Cancer Patients and Is Significantly Associated with Epithelial-to-Mesenchymal Transition-Related Gene Signatures." in: **International journal of molecular sciences**, Vol. 21, Issue 8, (2020) ([PubMed](#)).

Images



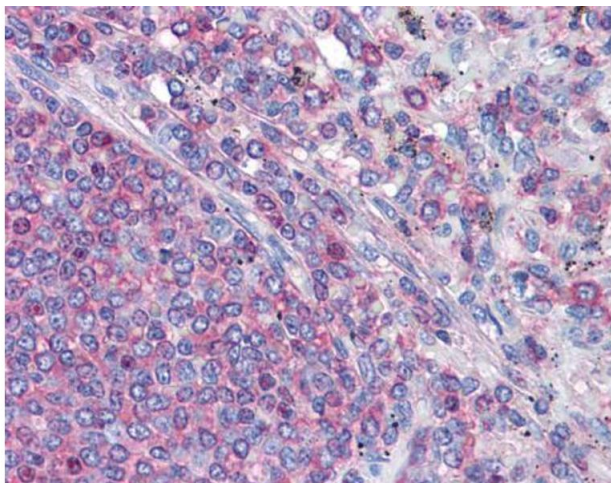
Western Blotting

Image 1. WB Image Various whole cell extracts (30 µg) were separated by 10% SDS-PAGE, and the membrane was blotted with alpha Sarcomeric Actin antibody , diluted at 1:1000.



Western Blotting

Image 2. WB Image Sample (30 ug of whole cell lysate) A: A431 , 10% SDS PAGE antibody diluted at 1:1000



Immunohistochemistry

Image 3. IHC-P Image Immunohistochemical analysis of paraffin-embedded human Spleen, using gamma Actin, antibody(10 µg/ml).

Please check the [product details page](#) for more images. Overall 8 images are available for ABIN2855174.