

Datasheet for ABIN2855176

anti-ENO1 antibody

5 Images

[Go to Product page](#)

Overview

Quantity:	100 µL
Target:	ENO1
Reactivity:	Human
Host:	Rabbit
Clonality:	Polyclonal
Conjugate:	This ENO1 antibody is un-conjugated
Application:	Western Blotting (WB), Immunofluorescence (IF), Immunocytochemistry (ICC), Immunohistochemistry (Paraffin-embedded Sections) (IHC (p)), Dot Blot (DB), Immunohistochemistry (Whole Mount) (IHC (wm))

Product Details

Immunogen:	Recombinant protein encompassing a sequence within the center region of human ENO1. The exact sequence is proprietary.
Isotype:	IgG
Cross-Reactivity:	Human, Mouse, Rat, Zebrafish (Danio rerio)
Characteristics:	Rabbit Polyclonal antibody to ENO1 (enolase 1, (alpha)) ENO1 antibody [N3C3]
Purification:	Purified by antigen-affinity chromatography.
Grade:	KO Validated

Target Details

Target:	ENO1
Alternative Name:	enolase 1 (ENO1 Products)
Background:	<p>This gene encodes one of three enolase isoenzymes found in mammals, it encodes alpha-enolase, a homodimeric soluble enzyme, and also encodes a shorter monomeric structural lens protein, tau-crystallin. The two proteins are made from the same message. The full length protein, the isoenzyme, is found in the cytoplasm. The shorter protein is produced from an alternative translation start, is localized to the nucleus, and has been found to bind to an element in the c-myc promoter. A pseudogene has been identified that is located on the other arm of the same chromosome.</p> <p>Cellular Localization: Cytoplasm , Cell membrane , myofibril , sarcomere , M-band , Isoform MBP-1: Nucleus</p>
Molecular Weight:	47 kDa
Gene ID:	2023
UniProt:	P06733

Application Details

Application Notes:	WB: 1:500-1:20000. ICC/IF: 1:100-1:1000. IHC-P: 1:100-1:1000. Optimal dilutions/concentrations should be determined by the researcher. Not tested in other applications.
Comment:	Positive Control: Mouse brain , A431 , H1299 , 293T Validation: KO/KD
Restrictions:	For Research Use only

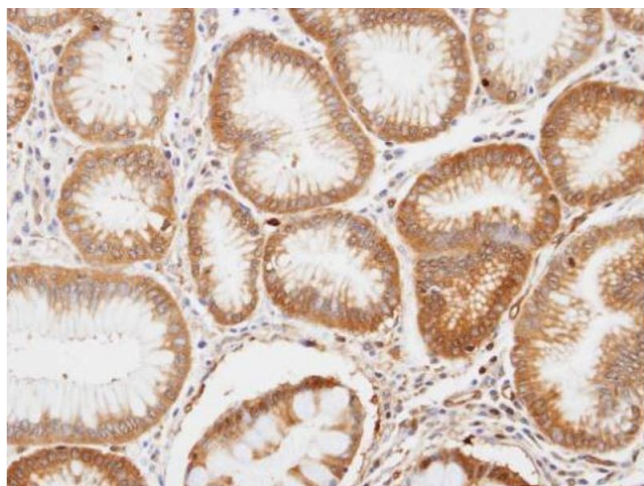
Handling

Format:	Liquid
Concentration:	1 mg/mL
Buffer:	0.1M Tris-Glycine (pH 7), 10 % Glycerol, 0.01 % Thimerosal
Preservative:	Thimerosal (Merthiolate)
Precaution of Use:	This product contains Thimerosal (Merthiolate): a POISONOUS AND HAZARDOUS SUBSTANCE which should be handled by trained staff only.
Storage:	4 °C,-20 °C

Handling

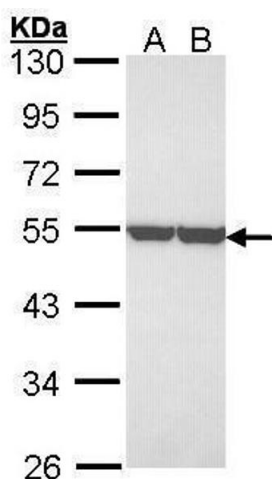
Storage Comment: Store as concentrated solution. Centrifuge briefly prior to opening vial. For short-term storage (1-2 weeks), store at 4°C. For long-term storage, aliquot and store at -20°C or below. Avoid multiple freeze-thaw cycles.

Images



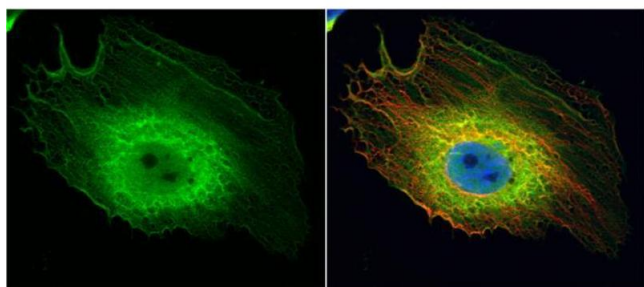
Immunohistochemistry

Image 1. IHC-P Image Immunohistochemical analysis of paraffin-embedded human gastric tissue, using ENO1, antibody at 1:100 dilution.



Western Blotting

Image 2. WB Image Sample (30 ug of whole cell lysate) A: A431, B: H1299 10% SDS PAGE antibody diluted at 1:3000



Immunofluorescence

Image 3. ICC/IF Image ENO1 antibody [N3C3] detects ENO1 protein at cytoplasm by immunofluorescent analysis. Sample: HeLa cells were fixed in 4% paraformaldehyde at RT for 15 min. Green: ENO1 protein stained by ENO1 antibody [N3C3], diluted at 1:200. Red: alpha Tubulin, a cytoskeleton marker, stained by alpha Tubulin antibody [B-5-1-2], diluted at 1:10000. Blue: Hoechst 33342 staining.

Please check the [product details page](#) for more images. Overall 5 images are available for ABIN2855176.