

Datasheet for ABIN2855177  
**anti-EPB41L3 antibody (C-Term)**

## 3 Images

[Go to Product page](#)

## Overview

Quantity:	100 µL
Target:	EPB41L3
Binding Specificity:	C-Term
Reactivity:	Human
Host:	Rabbit
Clonality:	Polyclonal
Conjugate:	This EPB41L3 antibody is un-conjugated
Application:	Western Blotting (WB), Immunofluorescence (IF), Immunocytochemistry (ICC), Immunohistochemistry (Paraffin-embedded Sections) (IHC (p))

## Product Details

Immunogen:	Recombinant protein encompassing a sequence within the C-terminus region of human EPB41L3. The exact sequence is proprietary.
Isotype:	IgG
Cross-Reactivity:	Human
Characteristics:	Rabbit Polyclonal antibody to EPB41L3 (erythrocyte membrane protein band 4.1-like 3) EPB41L3 antibody [C3], C-term
Purification:	Purified by antigen-affinity chromatography.

## Target Details

Target:	EPB41L3
---------	---------

### Target Details

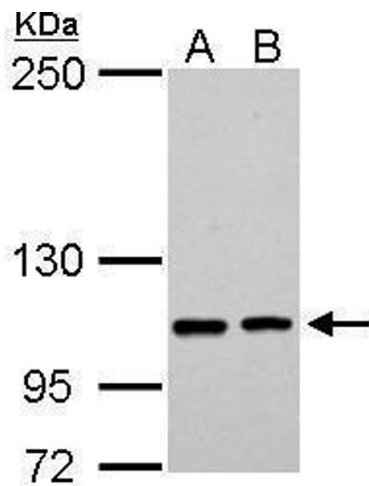
Alternative Name:	erythrocyte membrane protein band 4.1 like 3 ( <a href="#">EPB41L3 Products</a> )
Background:	Critical growth regulator in the pathogenesis of meningiomas.  Cellular Localization: Cytoplasm , cytoskeleton
Molecular Weight:	121 kDa
Gene ID:	23136
UniProt:	<a href="#">Q9Y2J2</a>
Pathways:	<a href="#">Cell-Cell Junction Organization</a> , <a href="#">Maintenance of Protein Location</a>

### Application Details

Application Notes:	WB: 1:500-1:3000. ICC/IF: 1:100-1:1000. IHC-P: 1:100-1:1000. Optimal dilutions/concentrations should be determined by the researcher. Not tested in other applications.
Restrictions:	For Research Use only

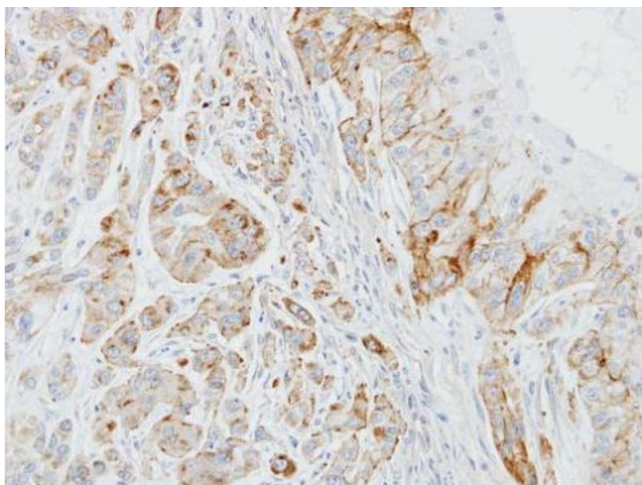
### Handling

Format:	Liquid
Concentration:	0.97 mg/mL
Buffer:	1XPBS pH 7, 20 % Glycerol, 0.025 % ProClin 300
Preservative:	ProClin
Precaution of Use:	This product contains ProClin: a POISONOUS AND HAZARDOUS SUBSTANCE which should be handled by trained staff only.
Storage:	4 °C,-20 °C
Storage Comment:	Store as concentrated solution. Centrifuge briefly prior to opening vial. For short-term storage (1-2 weeks), store at 4°C. For long-term storage, aliquot and store at -20°C or below. Avoid multiple freeze-thaw cycles.



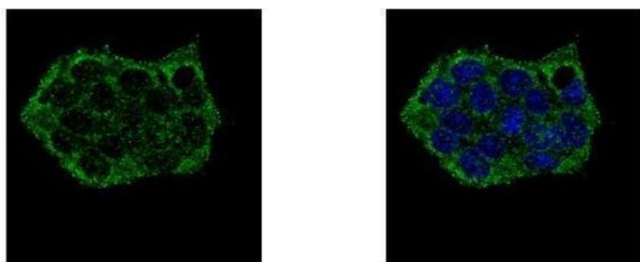
#### Western Blotting

**Image 1.** WB Image EPB41L3 antibody [C3], C-term detects EPB41L3 protein by Western blot analysis. A. 30 µg PC-3 whole cell lysate/extract B. 30 µg U87-MG whole cell lysate/extract 5 % SDS-PAGE EPB41L3 antibody [C3], C-term , dilution: 1:1000



#### Immunohistochemistry

**Image 2.** IHC-P Image Immunohistochemical analysis of paraffin-embedded A549 xenograft, using EPB41L3, antibody at 1:100 dilution.



#### Immunofluorescence

**Image 3.** ICC/IF Image EPB41L3 antibody [C3], C-term detects EPB41L3 protein at cytoplasm by confocal immunofluorescent analysis. Sample: HepG2 cells were fixed in ice-cold MeOH for 5 min. Green: EPB41L3 protein stained by EPB41L3 antibody [C3], C-term , diluted at 1:500. Blue: Hoechst 33342 staining. [Images captured by Olympus FV10i Confocal Laser Scanning Microscope]