

Datasheet for ABIN2855178
anti-ERH antibody (Center)[Go to Product page](#)

4 Images

Overview

Quantity:	100 µL
Target:	ERH
Binding Specificity:	Center
Reactivity:	Human, Mouse
Host:	Rabbit
Clonality:	Polyclonal
Conjugate:	This ERH antibody is un-conjugated
Application:	Western Blotting (WB), Immunohistochemistry (Paraffin-embedded Sections) (IHC (p))

Product Details

Immunogen:	Recombinant protein encompassing a sequence within the center region of human ERH. The exact sequence is proprietary.
Isotype:	IgG
Cross-Reactivity:	Rat (Rattus), Pig (Porcine), Rhesus Monkey, Cow (Bovine)
Cross-Reactivity (Details):	Rat (100 %), Pig (100 %), Rhesus Monkey (100 %), Bovine (100 %)
Characteristics:	Rabbit Polyclonal antibody to ERH (enhancer of rudimentary homolog (Drosophila)) ERH antibody
Purification:	Purified by antigen-affinity chromatography.

Target Details

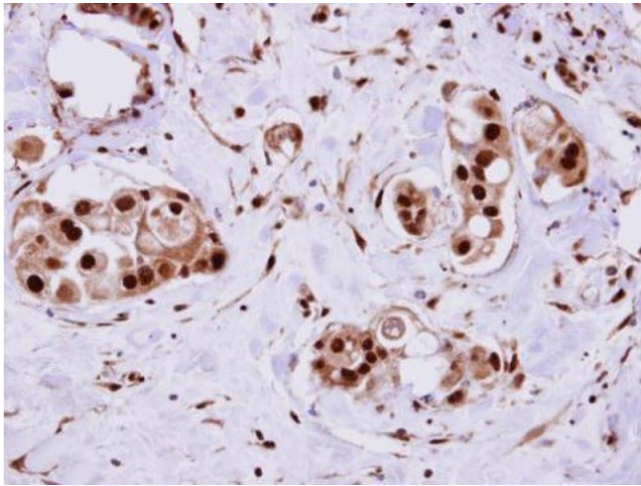
Target:	ERH
Alternative Name:	ERH (ERH Products)
Background:	May have a role in the cell cycle.
Molecular Weight:	12 kDa
Gene ID:	2079

Application Details

Application Notes:	Suggested dilution Reference IHC (Formalin-fixed paraffin-embedded sections) 1:100-1:1000* Western blot 1:500-1:3000* Not tested in other applications. *Optimal dilutions/concentrations should be determined by the researcher.Suggested dilutionReferenceIHC (Formalin-fixed paraffin-embedded sections)1:100-1:1000* Western blot1:500-1:3000*
Comment:	Positive Control: A549 , H1299 , HCT116 , mouse brain
Restrictions:	For Research Use only

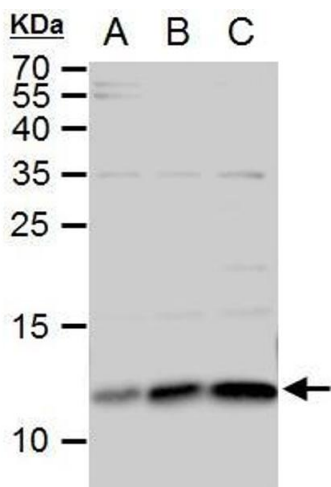
Handling

Format:	Liquid
Concentration:	0.79 mg/mL
Buffer:	0.1M Tris, 0.1M Glycine, 10 % Glycerol (pH 7). 0.01 % Thimerosal was added as a preservative.
Preservative:	Thimerosal (Merthiolate)
Precaution of Use:	This product contains Thimerosal (Merthiolate): a POISONOUS AND HAZARDOUS SUBSTANCE which should be handled by trained staff only.
Storage:	-20 °C
Storage Comment:	Keep as concentrated solution. Aliquot and store at -20°C or below. Avoid multiple freeze-thaw cycles.



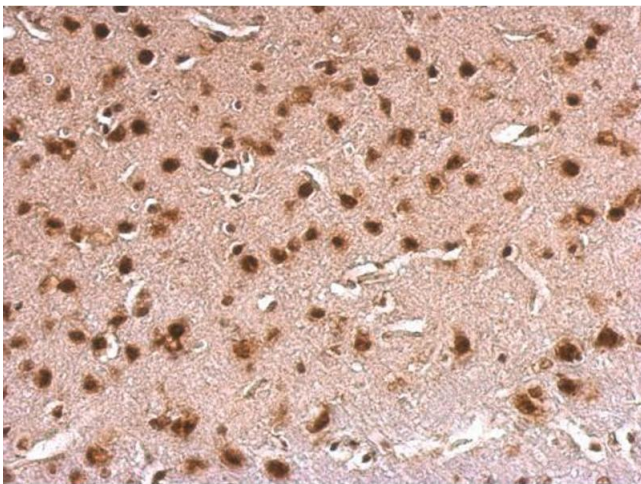
Immunohistochemistry

Image 1. IHC-P Image ERH antibody detects ERH protein at cytosol on human breast cancer by immunohistochemical analysis. Sample: Paraffin-embedded breast cancer. ERH antibody , dilution: 1:500.



Western Blotting

Image 2. WB Image ERH antibody detects ERH protein by western blot analysis. A. 30 µg A549 whole cell extract B. 30 µg H1299 whole cell extract C. 30 µg HCT116 whole cell extract 15 % SDS-PAGE ERH antibody , dilution: 1:500



Immunohistochemistry

Image 3. IHC-P Image ERH antibody detects ERH protein at nucleus on mouse fore brain by immunohistochemical analysis. Sample: Paraffin-embedded mouse fore brain. ERH antibody , dilution: 1:500.

Please check the [product details page](#) for more images. Overall 4 images are available for ABIN2855178.