

Datasheet for ABIN2855182

anti-GUK1 antibody**2** Images[Go to Product page](#)

Overview

Quantity:	100 µL
Target:	GUK1
Reactivity:	Human
Host:	Rabbit
Clonality:	Polyclonal
Conjugate:	This GUK1 antibody is un-conjugated
Application:	Western Blotting (WB), Immunohistochemistry (Paraffin-embedded Sections) (IHC (p))

Product Details

Immunogen:	Recombinant protein encompassing a sequence within the center region of human Guanylate kinase. The exact sequence is proprietary.
Isotype:	IgG
Cross-Reactivity:	Human
Characteristics:	Rabbit Polyclonal antibody to Guanylate kinase (guanylate kinase 1) Guanylate kinase antibody
Purification:	Purified by antigen-affinity chromatography.

Target Details

Target:	GUK1
Alternative Name:	guanylate kinase 1 (GUK1 Products)

Target Details

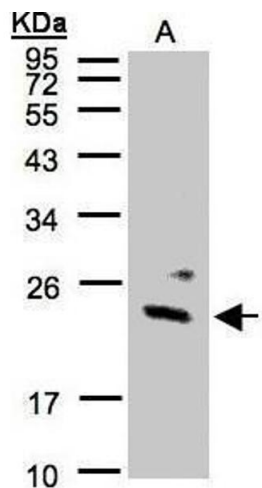
Molecular Weight:	22 kDa
Gene ID:	2987
UniProt:	Q16774
Pathways:	Nucleotide Phosphorylation , ER-Nucleus Signaling , Ribonucleoside Biosynthetic Process

Application Details

Application Notes:	WB: 1:500-1:3000. IHC-P: 1:100-1:1000. Optimal dilutions/concentrations should be determined by the researcher. Not tested in other applications.
Comment:	Positive Control: 293T
Restrictions:	For Research Use only

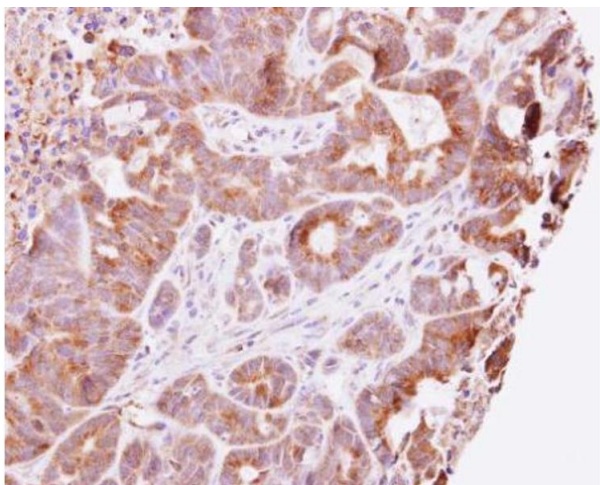
Handling

Format:	Liquid
Concentration:	1 mg/mL
Buffer:	1XPBS (pH 7), 40 % Glycerol, 0.01 % Thimerosal
Preservative:	Thimerosal (Merthiolate)
Precaution of Use:	This product contains Thimerosal (Merthiolate): a POISONOUS AND HAZARDOUS SUBSTANCE which should be handled by trained staff only.
Storage:	4 °C,-20 °C
Storage Comment:	Store as concentrated solution. Centrifuge briefly prior to opening vial. For short-term storage (1-2 weeks), store at 4°C. For long-term storage, aliquot and store at -20°C or below. Avoid multiple freeze-thaw cycles.



Western Blotting

Image 1. WB Image Sample(30 µg of whole cell lysate)
A:293T 12% SDS PAGE antibody diluted at 1:1000



Immunohistochemistry

Image 2. IHC-P Image Guanylate kinase antibody detects GUK1 protein at cytosol on CX-1 xenograft by immunohistochemical analysis. Sample: Paraffin-embedded CX-1 xenograft. Guanylate kinase antibody , dilution: 1:500.