

Datasheet for ABIN2855191

anti-RPL15 antibody**3** Images[Go to Product page](#)

Overview

Quantity:	100 µL
Target:	RPL15
Reactivity:	Human
Host:	Rabbit
Clonality:	Polyclonal
Conjugate:	This RPL15 antibody is un-conjugated
Application:	Western Blotting (WB), Immunohistochemistry (Paraffin-embedded Sections) (IHC (p))

Product Details

Immunogen:	Recombinant protein encompassing a sequence within the center region of human RPL15. The exact sequence is proprietary.
Isotype:	IgG
Cross-Reactivity:	Human
Characteristics:	Rabbit Polyclonal antibody to RPL15 (ribosomal protein L15) RPL15 antibody
Purification:	Purified by antigen-affinity chromatography.

Target Details

Target:	RPL15
Alternative Name:	ribosomal protein L15 (RPL15 Products)

Target Details

Background: Ribosomes, the organelles that catalyze protein synthesis, consist of a small 40S subunit and a large 60S subunit. Together these subunits are composed of 4 RNA species and approximately 80 structurally distinct proteins. This gene encodes a ribosomal protein that is a component of the 60S subunit. The protein belongs to the L15E family of ribosomal proteins. It is located in the cytoplasm. This gene shares sequence similarity with the yeast ribosomal protein YL10 gene. Although this gene has been referred to as RPL10, its official symbol is RPL15. This gene has been shown to be overexpressed in some esophageal tumors compared to normal matched tissues. Transcript variants utilizing alternative polyA signals exist. As is typical for genes encoding ribosomal proteins, there are multiple processed pseudogenes of this gene dispersed through the genome.

Molecular Weight: 24 kDa

Gene ID: 6138

UniProt: [P61313](#)

Application Details

Application Notes: WB: 1:500-1:3000. IHC-P: 1:100-1:1000. Optimal dilutions/concentrations should be determined by the researcher. Not tested in other applications.

Comment: Positive Control: H1299

Restrictions: For Research Use only

Handling

Format: Liquid

Concentration: 0.63 mg/mL

Buffer: 1XPBS (pH 7), 1 % BSA, 20 % Glycerol, 0.01 % Thimerosal

Preservative: Thimerosal (Merthiolate)

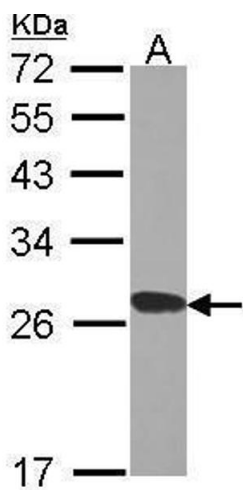
Precaution of Use: This product contains Thimerosal (Merthiolate): a POISONOUS AND HAZARDOUS SUBSTANCE which should be handled by trained staff only.

Storage: 4 °C,-20 °C

Storage Comment: Store as concentrated solution. Centrifuge briefly prior to opening vial. For short-term storage (1-2 weeks), store at 4°C. For long-term storage, aliquot and store at -20°C or below. Avoid

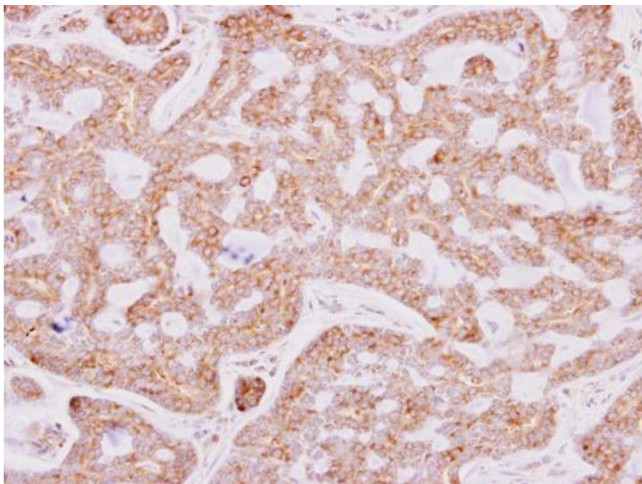
multiple freeze-thaw cycles.

Images



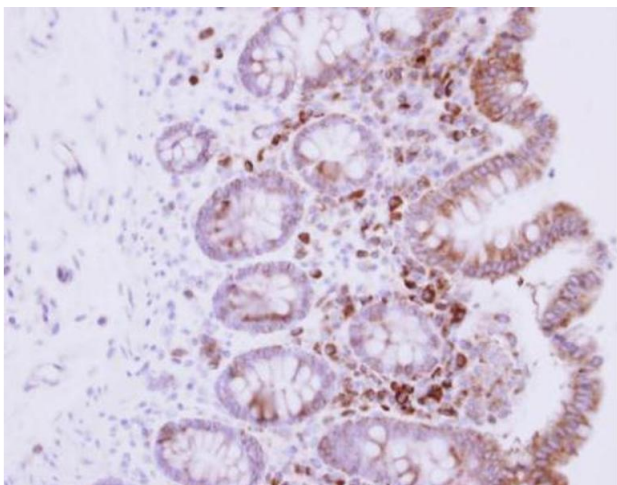
Western Blotting

Image 1. WB Image Sample (30 ug of whole cell lysate) A: H1299 12% SDS PAGE RPL15 antibody antibody diluted at 1:1000



Immunohistochemistry

Image 2. IHC-P Image RPL15 antibody detects RPL15 protein at cytosol on human breast carcinoma by immunohistochemical analysis. Sample: RPL15 antibody , dilution: 1:500.



Immunohistochemistry

Image 3. IHC-P Image Immunohistochemical analysis of paraffin-embedded human normal colon, using RPL15, antibody at 1:500 dilution.