



[Go to Product page](#)

Datasheet for ABIN2855193

anti-RPS10 antibody

5 Images

Overview

Quantity:	100 µL
Target:	RPS10
Reactivity:	Human
Host:	Rabbit
Clonality:	Polyclonal
Conjugate:	This RPS10 antibody is un-conjugated
Application:	Western Blotting (WB), Immunofluorescence (IF), Immunocytochemistry (ICC), Immunohistochemistry (Paraffin-embedded Sections) (IHC (p)), Immunohistochemistry (Whole Mount) (IHC (wm))

Product Details

Immunogen:	Recombinant protein encompassing a sequence within the center region of human RPS10. The exact sequence is proprietary.
Isotype:	IgG
Cross-Reactivity:	Human, Mouse, Zebrafish (Danio rerio)
Characteristics:	Rabbit Polyclonal antibody to RPS10 (ribosomal protein S10) RPS10 antibody
Purification:	Purified by antigen-affinity chromatography.

Target Details

Target:	RPS10
---------	-------

Target Details

Alternative Name:	ribosomal protein S10 (RPS10 Products)
Background:	<p>Ribosomes, the organelles that catalyze protein synthesis, consist of a small 40S subunit and a large 60S subunit. Together these subunits are composed of 4 RNA species and approximately 80 structurally distinct proteins. This gene encodes a ribosomal protein that is a component of the 40S subunit. The protein belongs to the S10E family of ribosomal proteins. It is located in the cytoplasm. Variable expression of this gene in colorectal cancers compared to adjacent normal tissues has been observed, although no correlation between the level of expression and the severity of the disease has been found. As is typical for genes encoding ribosomal proteins, there are multiple processed pseudogenes of this gene dispersed through the genome.</p> <p>Cellular Localization: Cytoplasm</p>
Molecular Weight:	19 kDa
Gene ID:	6204
UniProt:	P46783
Pathways:	Ribonucleoprotein Complex Subunit Organization , Ribosome Assembly

Application Details

Application Notes:	WB: 1:500-1:3000. ICC/IF: 1:100-1:1000. IHC-P: 1:100-1:1000. Optimal dilutions/concentrations should be determined by the researcher. Not tested in other applications.
Comment:	Positive Control: Mouse brain , A431
Restrictions:	For Research Use only

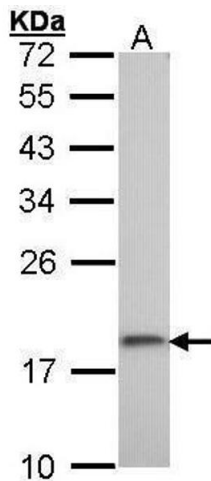
Handling

Format:	Liquid
Concentration:	0.57 mg/mL
Buffer:	0.1M Tris-Glycine (pH 7), 10 % Glycerol, 0.01 % Thimerosal
Preservative:	Thimerosal (Merthiolate)
Precaution of Use:	This product contains Thimerosal (Merthiolate): a POISONOUS AND HAZARDOUS SUBSTANCE which should be handled by trained staff only.
Storage:	4 °C,-20 °C

Handling

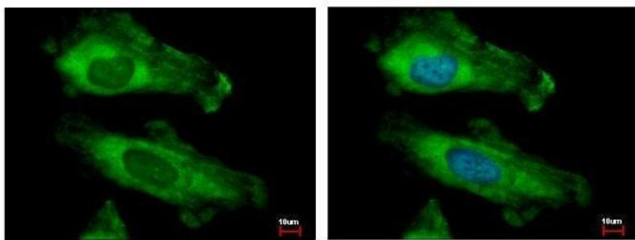
Storage Comment: Store as concentrated solution. Centrifuge briefly prior to opening vial. For short-term storage (1-2 weeks), store at 4°C. For long-term storage, aliquot and store at -20°C or below. Avoid multiple freeze-thaw cycles.

Validation report #104342 for Multiplex Immunohistochemistry (mIHC)



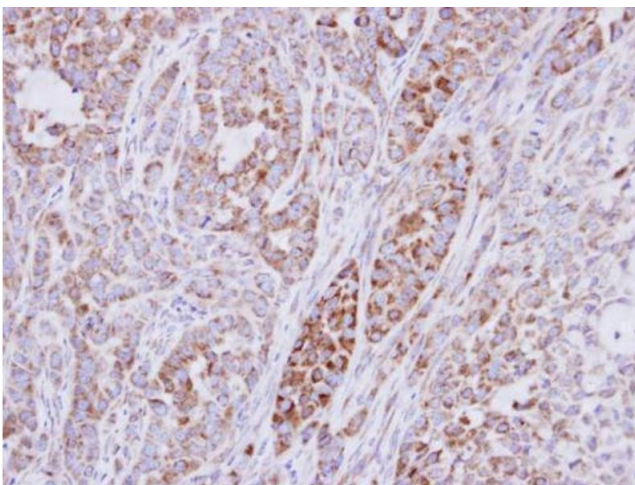
Western Blotting

Image 1. WB Image Sample (30 ug of whole cell lysate) A: A431, 12% SDS PAGE antibody diluted at 1:1000



Immunofluorescence

Image 2. ICC/IF Image RPS10 antibody detects RPS10 protein at cytoplasm by immunofluorescent analysis. Sample: HeLa cells were fixed in 4% paraformaldehyde at RT for 15 min. Green: RPS10 protein stained by RPS10 antibody, diluted at 1:500. Blue: Hoechst 33343 staining.



Immunohistochemistry

Image 3. IHC-P Image Immunohistochemical analysis of paraffin-embedded A549 xenograft, using RPS10, antibody at 1:500 dilution.

Please check the [product details page](#) for more images. Overall 5 images are available for ABIN2855193.