

Datasheet for ABIN2855195
anti-RRBP1 antibody (C-Term)

5 Images

[Go to Product page](#)

Overview

Quantity:	100 µL
Target:	RRBP1
Binding Specificity:	C-Term
Reactivity:	Human
Host:	Rabbit
Clonality:	Polyclonal
Conjugate:	This RRBP1 antibody is un-conjugated
Application:	Western Blotting (WB), Immunofluorescence (IF), Immunohistochemistry (Paraffin-embedded Sections) (IHC (p)), Immunocytochemistry (ICC)

Product Details

Immunogen:	Recombinant protein encompassing a sequence within the C-terminus region of human Ribosome binding protein 1. The exact sequence is proprietary.
Isotype:	IgG
Cross-Reactivity:	Human, Mouse
Characteristics:	Rabbit Polyclonal antibody to Ribosome binding protein 1 (ribosome binding protein 1 homolog 180 kDa (dog)) Ribosome binding protein 1 antibody [C3], C-term
Purification:	Purified by antigen-affinity chromatography.
Grade:	KO Validated

Target Details

Target:	RRBP1
Alternative Name:	ribosome binding protein 1 (RRBP1 Products)
Background:	<p>Analysis of cDNA clones indicates that ribosome binding protein 1 may exist in different forms due to removal of tandem repeats, or partial intraexonic splicing of RRBP1. The form presented here is lacking the canine p180 ribosome-binding domain, NQGKKAEGAQ, which is tandemly repeated close to the N-terminus in other forms that haven't been fully characterized. RRBP1 has been excluded as a candidate gene in the cause of Alagille syndrome. Alternate splicing results in multiple transcript variants.</p> <p>Cellular Localization: Endoplasmic reticulum membrane, Single-pass type III membrane protein</p>
Molecular Weight:	152 kDa
Gene ID:	6238
UniProt:	Q9P2E9

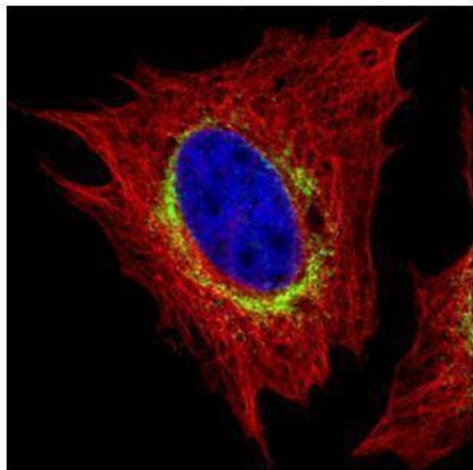
Application Details

Application Notes:	WB: 1:500-1:3000. ICC/IF: 1:100-1:1000. IHC-P: 1:100-1:1000. Optimal dilutions/concentrations should be determined by the researcher. Not tested in other applications.
Comment:	Positive Control: NIH-3T3 , HepG2 Validation: KO/KD
Restrictions:	For Research Use only

Handling

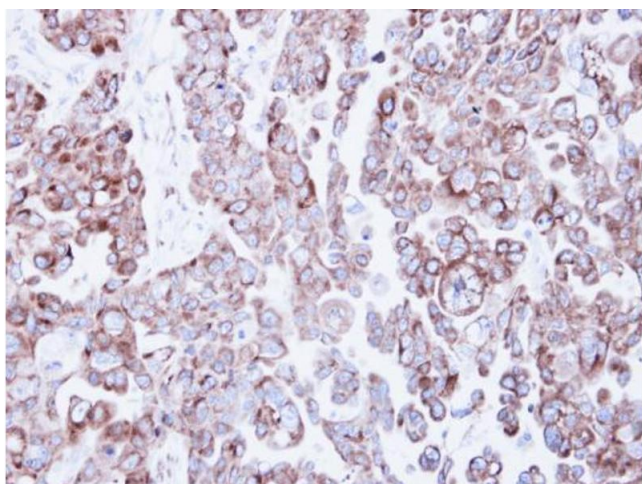
Format:	Liquid
Concentration:	1 mg/mL
Buffer:	1XPBS (pH 7), 40 % Glycerol, 0.01 % Thimerosal
Preservative:	Thimerosal (Merthiolate)
Precaution of Use:	This product contains Thimerosal (Merthiolate): a POISONOUS AND HAZARDOUS SUBSTANCE which should be handled by trained staff only.
Storage:	4 °C,-20 °C
Storage Comment:	Store as concentrated solution. Centrifuge briefly prior to opening vial. For short-term storage

(1-2 weeks), store at 4°C. For long-term storage, aliquot and store at -20°C or below. Avoid multiple freeze-thaw cycles.



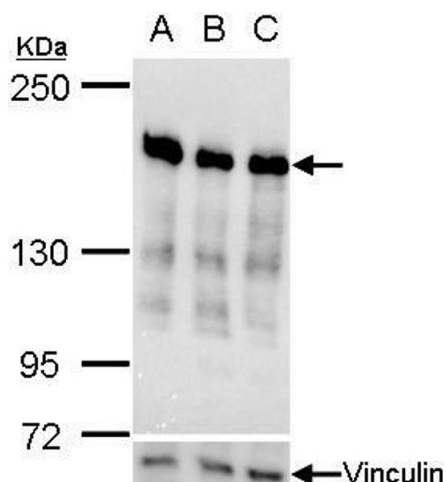
Immunofluorescence

Image 1. ICC/IF Image Confocal immunofluorescence analysis (Olympus FV10i) of paraformaldehyde-fixed HeLa, using Ribosome binding protein 1, antibody (Green) at 1:500 dilution. Alpha-tubulin filaments were labeled with (Red) at 1:500.



Immunohistochemistry

Image 2. IHC-P Image Immunohistochemical analysis of paraffin-embedded OVCAR3 xenograft, using Ribosome binding protein 1, antibody at 1:500 dilution.



Western Blotting

Image 3. WB Image Ribosome binding protein 1 antibody validation by siRNA knock-down. Upperpanel: Ribosome binding protein 1 antibody Lower panel: Vinculin antibody , A. 30 µg HepG2 whole cell lysate/extract B. 30 µg whole cell lysate/extract of RBP1 siRNA#1-transfected HepG2 cells C. 30 µg whole cell lysate/extract of RBP1 siRNA#2-transfected HepG2 cells 5 % SDS-PAGE Ribosome binding protein 1 antibody , dilution: 1:500 Vinculin antibody , dilution: 1:1000

Please check the [product details page](#) for more images. Overall 5 images are available for ABIN2855195.