



[Go to Product page](#)

Datasheet for ABIN2855196
anti-SNRPD2 antibody

7 Images

Overview

Quantity:	100 µL
Target:	SNRPD2
Reactivity:	Human
Host:	Rabbit
Clonality:	Polyclonal
Conjugate:	This SNRPD2 antibody is un-conjugated
Application:	Western Blotting (WB), Immunofluorescence (IF), Immunohistochemistry (Paraffin-embedded Sections) (IHC (p)), Immunocytochemistry (ICC)

Product Details

Immunogen:	Recombinant protein encompassing a sequence within the center region of human SNRPD2. The exact sequence is proprietary.
Isotype:	IgG
Cross-Reactivity:	Human, Mouse
Characteristics:	Rabbit Polyclonal antibody to SNRPD2 (small nuclear ribonucleoprotein D2 polypeptide 16.5 kDa) SNRPD2 antibody
Purification:	Purified by antigen-affinity chromatography.

Target Details

Target:	SNRPD2
---------	--------

Target Details

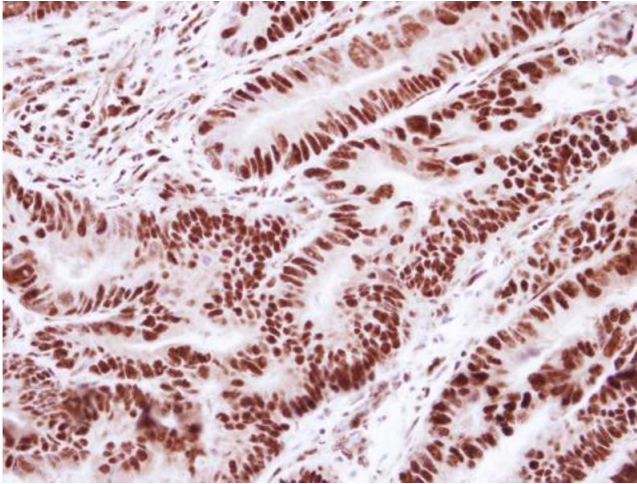
Alternative Name:	small nuclear ribonucleoprotein D2 polypeptide (SNRPD2 Products)
Background:	<p>The protein encoded by this gene belongs to the small nuclear ribonucleoprotein core protein family. It is required for pre-mRNA splicing and small nuclear ribonucleoprotein biogenesis. Alternative splicing occurs at this locus and two transcript variants encoding the same protein have been identified.</p> <p>Cellular Localization: Nucleus</p>
Molecular Weight:	14 kDa
Gene ID:	6633
UniProt:	P62316
Pathways:	Ribonucleoprotein Complex Subunit Organization

Application Details

Application Notes:	WB: 1:500-1:3000. ICC/IF: 1:100-1:2000. IHC-P: 1:100-1:1000. Optimal dilutions/concentrations should be determined by the researcher. Not tested in other applications.
Comment:	Positive Control: A549
Restrictions:	For Research Use only

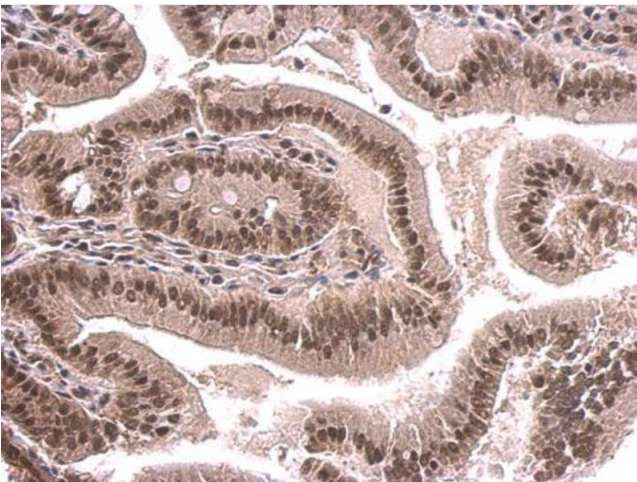
Handling

Format:	Liquid
Concentration:	0.46 mg/mL
Buffer:	1XPBS (pH 7), 1 % BSA, 20 % Glycerol, 0.01 % Thimerosal
Preservative:	Thimerosal (Merthiolate)
Precaution of Use:	This product contains Thimerosal (Merthiolate): a POISONOUS AND HAZARDOUS SUBSTANCE which should be handled by trained staff only.
Storage:	4 °C,-20 °C
Storage Comment:	Store as concentrated solution. Centrifuge briefly prior to opening vial. For short-term storage (1-2 weeks), store at 4°C. For long-term storage, aliquot and store at -20°C or below. Avoid multiple freeze-thaw cycles.



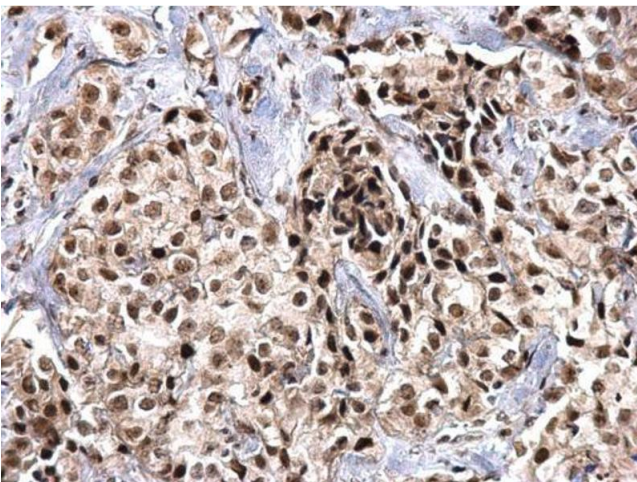
Immunohistochemistry

Image 1. IHC-P Image Immunohistochemical analysis of paraffin-embedded human colon carcinoma, using SNRPD2, antibody at 1:250 dilution.



Immunohistochemistry

Image 2. IHC-P Image SNRPD2 antibody detects SNRPD2 protein at nucleus on mouse duodenum by immunohistochemical analysis. Sample: Paraffin-embedded mouse duodenum. SNRPD2 antibody , dilution: 1:500.



Immunohistochemistry

Image 3. IHC-P Image SNRPD2 antibody detects SNRPD2 protein at nucleus on human breast carcinoma by immunohistochemical analysis. Sample: Paraffin-embedded human breast carcinoma. SNRPD2 antibody , dilution: 1:500.

Please check the [product details page](#) for more images. Overall 7 images are available for ABIN2855196.