

Datasheet for ABIN2855198
anti-ENTPD6 antibody (Center)

3 Images

[Go to Product page](#)

Overview

Quantity:	100 µL
Target:	ENTPD6
Binding Specificity:	Center
Reactivity:	Human, Mouse
Host:	Rabbit
Clonality:	Polyclonal
Conjugate:	This ENTPD6 antibody is un-conjugated
Application:	Western Blotting (WB), Immunohistochemistry (Paraffin-embedded Sections) (IHC (p))

Product Details

Immunogen:	Recombinant protein encompassing a sequence within the center region of human ENTPD6. The exact sequence is proprietary.
Isotype:	IgG
Cross-Reactivity:	Cow (Bovine), Rat (Rattus)
Cross-Reactivity (Details):	Rat (93 %), Bovine (89 %)
Characteristics:	Rabbit Polyclonal antibody to ENTPD6 (ectonucleoside triphosphate diphosphohydrolase 6 (putative function)) ENTPD6 antibody [N1C1]
Purification:	Purified by antigen-affinity chromatography.

Target Details

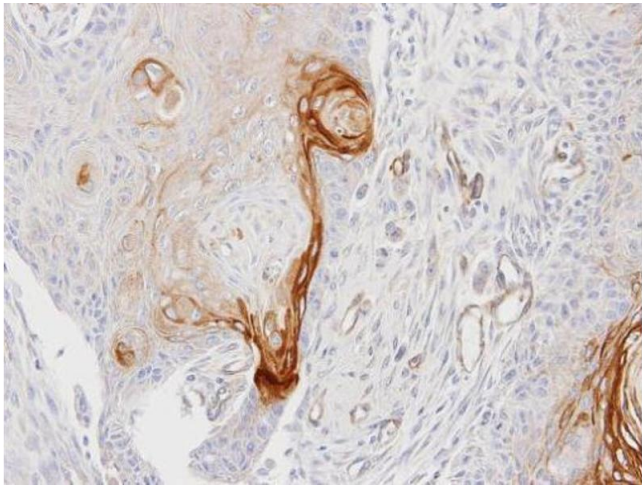
Target:	ENTPD6
Alternative Name:	ENTPD6 (ENTPD6 Products)
Background:	<p>ENTPD6 is similar to E-type nucleotidases (NTPases). NTPases, such as CD39, mediate catabolism of extracellular nucleotides. ENTPD6 contains 4 apyrase-conserved regions which is characteristic of NTPases. Alternatively spliced transcript variants encoding different isoforms have been found for this gene.</p> <p>Cellular Localization: Golgi apparatus membrane, Single-pass type II membrane protein , Secreted</p>
Molecular Weight:	53 kDa
Gene ID:	955

Application Details

Application Notes:	<p>Suggested dilution Reference IHC (Formalin-fixed paraffin-embedded sections) 1:100-1:1000* Western blot 1:500-1:3000* Not tested in other applications. *Optimal dilutions/concentrations should be determined by the researcher.Suggested dilutionReferenceIHC (Formalin-fixed paraffin-embedded sections)1:100-1:1000* Western blot1:500-1:3000*</p>
Comment:	Positive Control: H1299
Restrictions:	For Research Use only

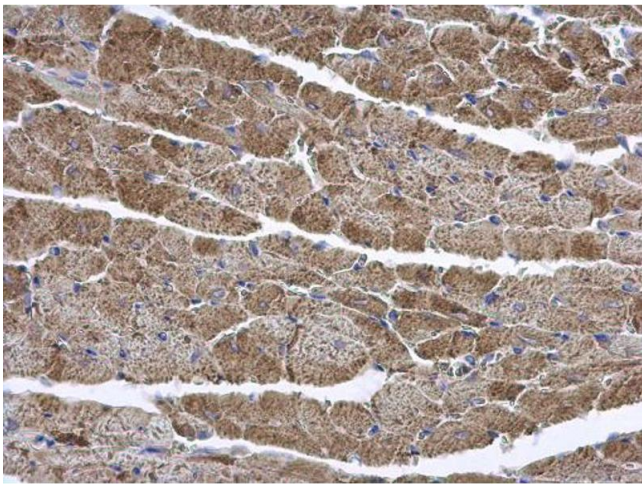
Handling

Format:	Liquid
Concentration:	1 mg/mL
Buffer:	0.1M Tris, 0.1M Glycine, 10 % Glycerol (pH 7). 0.01 % Thimerosal was added as a preservative.
Preservative:	Thimerosal (Merthiolate)
Precaution of Use:	This product contains Thimerosal (Merthiolate): a POISONOUS AND HAZARDOUS SUBSTANCE which should be handled by trained staff only.
Storage:	-20 °C
Storage Comment:	Keep as concentrated solution. Aliquot and store at -20°C or below. Avoid multiple freeze-thaw cycles.



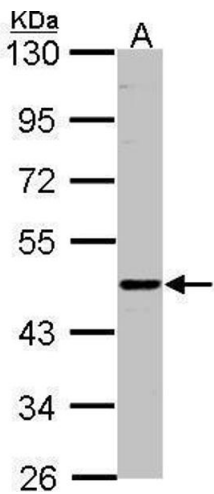
Immunohistochemistry

Image 1. IHC-P Image Immunohistochemical analysis of paraffin-embedded Ca922 xenograft, using ENTPD6, antibody at 1:100 dilution.



Immunohistochemistry

Image 2. IHC-P Image ENTPD6 antibody [N1C1] detects ENTPD6 protein at cytoplasm on mouse heart by immunohistochemical analysis. Sample: Paraffin-embedded mouse heart. ENTPD6 antibody [N1C1] , diluted at 1:500.



Western Blotting

Image 3. WB Image Sample(30 µg of whole cell lysate) A:H1299 7.5% SDS PAGE antibody diluted at 1:500