

Datasheet for ABIN2855200

anti-RPL3 antibody**3** Images[Go to Product page](#)

Overview

Quantity:	100 µL
Target:	RPL3
Reactivity:	Human
Host:	Rabbit
Clonality:	Polyclonal
Conjugate:	This RPL3 antibody is un-conjugated
Application:	Western Blotting (WB), Immunohistochemistry (Paraffin-embedded Sections) (IHC (p)), Immunofluorescence (IF), Immunocytochemistry (ICC)

Product Details

Immunogen:	Recombinant protein encompassing a sequence within the center region of human RPL3. The exact sequence is proprietary.
Isotype:	IgG
Cross-Reactivity:	Human
Characteristics:	Rabbit Polyclonal antibody to RPL3 (ribosomal protein L3) RPL3 antibody [N1N3]
Purification:	Purified by antigen-affinity chromatography.

Target Details

Target:	RPL3
Alternative Name:	ribosomal protein L3 (RPL3 Products)

Target Details

Background: Ribosomes, the complexes that catalyze protein synthesis, consist of a small 40S subunit and a large 60S subunit. Together these subunits are composed of 4 RNA species and approximately 80 structurally distinct proteins. This gene encodes a ribosomal protein that is a component of the 60S subunit. The protein belongs to the L3P family of ribosomal proteins and it is located in the cytoplasm. The protein can bind to the HIV-1 TAR mRNA, and it has been suggested that the protein contributes to tat-mediated transactivation. This gene is co-transcribed with several small nucleolar RNA genes, which are located in several of this gene's introns. Alternate transcriptional splice variants, encoding different isoforms, have been characterized. As is typical for genes encoding ribosomal proteins, there are multiple processed pseudogenes of this gene dispersed through the genome.

Cellular Localization: Cytoplasm

Molecular Weight: 46 kDa

Gene ID: 6122

UniProt: [P39023](#)

Application Details

Application Notes: WB: 1:500-1:3000. ICC/IF: 1:100-1:1000. IHC-P: 1:100-1:1000. Optimal dilutions/concentrations should be determined by the researcher. Not tested in other applications.

Comment: Positive Control: A549

Restrictions: For Research Use only

Handling

Format: Liquid

Concentration: 0.57 mg/mL

Buffer: 0.1M Tris-Glycine (pH 7), 20 % Glycerol, 0.01 % Thimerosal

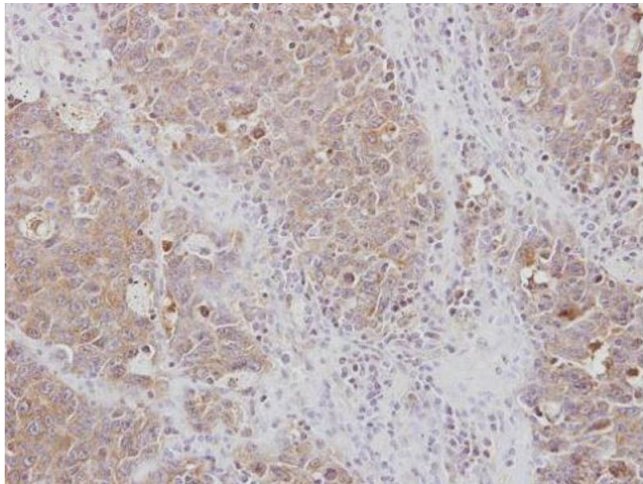
Preservative: Thimerosal (Merthiolate)

Precaution of Use: This product contains Thimerosal (Merthiolate): a POISONOUS AND HAZARDOUS SUBSTANCE which should be handled by trained staff only.

Storage: 4 °C,-20 °C

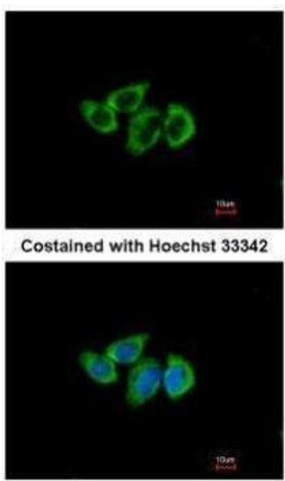
Storage Comment: Store as concentrated solution. Centrifuge briefly prior to opening vial. For short-term storage

(1-2 weeks), store at 4°C. For long-term storage, aliquot and store at -20°C or below. Avoid multiple freeze-thaw cycles.



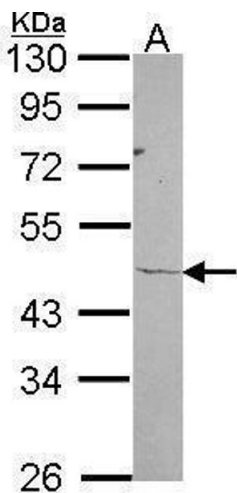
Immunohistochemistry

Image 1. IHC-P Image Immunohistochemical analysis of paraffin-embedded AdCA xenograft, using RPL3, antibody at 1:100 dilution.



Immunofluorescence

Image 2. ICC/IF Image Immunofluorescence analysis of methanol-fixed A549, using RPL3, antibody at 1:500 dilution.



Western Blotting

Image 3. WB Image Sample (30 ug of whole cell lysate) A: A549 10% SDS PAGE ribosomal protein L3 antibody antibody diluted at 1:1000