



[Go to Product page](#)

Datasheet for ABIN2855203

anti-UQCRC1 antibody

4 Images

Overview

Quantity:	100 µL
Target:	UQCRC1
Reactivity:	Human
Host:	Rabbit
Clonality:	Polyclonal
Conjugate:	This UQCRC1 antibody is un-conjugated
Application:	Western Blotting (WB), Immunohistochemistry (Paraffin-embedded Sections) (IHC (p))

Product Details

Immunogen:	Recombinant protein encompassing a sequence within the center region of human UQCRC1. The exact sequence is proprietary.
Isotype:	IgG
Cross-Reactivity:	Human, Mouse
Characteristics:	Rabbit Polyclonal antibody to UQCRC1 (ubiquinol-cytochrome c reductase core protein I) UQCRC1 antibody [N1N3]
Purification:	Purified by antigen-affinity chromatography.
Grade:	KO Validated

Target Details

Target:	UQCRC1
---------	--------

Target Details

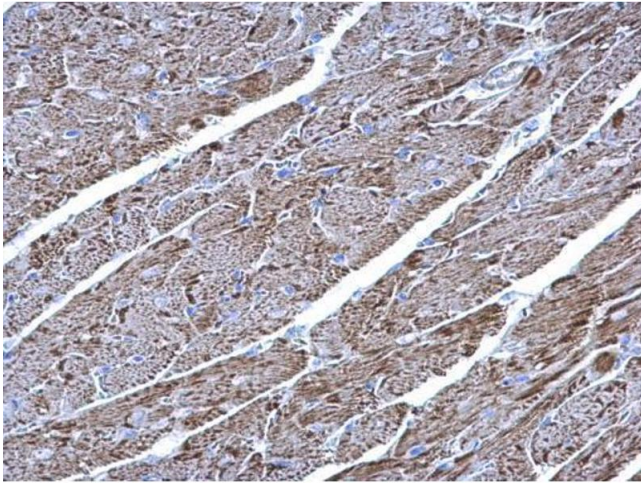
Alternative Name:	ubiquinol-cytochrome c reductase core protein 1 (UQCRC1 Products)
Background:	This is a component of the ubiquinol-cytochrome c reductase complex (complex III or cytochrome b-c1 complex), which is part of the mitochondrial respiratory chain. This protein may mediate formation of the complex between cytochromes c and c1. Cellular Localization: Mitochondrion inner membrane
Molecular Weight:	53 kDa
Gene ID:	7384
UniProt:	P31930

Application Details

Application Notes:	WB: 1:500-1:3000. IHC-P: 1:100-1:1000. Optimal dilutions/concentrations should be determined by the researcher. Not tested in other applications.
Comment:	Positive Control: Mouse brain , 293T Validation: KO/KD
Restrictions:	For Research Use only

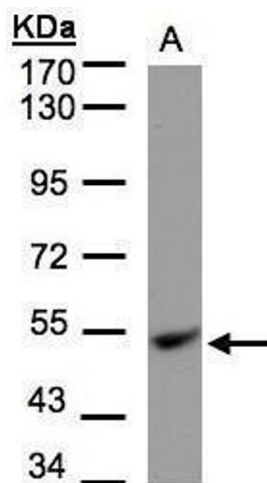
Handling

Format:	Liquid
Concentration:	1 mg/mL
Buffer:	1XPBS (pH 7), 20 % Glycerol, 0.01 % Thimerosal
Preservative:	Thimerosal (Merthiolate)
Precaution of Use:	This product contains Thimerosal (Merthiolate): a POISONOUS AND HAZARDOUS SUBSTANCE which should be handled by trained staff only.
Storage:	4 °C,-20 °C
Storage Comment:	Store as concentrated solution. Centrifuge briefly prior to opening vial. For short-term storage (1-2 weeks), store at 4°C. For long-term storage, aliquot and store at -20°C or below. Avoid multiple freeze-thaw cycles.



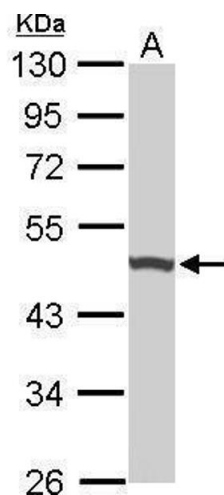
Immunohistochemistry

Image 1. IHC-P Image UQCRC1 antibody [N1N3] detects UQCRC1 protein at mitochondria on mouse heart by immunohistochemical analysis. Sample: Paraffin-embedded mouse heart. UQCRC1 antibody [N1N3], diluted at 1:500.



Western Blotting

Image 2. WB Image Sample (30 µg of whole cell lysate) A: Hep G2, 7.5% SDS PAGE antibody diluted at 1:1000



Western Blotting

Image 3. WB Image Sample (50 µg of whole cell lysate) A: Mouse brain 10% SDS PAGE antibody diluted at 1:1000

Please check the [product details page](#) for more images. Overall 4 images are available for ABIN2855203.