



Datasheet for ABIN2855204
anti-TUBB2A antibody



[Go to Product page](#)

5 Images

Overview

Quantity:	100 µL
Target:	TUBB2A
Reactivity:	Human
Host:	Rabbit
Clonality:	Polyclonal
Conjugate:	This TUBB2A antibody is un-conjugated
Application:	Western Blotting (WB), Immunohistochemistry (Paraffin-embedded Sections) (IHC (p)), Immunofluorescence (IF), Immunocytochemistry (ICC)

Product Details

Immunogen:	Recombinant protein encompassing a sequence within the center region of human beta Tubulin 2. The exact sequence is proprietary.
Isotype:	IgG
Cross-Reactivity:	Human, Mouse
Characteristics:	Rabbit Polyclonal antibody to beta Tubulin 2 (tubulin, beta 2A) beta Tubulin 2 antibody [N1C1]
Purification:	Purified by antigen-affinity chromatography.

Target Details

Target:	TUBB2A
Alternative Name:	tubulin beta 2A class IIa (TUBB2A Products)

Target Details

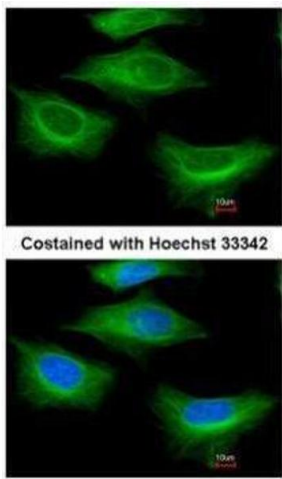
Background:	Tubulin is the major constituent of microtubules. It binds two moles of GTP, one at an exchangeable site on the beta chain and one at a non-exchangeable site on the alpha-chain.
Molecular Weight:	50 kDa
Gene ID:	7280
UniProt:	Q13885
Pathways:	Microtubule Dynamics, M Phase

Application Details

Application Notes:	WB: 1:1000-1:10000. ICC/IF: 1:100-1:1000. IHC-P: 1:100-1:1000. Optimal dilutions/concentrations should be determined by the researcher. Not tested in other applications.
Comment:	Positive Control: NIH-3T3 , Mouse brain , 293T
Restrictions:	For Research Use only

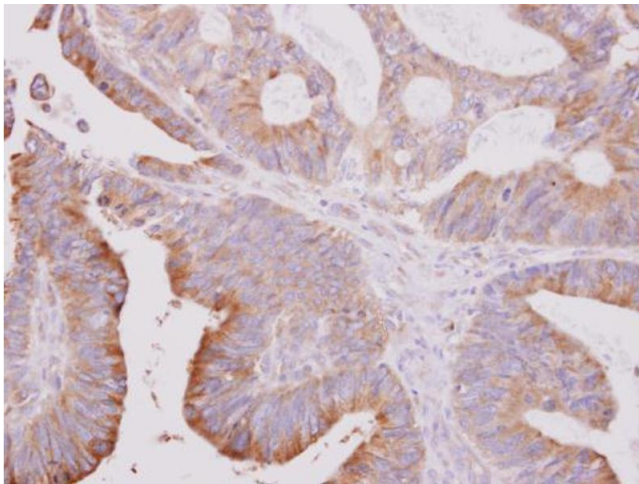
Handling

Format:	Liquid
Concentration:	1 mg/mL
Buffer:	1XPBS (pH 7), 1 % BSA, 20 % Glycerol, 0.01 % Thimerosal
Preservative:	Thimerosal (Merthiolate)
Precaution of Use:	This product contains Thimerosal (Merthiolate): a POISONOUS AND HAZARDOUS SUBSTANCE which should be handled by trained staff only.
Storage:	4 °C,-20 °C
Storage Comment:	Store as concentrated solution. Centrifuge briefly prior to opening vial. For short-term storage (1-2 weeks), store at 4°C. For long-term storage, aliquot and store at -20°C or below. Avoid multiple freeze-thaw cycles.



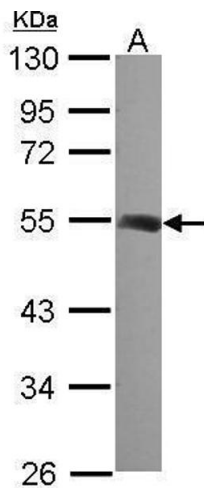
Immunofluorescence

Image 1. ICC/IF Image Immunofluorescence analysis of paraformaldehyde-fixed HeLa, using beta Tubulin 2, antibody at 1:200 dilution.



Immunohistochemistry

Image 2. IHC-P Image beta Tubulin 2 antibody [N1C1] detects beta Tubulin 2 protein at cytoplasm on human colon carcinoma by immunohistochemical analysis. Sample: Paraffin-embedded colon carcinoma. beta Tubulin 2 antibody [N1C1], dilution: 1:500.



Western Blotting

Image 3. WB Image Sample (30 ug of whole cell lysate) A: 293T 10% SDS PAGE antibody diluted at 1:1000

Please check the [product details page](#) for more images. Overall 5 images are available for ABIN2855204.