

Datasheet for ABIN2855205

**anti-HLA-DRA antibody**[Go to Product page](#)**2** Images

## Overview

Quantity:	100 µL
Target:	HLA-DRA
Reactivity:	Human
Host:	Rabbit
Clonality:	Polyclonal
Conjugate:	This HLA-DRA antibody is un-conjugated
Application:	Western Blotting (WB), Immunohistochemistry (Paraffin-embedded Sections) (IHC (p))

## Product Details

Immunogen:	Recombinant protein encompassing a sequence within the center region of human HLA-DRA. The exact sequence is proprietary.
Isotype:	IgG
Cross-Reactivity:	Human
Characteristics:	Rabbit Polyclonal antibody to HLA-DRA (major histocompatibility complex, class II, DR alpha) HLA-DRA antibody
Purification:	Purified by antigen-affinity chromatography.

## Target Details

Target:	HLA-DRA
Alternative Name:	major histocompatibility complex, class II, DR alpha ( <a href="#">HLA-DRA Products</a> )

## Target Details

**Background:** HLA-DRA is one of the HLA class II alpha chain paralogues. This class II molecule is a heterodimer consisting of an alpha and a beta chain, both anchored in the membrane. It plays a central role in the immune system by presenting peptides derived from extracellular proteins. Class II molecules are expressed in antigen presenting cells (APC: B lymphocytes, dendritic cells, macrophages). The alpha chain is approximately 33-35 kDa and its gene contains 5 exons. Exon 1 encodes the leader peptide, exons 2 and 3 encode the two extracellular domains, and exon 4 encodes the transmembrane domain and the cytoplasmic tail. DRA does not have polymorphisms in the peptide binding part and acts as the sole alpha chain for DRB1, DRB3, DRB4 and DRB5.

Cellular Localization: Membrane

**Molecular Weight:** 29 kDa

**Gene ID:** 3122

**UniProt:** [P01903](#)

**Pathways:** [TCR Signaling](#), [CXCR4-mediated Signaling Events](#), [Human Leukocyte Antigen \(HLA\) in Adaptive Immune Response](#)

## Application Details

**Application Notes:** WB: 1:500-1:3000. IHC-P: 1:100-1:1000. Optimal dilutions/concentrations should be determined by the researcher. Not tested in other applications.

**Comment:** Positive Control: H1299

**Restrictions:** For Research Use only

## Handling

**Format:** Liquid

**Concentration:** 0.21 mg/mL

**Buffer:** 1XPBS ( pH 7), 10 % Glycerol, 0.01 % Thimerosal

**Preservative:** Thimerosal (Merthiolate)

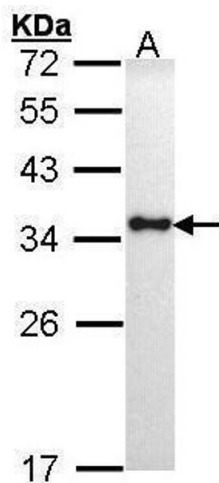
**Precaution of Use:** This product contains Thimerosal (Merthiolate): a POISONOUS AND HAZARDOUS SUBSTANCE which should be handled by trained staff only.

**Storage:** 4 °C, -20 °C

## Handling

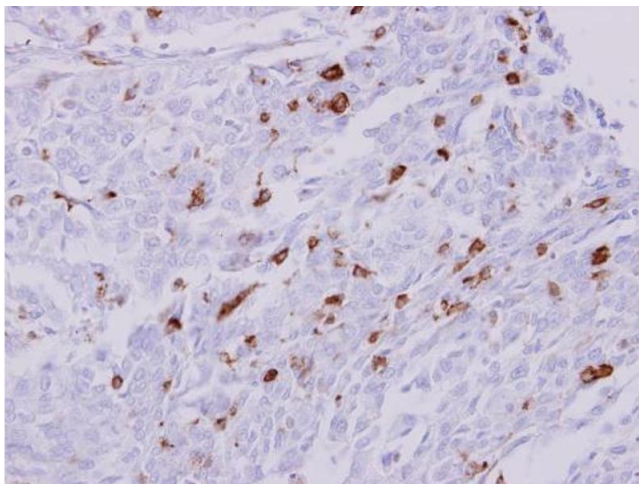
Storage Comment: Store as concentrated solution. Centrifuge briefly prior to opening vial. For short-term storage (1-2 weeks), store at 4°C. For long-term storage, aliquot and store at -20°C or below. Avoid multiple freeze-thaw cycles.

## Images



### Western Blotting

**Image 1.** WB Image Sample (30 ug of whole cell lysate) A: H1299 12% SDS PAGE antibody diluted at 1:1000



### Immunohistochemistry

**Image 2.** IHC-P Image HLA-DRA antibody detects HLA-DRA protein at membrane on human Leukocytes in liver carcinoma by immunohistochemical analysis. Sample: Paraffin-embedded Leukocytes in liver carcinoma. HLA-DRA antibody, dilution: 1:250.