

Datasheet for ABIN2855209
anti-Endomucin antibody



[Go to Product page](#)

2 Images

Overview

Quantity:	100 µL
Target:	Endomucin (EMCN)
Reactivity:	Human
Host:	Rabbit
Clonality:	Polyclonal
Conjugate:	This Endomucin antibody is un-conjugated
Application:	Western Blotting (WB), Immunohistochemistry (Paraffin-embedded Sections) (IHC (p))

Product Details

Immunogen:	Recombinant protein encompassing a sequence within the center region of human Endomucin. The exact sequence is proprietary.
Isotype:	IgG
Cross-Reactivity:	Human
Characteristics:	Rabbit polyclonal antibody to Endomucin (endomucin) Endomucin antibody [N1C2]
Purification:	Purified by antigen-affinity chromatography.

Target Details

Target:	Endomucin (EMCN)
Alternative Name:	endomucin (EMCN Products)

Target Details

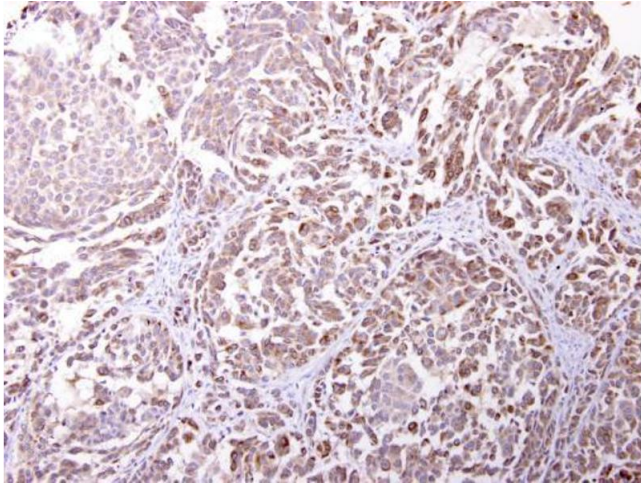
Background:	EMCN is a mucin-like sialoglycoprotein that interferes with the assembly of focal adhesion complexes and inhibits interaction between cells and the extracellular matrix (Kinoshita et al., 2001 [PubMed 11418125]).[supplied by OMIM] Cellular Localization: Isoform 1: Cell membrane, Single-pass type I membrane protein , Membrane, Single-pass type I membrane protein , Isoform 2: Secreted
Molecular Weight:	27 kDa
Gene ID:	51705
UniProt:	Q9ULC0

Application Details

Application Notes:	WB: 1:500-1:3000. IHC-P: 1:100-1:1000. Optimal dilutions/concentrations should be determined by the researcher. Not tested in other applications.
Restrictions:	For Research Use only

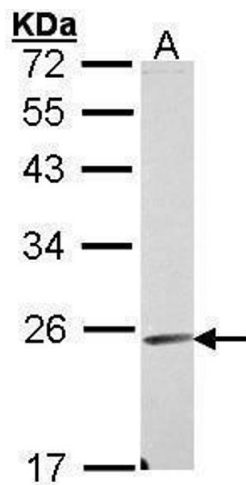
Handling

Format:	Liquid
Concentration:	1 mg/mL
Buffer:	1XPBS (pH 7), 40 % Glycerol, 0.01 % Thimerosal
Preservative:	Thimerosal (Merthiolate)
Precaution of Use:	This product contains Thimerosal (Merthiolate): a POISONOUS AND HAZARDOUS SUBSTANCE which should be handled by trained staff only.
Storage:	4 °C,-20 °C
Storage Comment:	Store as concentrated solution. Centrifuge briefly prior to opening vial. For short-term storage (1-2 weeks), store at 4°C. For long-term storage, aliquot and store at -20°C or below. Avoid multiple freeze-thaw cycles.



Immunohistochemistry

Image 1. IHC-P Image Endomucin antibody [N1C2] detects Endomucin protein at cytosol on human lung carcinoma by immunohistochemical analysis. Sample: Paraffin-embedded human lung carcinoma. Endomucin antibody [N1C2] , dilution: 1:250.



Western Blotting

Image 2. WB Image Sample (30 ug of whole cell lysate) A: A431 , 12% SDS PAGE antibody diluted at 1:1000