

Datasheet for ABIN2855212

anti-ACTC1 antibody

7 Images

4 Publications

[Go to Product page](#)

Overview

Quantity:	100 µL
Target:	ACTC1
Reactivity:	Human
Host:	Rabbit
Clonality:	Polyclonal
Conjugate:	This ACTC1 antibody is un-conjugated
Application:	Western Blotting (WB), Immunohistochemistry (Paraffin-embedded Sections) (IHC (p)), Immunocytochemistry (ICC), Immunofluorescence (IF)

Product Details

Immunogen:	Recombinant protein encompassing a sequence within the center region of human alpha Cardiac Muscle Actin. The exact sequence is proprietary.
Isotype:	IgG
Cross-Reactivity:	Human, Mouse, Rat
Characteristics:	Rabbit Polyclonal antibody to alpha Cardiac Muscle Actin (actin, alpha, cardiac muscle 1) alpha Cardiac Muscle Actin antibody
Purification:	Purified by antigen-affinity chromatography.

Target Details

Target:	ACTC1
Alternative Name:	actin alpha cardiac muscle 1 (ACTC1 Products)

Target Details

Background:	<p>Actins are highly conserved proteins that are involved in various types of cell motility. Polymerization of globular actin (G-actin) leads to a structural filament (F-actin) in the form of a two-stranded helix. Each actin can bind to four others. The protein encoded by this gene belongs to the actin family which is comprised of three main groups of actin isoforms, alpha, beta, and gamma. The alpha actins are found in muscle tissues and are a major constituent of the contractile apparatus. Defects in this gene have been associated with idiopathic dilated cardiomyopathy (IDC) and familial hypertrophic cardiomyopathy (FHC).</p> <p>Cellular Localization: Cytoplasm , cytoskeleton</p>
Molecular Weight:	42 kDa
Gene ID:	70
UniProt:	P68032
Pathways:	Myometrial Relaxation and Contraction

Application Details

Application Notes:	WB: 1:500-1:10000. ICC/IF: 1:100-1:1000. IHC-P: 1:100-1:1000. Optimal dilutions/concentrations should be determined by the researcher. Not tested in other applications.
Comment:	Positive Control: PC-12 , Rat2 , Jurkat , Raji , K562 , THP-1 , NIH-3T3 , JC , BCL-1 , Rat muscle
Restrictions:	For Research Use only

Handling

Format:	Liquid
Concentration:	1.56 mg/mL
Buffer:	1XPBS (pH 7), 20 % Glycerol, 0.025 % ProClin 300
Preservative:	ProClin
Precaution of Use:	This product contains ProClin: a POISONOUS AND HAZARDOUS SUBSTANCE which should be handled by trained staff only.
Storage:	4 °C, -20 °C
Storage Comment:	Store as concentrated solution. Centrifuge briefly prior to opening vial. For short-term storage (1-2 weeks), store at 4°C. For long-term storage, aliquot and store at -20°C or below. Avoid multiple freeze-thaw cycles.

Publications

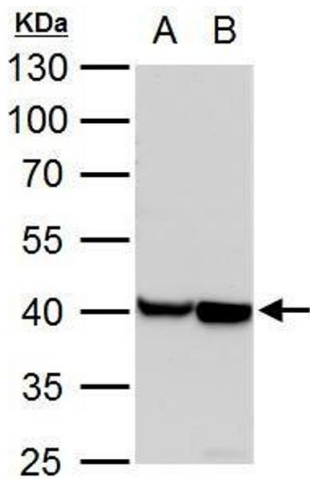
Product cited in: Henry, Szabó, Sutus, Pirtly: "RYBP is important for cardiac progenitor cell development and sarcomere formation." in: **PLoS ONE**, Vol. 15, Issue 7, pp. e0235922, (2020) ([PubMed](#)).

Oldershaw, Owens, Sutherland, Linney, Liddle, Magana, Lash, Gill, Richardson, Meeson: "Human Cardiac-Mesenchymal Stem Cell-Like Cells, a Novel Cell Population with Therapeutic Potential." in: **Stem cells and development**, Vol. 28, Issue 9, pp. 593-607, (2020) ([PubMed](#)).

Miksiunas, Rucinskas, Janusauskas, Labeit, Bironaite: "Histone Deacetylase Inhibitor Suberoylanilide Hydroxamic Acid Improves Energetic Status and Cardiomyogenic Differentiation of Human Dilated Myocardium-Derived Primary Mesenchymal Cells." in: **International journal of molecular sciences**, Vol. 21, Issue 14, (2020) ([PubMed](#)).

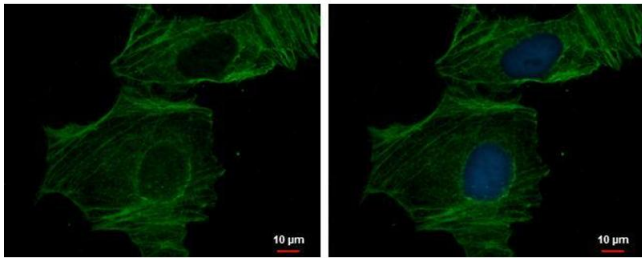
Robertson, Wen, Yin, Chen, Smith, Paine: "Multiple Calcium Export Exchangers and Pumps Are a Prominent Feature of Enamel Organ Cells." in: **Frontiers in physiology**, Vol. 8, pp. 336, (2017) ([PubMed](#)).

Images



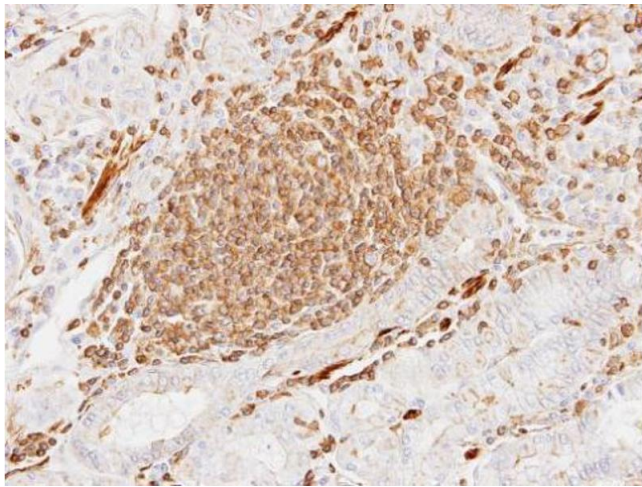
Western Blotting

Image 1. WB Image alpha Actin (cardiac muscle) antibody detects alpha Actin (cardiac muscle) protein by western blot analysis. A. 30 µg PC-12 whole cell lysate/extract B. 30 µg Rat2 whole cell lysate/extract 10 % SDS-PAGE alpha Actin (cardiac muscle) antibody , dilution: 1:10000



Immunofluorescence

Image 2. ICC/IF Image alpha Actin (cardiac muscle) antibody detects alpha Actin (cardiac muscle) protein at cytoskeleton by immunofluorescent analysis. Sample: HeLa cells were fixed in 0.5% Triton X-100 for 1 min, then ice-cold methanol for 5 min. Green: alpha Actin (cardiac muscle) protein stained by alpha Actin (cardiac muscle) antibody, diluted at 1:200. Blue: Hoechst 33342 staining.



Immunohistochemistry

Image 3. IHC-P Image Immunohistochemical analysis of paraffin-embedded human gastric cancer, using alpha Actin (cardiac muscle), antibody at 1:100 dilution.

Please check the [product details page](#) for more images. Overall 7 images are available for ABIN2855212.