

Datasheet for ABIN2855219

anti-PRKCSH antibody

4 Images

[Go to Product page](#)

Overview

Quantity:	100 µL
Target:	PRKCSH
Reactivity:	Human
Host:	Rabbit
Clonality:	Polyclonal
Conjugate:	This PRKCSH antibody is un-conjugated
Application:	Western Blotting (WB), Immunofluorescence (IF), Immunocytochemistry (ICC), Immunohistochemistry (Paraffin-embedded Sections) (IHC (p))

Product Details

Immunogen:	Recombinant protein encompassing a sequence within the center region of human PRKCSH. The exact sequence is proprietary.
Isotype:	IgG
Cross-Reactivity:	Human
Characteristics:	Rabbit polyclonal antibody to PRKCSH (protein kinase C substrate 80K-H) PRKCSH antibody [N1C1]
Purification:	Purified by antigen-affinity chromatography.
Grade:	KO Validated

Target Details

Target:	PRKCSH
---------	--------

Target Details

Alternative Name:	protein kinase C substrate 80K-H (PRKCSH Products)
Background:	<p>This gene encodes the beta-subunit of glucosidase II, an N-linked glycan-processing enzyme in the endoplasmic reticulum (ER). This protein is an acidic phospho-protein known to be a substrate for protein kinase C. Mutations in this gene have been associated with the autosomal dominant polycystic liver disease (PCLD). Alternatively spliced transcript variants encoding distinct isoforms have been observed.</p> <p>Cellular Localization: Endoplasmic reticulum</p>
Molecular Weight:	59 kDa
Gene ID:	5589
UniProt:	P14314
Pathways:	Cellular Glucan Metabolic Process , Methionine Biosynthetic Process

Application Details

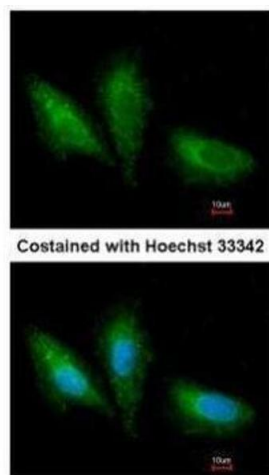
Application Notes:	WB: 1:5000-1:20000. ICC/IF: 1:100-1:1000. IHC-P: 1:100-1:1000. Optimal dilutions/concentrations should be determined by the researcher. Not tested in other applications.
Comment:	Positive Control: A431 , 293T Validation: KO/KD
Restrictions:	For Research Use only

Handling

Format:	Liquid
Concentration:	0.94 mg/mL
Buffer:	0.1M Tris-Glycine (pH 7), 10 % Glycerol, 0.01 % Thimerosal
Preservative:	Thimerosal (Merthiolate)
Precaution of Use:	This product contains Thimerosal (Merthiolate): a POISONOUS AND HAZARDOUS SUBSTANCE which should be handled by trained staff only.
Storage:	4 °C,-20 °C
Storage Comment:	Store as concentrated solution. Centrifuge briefly prior to opening vial. For short-term storage

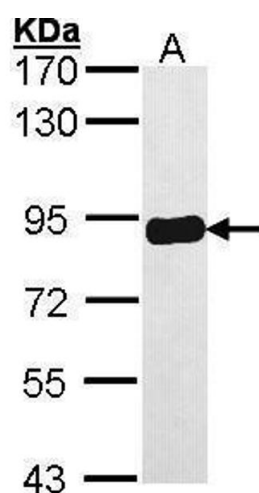
(1-2 weeks), store at 4°C. For long-term storage, aliquot and store at -20°C or below. Avoid multiple freeze-thaw cycles.

Images



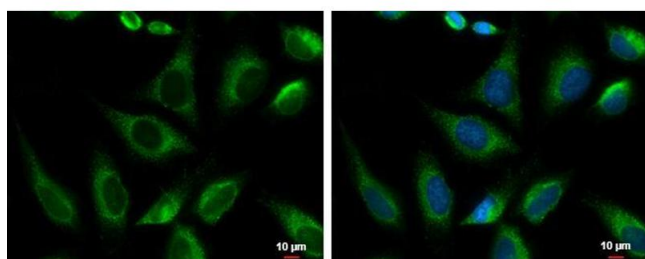
Immunofluorescence

Image 1. ICC/IF Image Immunofluorescence analysis of paraformaldehyde-fixed A549, using PRKCSH, antibody at 1:200 dilution.



Western Blotting

Image 2. WB Image Sample (30 ug of whole cell lysate) A: A431, 7.5% SDS PAGE antibody diluted at 1:10000



Immunofluorescence

Image 3. ICC/IF Image PRKCSH antibody [N1C1] detects PRKCSH protein at endoplasmic reticulum by immunofluorescent analysis. Sample: HeLa cells were fixed in 4% paraformaldehyde at RT for 15 min. Green: PRKCSH protein stained by PRKCSH antibody [N1C1], diluted at 1:1000. Blue: Hoechst 33342 staining. Scale bar = 10 µm.

Please check the [product details page](#) for more images. Overall 4 images are available for ABIN2855219.