



[Go to Product page](#)

Datasheet for ABIN2855221  
**anti-UQCRC1 antibody**

3 Images

### Overview

Quantity:	100 µL
Target:	UQCRC1
Reactivity:	Human
Host:	Rabbit
Clonality:	Polyclonal
Conjugate:	This UQCRC1 antibody is un-conjugated
Application:	Western Blotting (WB), Immunofluorescence (IF), Immunocytochemistry (ICC)

### Product Details

Immunogen:	Recombinant protein encompassing a sequence within the center region of human UQCRC1. The exact sequence is proprietary.
Isotype:	IgG
Cross-Reactivity:	Human
Characteristics:	Rabbit Polyclonal antibody to UQCRC1 (ubiquinol-cytochrome c reductase core protein I) UQCRC1 antibody
Purification:	Purified by antigen-affinity chromatography.
Grade:	KO Validated

### Target Details

Target:	UQCRC1
---------	--------

## Target Details

---

Alternative Name:	ubiquinol-cytochrome c reductase core protein 1 ( <a href="#">UQCRC1 Products</a> )
Background:	This is a component of the ubiquinol-cytochrome c reductase complex (complex III or cytochrome b-c1 complex), which is part of the mitochondrial respiratory chain. This protein may mediate formation of the complex between cytochromes c and c1.  Cellular Localization: Mitochondrion inner membrane
Molecular Weight:	53 kDa
Gene ID:	7384
UniProt:	<a href="#">P31930</a>

## Application Details

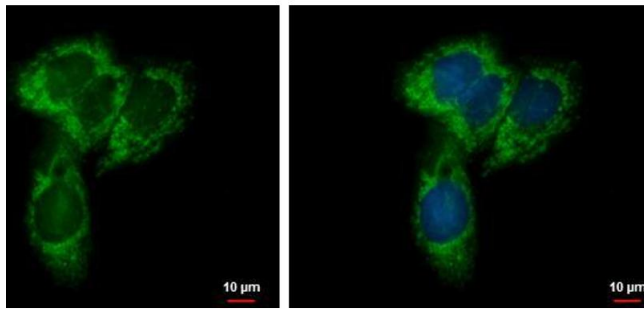
---

Application Notes:	WB: 1:1000-1:20000. ICC/IF: 1:100-1:1000. Optimal dilutions/concentrations should be determined by the researcher. Not tested in other applications.
Comment:	Positive Control: 293T , A431 , HeLa , HepG2 , A375 , Huh7 , Hep3B Validation: KO/KD
Restrictions:	For Research Use only

## Handling

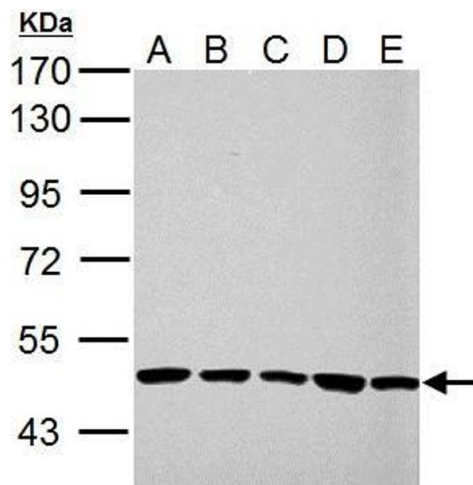
---

Format:	Liquid
Concentration:	1 mg/mL
Buffer:	1XPBS ( pH 7), 20 % Glycerol, 0.01 % Thimerosal
Preservative:	Thimerosal (Merthiolate)
Precaution of Use:	This product contains Thimerosal (Merthiolate): a POISONOUS AND HAZARDOUS SUBSTANCE which should be handled by trained staff only.
Storage:	4 °C, -20 °C
Storage Comment:	Store as concentrated solution. Centrifuge briefly prior to opening vial. For short-term storage (1-2 weeks), store at 4°C. For long-term storage, aliquot and store at -20°C or below. Avoid multiple freeze-thaw cycles.



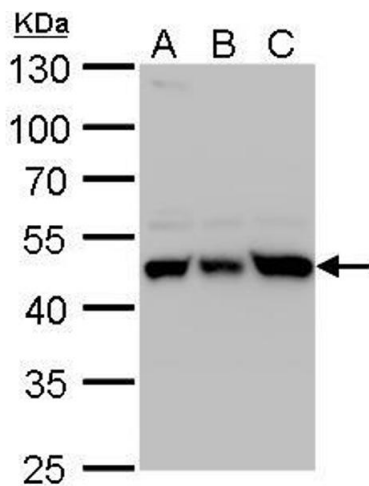
### Immunofluorescence

**Image 1.** ICC/IF Image NYREN18 antibody [N1N3] detects NYREN18 protein at mitochondria by immunofluorescent analysis. Sample: HepG2 cells were fixed in 2% paraformaldehyde/culture medium at 37°C for 30 min. *Green: NYREN18 protein stained by NYREN18 antibody [N1N3], diluted at 1:500. Blue: Hoechst 33342 staining.*



### Western Blotting

**Image 2.** WB Image UQCRC1 antibody detects UQCRC1 protein by western blot analysis. A. 30 µg 293T whole cell lysate/extract B. 30 µg A431 whole cell lysate/extract C. 30 µg HeLa whole cell lysate/extract D. 30 µg HepG2 whole cell lysate/extract E. 30 µg A375 whole cell lysate/extract 10 % SDS-PAGE UQCRC1 antibody, dilution: 1:10000



### Western Blotting

**Image 3.** WB Image UQCRC1 antibody detects UQCRC1 protein by western blot analysis. A Huh7 whole cell lysate/extract B Hep3B whole cell lysate/extract C HepG2 whole cell lysate/extract 10 % SDS-PAGE UQCRC1 antibody, dilution: 1:5000