



Datasheet for ABIN2855222
anti-ACTC1 antibody



[Go to Product page](#)

4 Images

Overview

Quantity:	100 µL
Target:	ACTC1
Reactivity:	Mouse
Host:	Rabbit
Clonality:	Polyclonal
Conjugate:	This ACTC1 antibody is un-conjugated
Application:	Western Blotting (WB), Immunohistochemistry (Paraffin-embedded Sections) (IHC (p))

Product Details

Immunogen:	Recombinant protein encompassing a sequence within the center region of mouse alpha Cardiac Muscle Actin. The exact sequence is proprietary.
Isotype:	IgG
Cross-Reactivity:	Mouse
Characteristics:	Rabbit Polyclonal antibody to alpha Cardiac Muscle Actin (actin, alpha, cardiac muscle 1) alpha Cardiac Muscle Actin antibody
Purification:	Purified by antigen-affinity chromatography.

Target Details

Target:	ACTC1
Alternative Name:	actin, alpha, cardiac muscle 1 (ACTC1 Products)

Target Details

Background: Actins are highly conserved proteins that are involved in various types of cell motility and are ubiquitously expressed in all eukaryotic cells.

Cellular Localization: Cytoplasm , cytoskeleton

Molecular Weight: 42 kDa

Gene ID: 11464

UniProt: [P68033](#)

Pathways: [Myometrial Relaxation and Contraction](#)

Application Details

Application Notes: WB: 1:500-1:3000. IHC-P: 1:100-1:1000. Optimal dilutions/concentrations should be determined by the researcher. Not tested in other applications.

Comment: Positive Control: NIH-3T3

Restrictions: For Research Use only

Handling

Format: Liquid

Concentration: 0.25 mg/mL

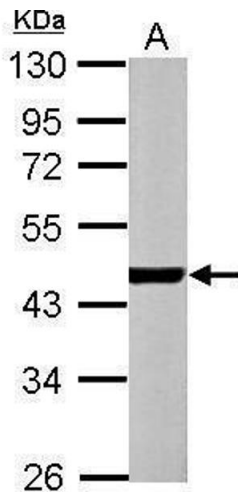
Buffer: 0.1M Tris-Glycine (pH 7), 10 % Glycerol, 0.01 % Thimerosal

Preservative: Thimerosal (Merthiolate)

Precaution of Use: This product contains Thimerosal (Merthiolate): a POISONOUS AND HAZARDOUS SUBSTANCE which should be handled by trained staff only.

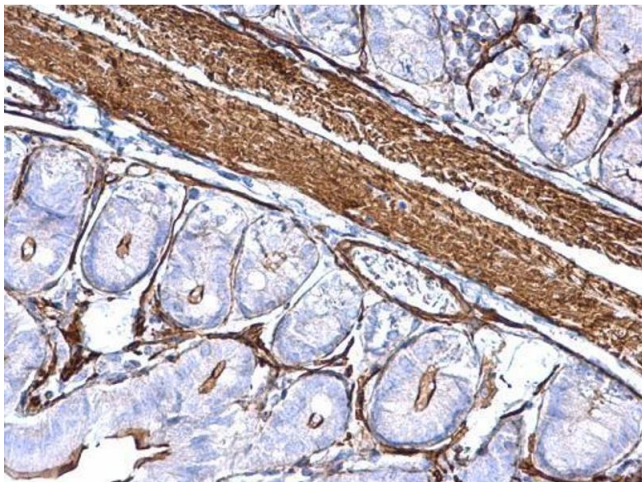
Storage: 4 °C,-20 °C

Storage Comment: Store as concentrated solution. Centrifuge briefly prior to opening vial. For short-term storage (1-2 weeks), store at 4°C. For long-term storage, aliquot and store at -20°C or below. Avoid multiple freeze-thaw cycles.



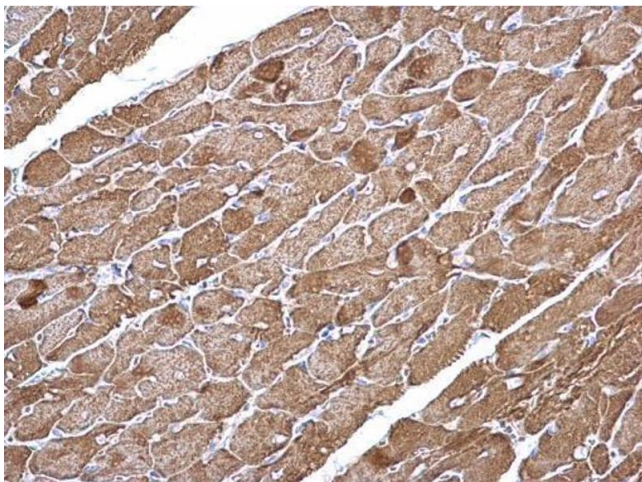
Western Blotting

Image 1. WB Image Sample (30 ug of whole cell lysate) A:
NIH-3T3 10% SDS PAGE antibody diluted at 1:1000



Immunohistochemistry

Image 2. IHC-P Image alpha Cardiac Muscle Actin antibody detects alpha Cardiac Muscle Actin protein at cytoplasm on mouse small intestine by immunohistochemical analysis. Sample: Paraffin-embedded mouse small intestine. alpha Cardiac Muscle Actin antibody , diluted at 1:500.



Immunohistochemistry

Image 3. IHC-P Image alpha Cardiac Muscle Actin antibody detects alpha Cardiac Muscle Actin protein at cytoplasm on mouse heart by immunohistochemical analysis. Sample: Paraffin-embedded mouse heart. alpha Cardiac Muscle Actin antibody , diluted at 1:500.

Please check the [product details page](#) for more images. Overall 4 images are available for ABIN2855222.