

Datasheet for ABIN2855228

anti-ACVRL1 antibody (Internal Region)**2** Images[Go to Product page](#)

Overview

Quantity:	100 µL
Target:	ACVRL1
Binding Specificity:	Internal Region
Reactivity:	Human, Mouse
Host:	Rabbit
Clonality:	Polyclonal
Conjugate:	This ACVRL1 antibody is un-conjugated
Application:	Western Blotting (WB)

Product Details

Immunogen:	Recombinant protein encompassing a sequence within the center region of human ACVRL1. The exact sequence is proprietary.
Isotype:	IgG
Cross-Reactivity:	Rat (Rattus), Cow (Bovine)
Cross-Reactivity (Details):	Rat (97 %), Bovine (99 %)
Characteristics:	Rabbit polyclonal antibody to ACVRL1 (activin A receptor type II-like 1) ACVRL1 antibody [N2C1], Internal
Purification:	Purified by antigen-affinity chromatography.

Target Details

Target:	ACVRL1
Alternative Name:	ACVRL1 (ACVRL1 Products)
Background:	<p>This gene encodes a type I cell-surface receptor for the TGF-beta superfamily of ligands. It shares with other type I receptors a high degree of similarity in serine-threonine kinase subdomains, a glycine- and serine-rich region (called the GS domain) preceding the kinase domain, and a short C-terminal tail. The encoded protein, sometimes termed ALK1, shares similar domain structures with other closely related ALK or activin receptor-like kinase proteins that form a subfamily of receptor serine/threonine kinases. Mutations in this gene are associated with hemorrhagic telangiectasia type 2, also known as Rendu-Osler-Weber syndrome 2.</p> <p>Cellular Localization: Membrane</p>
Molecular Weight:	56 kDa
Gene ID:	94

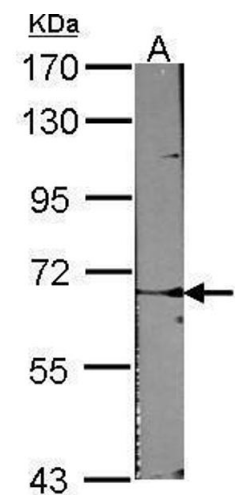
Application Details

Application Notes:	<p>Suggested dilution Reference Western blot 1:500-1:3000* Not tested in other applications.</p> <p>*Optimal dilutions/concentrations should be determined by the researcher.Suggested dilutionReferenceWestern blot1:500-1:3000*</p>
Comment:	Positive Control: 293T , 293T mem , HepG2 , HepG2 mem , NIH-3T3
Restrictions:	For Research Use only

Handling

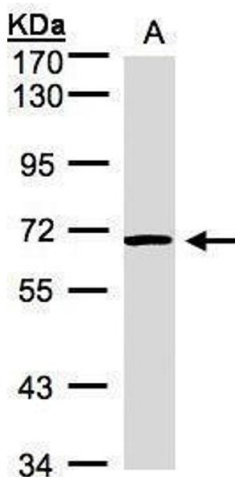
Format:	Liquid
Concentration:	0.78 mg/mL
Buffer:	0.1M Tris, 0.1M Glycine, 10 % Glycerol (pH 7). 0.01 % Thimerosal was added as a preservative.
Preservative:	Thimerosal (Merthiolate)
Precaution of Use:	This product contains Thimerosal (Merthiolate): a POISONOUS AND HAZARDOUS SUBSTANCE which should be handled by trained staff only.
Storage:	-20 °C
Storage Comment:	Keep as concentrated solution. Aliquot and store at -20°C or below. Avoid multiple freeze-thaw

cycles.



Western Blotting

Image 1. WB Image Sample (30 ug of whole cell lysate)
A:NIH-3T3 7.5% SDS PAGE antibody diluted at 1:1000



Western Blotting

Image 2. WB Image Sample(30 µg of whole cell lysate)
A:Hep G2, 7.5% SDS PAGE antibody diluted at 1:1000