

Datasheet for ABIN2855232

**anti-TBCB antibody**

## 4 Images

[Go to Product page](#)

## Overview

Quantity:	100 µL
Target:	TBCB
Reactivity:	Human
Host:	Rabbit
Clonality:	Polyclonal
Conjugate:	This TBCB antibody is un-conjugated
Application:	Western Blotting (WB), Immunofluorescence (IF), Immunohistochemistry (Paraffin-embedded Sections) (IHC (p)), Immunocytochemistry (ICC)

## Product Details

Immunogen:	Recombinant protein encompassing a sequence within the center region of human CKAP1. The exact sequence is proprietary.
Isotype:	IgG
Cross-Reactivity:	Human, Mouse
Characteristics:	Rabbit Polyclonal antibody to CKAP1 (tubulin folding cofactor B) CKAP1 antibody [N1C3]
Purification:	Purified by antigen-affinity chromatography.

## Target Details

Target:	TBCB
Alternative Name:	tubulin folding cofactor B ( <a href="#">TBCB Products</a> )

## Target Details

**Background:** Binds to alpha-tubulin folding intermediates after their interaction with cytosolic chaperonin in the pathway leading from newly synthesized tubulin to properly folded heterodimer. Involved in regulation of tubulin heterodimer dissociation. May function as a negative regulator of axonal growth.

Cellular Localization: Cytoplasm , cytoskeleton

**Molecular Weight:** 27 kDa

**Gene ID:** 1155

**UniProt:** [Q99426](#)

## Application Details

**Application Notes:** WB: 1:500-1:3000. ICC/IF: 1:100-1:1000. IHC-P: 1:100-1:1000. Optimal dilutions/concentrations should be determined by the researcher. Not tested in other applications.

**Comment:** Positive Control: NIH-3T3 , A431 , H1299 , HeLa

**Restrictions:** For Research Use only

## Handling

**Format:** Liquid

**Concentration:** 0.43 mg/mL

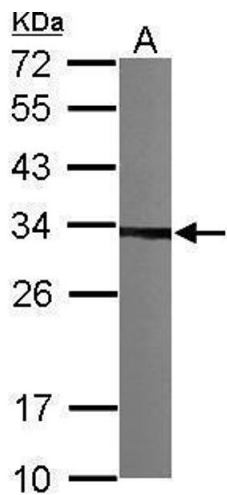
**Buffer:** 0.1M Tris-Glycine ( pH 7), 10 % Glycerol, 0.01 % Thimerosal

**Preservative:** Thimerosal (Merthiolate)

**Precaution of Use:** This product contains Thimerosal (Merthiolate): a POISONOUS AND HAZARDOUS SUBSTANCE which should be handled by trained staff only.

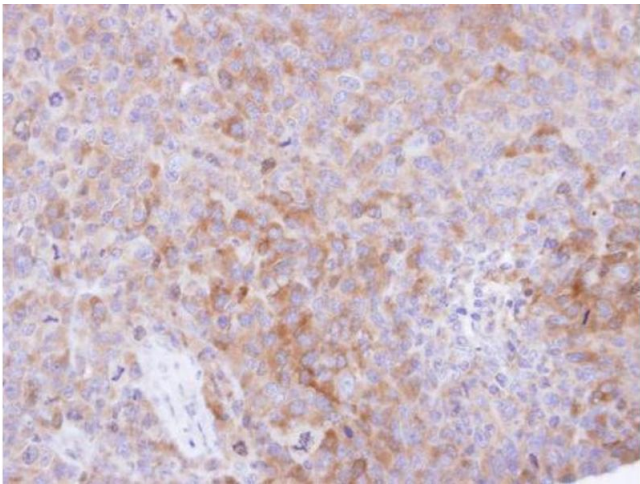
**Storage:** 4 °C,-20 °C

**Storage Comment:** Store as concentrated solution. Centrifuge briefly prior to opening vial. For short-term storage (1-2 weeks), store at 4°C. For long-term storage, aliquot and store at -20°C or below. Avoid multiple freeze-thaw cycles.



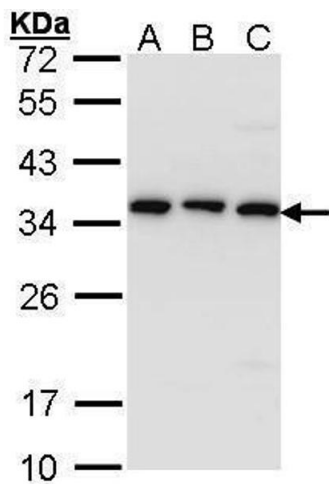
**Western Blotting**

**Image 1.** WB Image Sample (30 ug of whole cell lysate) A: NIH-3T3 12% SDS PAGE antibody diluted at 1:1000



**Immunohistochemistry**

**Image 2.** IHC-P Image Immunohistochemical analysis of paraffin-embedded H1299 xenograft , using CKAP1, antibody at 1:500 dilution.



**Western Blotting**

**Image 3.** WB Image Sample (30 ug of whole cell lysate) A: A431 , B: H1299 C: Hela 12% SDS PAGE antibody diluted at 1:1000

Please check the [product details page](#) for more images. Overall 4 images are available for ABIN2855232.