

Datasheet for ABIN2855240

anti-EIF3I antibody**2** Images[Go to Product page](#)

Overview

Quantity:	100 µL
Target:	EIF3I
Reactivity:	Human
Host:	Rabbit
Clonality:	Polyclonal
Conjugate:	This EIF3I antibody is un-conjugated
Application:	Western Blotting (WB), Immunofluorescence (IF), Immunocytochemistry (ICC)

Product Details

Immunogen:	Recombinant protein encompassing a sequence within the center region of human EIF3 beta. The exact sequence is proprietary.
Isotype:	IgG
Cross-Reactivity:	Human
Characteristics:	Rabbit Polyclonal antibody to EIF3 beta (eukaryotic translation initiation factor 3, subunit I) EIF3 beta antibody [N2C3]
Purification:	Affinity purified by Protein A.

Target Details

Target:	EIF3I
Alternative Name:	eukaryotic translation initiation factor 3 subunit I (EIF3I Products)

Target Details

Background: Component of the eukaryotic translation initiation factor 3 (eIF-3) complex, which is required for several steps in the initiation of protein synthesis. The eIF-3 complex associates with the 40S ribosome and facilitates the recruitment of eIF-1, eIF-1A, eIF-2:GTP:methionyl-tRNAⁱ and eIF-5 to form the 43S preinitiation complex (43S PIC). The eIF-3 complex stimulates mRNA recruitment to the 43S PIC and scanning of the mRNA for AUG recognition. The eIF-3 complex is also required for disassembly and recycling of posttermination ribosomal complexes and subsequently prevents premature joining of the 40S and 60S ribosomal subunits prior to initiation.

Molecular Weight: 37 kDa

Gene ID: 8668

UniProt: [Q13347](#)

Pathways: [Mitotic G1-G1/S Phases](#), [DNA Replication](#), [Ribonucleoprotein Complex Subunit Organization](#), [Synthesis of DNA](#)

Application Details

Application Notes: WB: 1:500-1:3000. ICC/IF: 1:100-1:1000. Optimal dilutions/concentrations should be determined by the researcher. Not tested in other applications.

Comment: Positive Control: A431 , H1299

Restrictions: For Research Use only

Handling

Format: Liquid

Concentration: 2 mg/mL

Buffer: 1XPBS (pH 7), 40 % Glycerol, 0.01 % Thimerosal

Preservative: Thimerosal (Merthiolate)

Precaution of Use: This product contains Thimerosal (Merthiolate): a POISONOUS AND HAZARDOUS SUBSTANCE which should be handled by trained staff only.

Storage: 4 °C,-20 °C

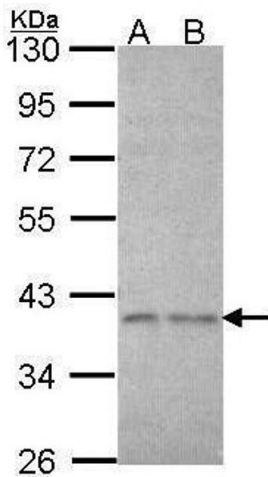
Storage Comment: Store as concentrated solution. Centrifuge briefly prior to opening vial. For short-term storage (1-2 weeks), store at 4°C. For long-term storage, aliquot and store at -20°C or below. Avoid

multiple freeze-thaw cycles.



Immunofluorescence

Image 1. ICC/IF Image Immunofluorescence analysis of methanol-fixed HeLa, using EIF3 beta, antibody at 1:200 dilution.



Western Blotting

Image 2. WB Image Sample (30 ug of whole cell lysate) A: A431 , B: H1299 10% SDS PAGE antibody diluted at 1:1000