

Datasheet for ABIN2855242

**anti-EIF3F antibody**

## 4 Images

[Go to Product page](#)

## Overview

Quantity:	100 µL
Target:	EIF3F
Reactivity:	Human
Host:	Rabbit
Clonality:	Polyclonal
Conjugate:	This EIF3F antibody is un-conjugated
Application:	Western Blotting (WB), Immunofluorescence (IF), Immunohistochemistry (Paraffin-embedded Sections) (IHC (p)), Immunocytochemistry (ICC)

## Product Details

Immunogen:	Recombinant protein encompassing a sequence within the center region of human EIF3F. The exact sequence is proprietary.
Isotype:	IgG
Cross-Reactivity:	Human, Mouse
Characteristics:	Rabbit Polyclonal antibody to EIF3F (eukaryotic translation initiation factor 3, subunit F) EIF3F antibody [N1C3]
Purification:	Purified by antigen-affinity chromatography.

## Target Details

Target:	EIF3F
Alternative Name:	eukaryotic translation initiation factor 3 subunit F ( <a href="#">EIF3F Products</a> )

## Target Details

**Background:** Component of the eukaryotic translation initiation factor 3 (eIF-3) complex, which is required for several steps in the initiation of protein synthesis. The eIF-3 complex associates with the 40S ribosome and facilitates the recruitment of eIF-1, eIF-1A, eIF-2:GTP:methionyl-tRNA<sup>i</sup> and eIF-5 to form the 43S preinitiation complex (43S PIC). The eIF-3 complex stimulates mRNA recruitment to the 43S PIC and scanning of the mRNA for AUG recognition. The eIF-3 complex is also required for disassembly and recycling of posttermination ribosomal complexes and subsequently prevents premature joining of the 40S and 60S ribosomal subunits prior to initiation.

Cellular Localization: Cytoplasm

**Molecular Weight:** 38 kDa

**Gene ID:** 8665

**UniProt:** [O00303](#)

**Pathways:** [Ribonucleoprotein Complex Subunit Organization](#)

## Application Details

**Application Notes:** WB: 1:500-1:3000. ICC/IF: 1:100-1:1000. IHC-P: 1:100-1:1000. Optimal dilutions/concentrations should be determined by the researcher. Not tested in other applications.

**Comment:** Positive Control: A431

**Restrictions:** For Research Use only

## Handling

**Format:** Liquid

**Concentration:** 0.39 mg/mL

**Buffer:** 1XPBS ( pH 7), 1 % BSA, 20 % Glycerol, 0.01 % Thimerosal

**Preservative:** Thimerosal (Merthiolate)

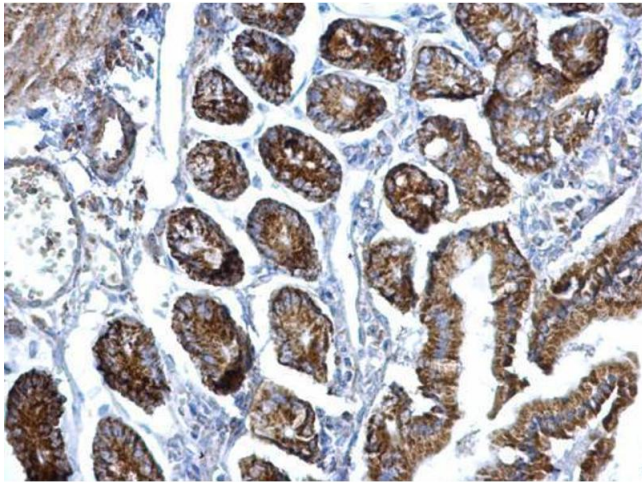
**Precaution of Use:** This product contains Thimerosal (Merthiolate): a POISONOUS AND HAZARDOUS SUBSTANCE which should be handled by trained staff only.

**Storage:** 4 °C,-20 °C

**Storage Comment:** Store as concentrated solution. Centrifuge briefly prior to opening vial. For short-term storage (1-2 weeks), store at 4°C. For long-term storage, aliquot and store at -20°C or below. Avoid

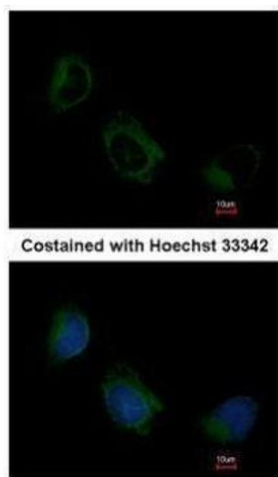
multiple freeze-thaw cycles.

## Images



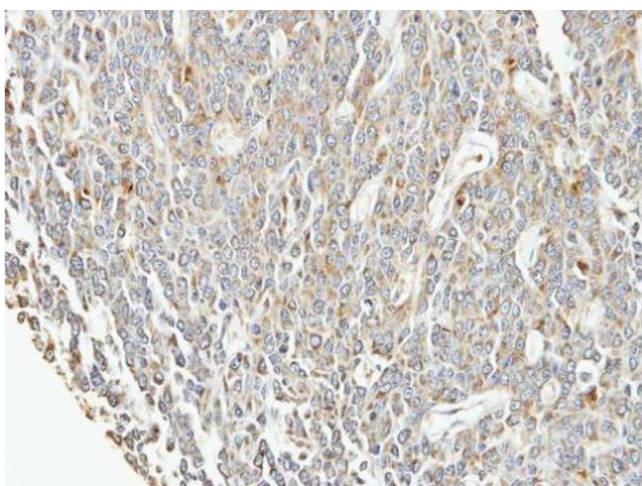
### Immunohistochemistry

**Image 1.** IHC-P Image EIF3F antibody [N1C3] detects EIF3F protein at nucleus on mouse intestine by immunohistochemical analysis. Sample: Paraffin-embedded mouse intestine. EIF3F antibody [N1C3] , dilution: 1:500.



### Immunofluorescence

**Image 2.** ICC/IF Image Immunofluorescence analysis of methanol-fixed HeLa, using EIF3F, antibody at 1:200 dilution.



### Immunohistochemistry

**Image 3.** IHC-P Image Immunohistochemical analysis of paraffin-embedded BT483 xenograft, using EIF3F, antibody at 1:100 dilution.

Please check the [product details page](#) for more images. Overall 4 images are available for ABIN2855242.