

Datasheet for ABIN2855245
anti-OTUB1 antibody (Center)



[Go to Product page](#)

3 Images

Overview

Quantity:	100 µL
Target:	OTUB1
Binding Specificity:	Center
Reactivity:	Human, Mouse
Host:	Rabbit
Clonality:	Polyclonal
Conjugate:	This OTUB1 antibody is un-conjugated
Application:	Western Blotting (WB), Immunocytochemistry (ICC), Immunofluorescence (IF)

Product Details

Immunogen:	Recombinant protein encompassing a sequence within the center region of human OTUB1. The exact sequence is proprietary.
Isotype:	IgG
Cross-Reactivity:	Rat (Rattus), Pig (Porcine), Cow (Bovine)
Cross-Reactivity (Details):	Rat (100 %), Pig (100 %), Bovine (100 %)
Characteristics:	Rabbit Polyclonal antibody to OTUB1 (OTU domain, ubiquitin aldehyde binding 1) OTUB1 antibody [N1C1]
Purification:	Purified by antigen-affinity chromatography.

Target Details

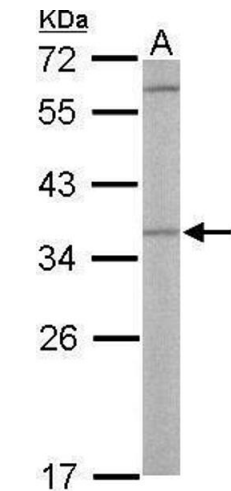
Target:	OTUB1
Alternative Name:	OTUB1 (OTUB1 Products)
Background:	The product of this gene is a member of the OTU (ovarian tumor) superfamily of predicted cysteine proteases. The encoded protein is a highly specific ubiquitin iso-peptidase, and cleaves ubiquitin from branched poly-ubiquitin chains but not from ubiquitinated substrates. It interacts with another ubiquitin protease and an E3 ubiquitin ligase that inhibits cytokine gene transcription in the immune system. It is proposed to function in specific ubiquitin-dependent pathways, possibly by providing an editing function for polyubiquitin chain growth. Alternative splicing results in multiple transcript variants.
Molecular Weight:	31 kDa
Gene ID:	55611

Application Details

Application Notes:	Suggested dilution Reference ICC/IF 1:100-1:1000* Western blot 1:500-1:3000* Not tested in other applications. *Optimal dilutions/concentrations should be determined by the researcher.Suggested dilutionReferenceICC/IF1:100-1:1000* Western blot1:500-1:3000*
Comment:	Positive Control: 293T , A431 , H1299 , HeLa , HepG2 , Molt-4 , Raji , mouse liver
Restrictions:	For Research Use only

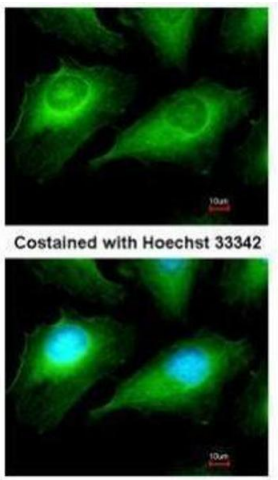
Handling

Format:	Liquid
Concentration:	0.249 mg/mL
Buffer:	1XPBS, 10 % Glycerol (pH 7). 0.01 % Thimerosal was added as a preservative.
Preservative:	Thimerosal (Merthiolate)
Precaution of Use:	This product contains Thimerosal (Merthiolate): a POISONOUS AND HAZARDOUS SUBSTANCE which should be handled by trained staff only.
Storage:	-20 °C
Storage Comment:	Keep as concentrated solution. Aliquot and store at -20°C or below. Avoid multiple freeze-thaw cycles.



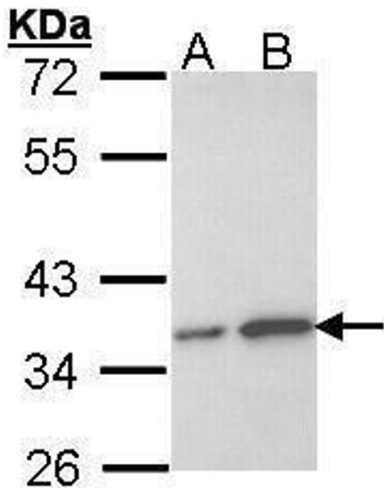
Western Blotting

Image 1. WB Image Sample (50 ug of whole cell lysate) A: Mouse liver 12% SDS PAGE antibody diluted at 1:500



Immunofluorescence

Image 2. ICC/IF Image Immunofluorescence analysis of methanol-fixed HeLa, using OTUB1, antibody at 1:50 dilution.



Western Blotting

Image 3. WB Image Sample (30 ug of whole cell lysate) A: HeLa B: Hep G2 , 12% SDS PAGE antibody diluted at 1:1000