

Datasheet for ABIN2855247

anti-ARPC3 antibody**2** Images[Go to Product page](#)

Overview

Quantity:	100 µL
Target:	ARPC3
Reactivity:	Human
Host:	Rabbit
Clonality:	Polyclonal
Conjugate:	This ARPC3 antibody is un-conjugated
Application:	Western Blotting (WB), Immunohistochemistry (Paraffin-embedded Sections) (IHC (p))

Product Details

Immunogen:	Recombinant protein encompassing a sequence within the center region of human p21-ARC. The exact sequence is proprietary.
Isotype:	IgG
Cross-Reactivity:	Human
Characteristics:	Rabbit polyclonal antibody to p21-ARC (actin related protein 2/3 complex, subunit 3, 21 kDa) p21-ARC antibody [N1C3]
Purification:	Purified by antigen-affinity chromatography.

Target Details

Target:	ARPC3
Alternative Name:	actin related protein 2/3 complex subunit 3 (ARPC3 Products)

Target Details

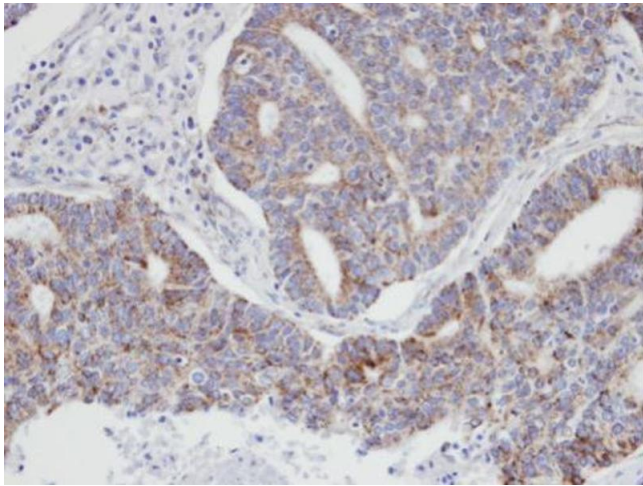
Background:	<p>This gene encodes one of seven subunits of the human Arp2/3 protein complex. The Arp2/3 protein complex has been implicated in the control of actin polymerization in cells and has been conserved through evolution. The exact role of the protein encoded by this gene, the p21 subunit, has yet to be determined.</p> <p>Cellular Localization: Cytoplasm , cytoskeleton , Cell projection</p>
Molecular Weight:	21 kDa
Gene ID:	10094
UniProt:	O15145
Pathways:	RTK Signaling, Regulation of Actin Filament Polymerization

Application Details

Application Notes:	WB: 1:500-1:3000. IHC-P: 1:100-1:1000. Optimal dilutions/concentrations should be determined by the researcher. Not tested in other applications.
Comment:	Positive Control: Raji
Restrictions:	For Research Use only

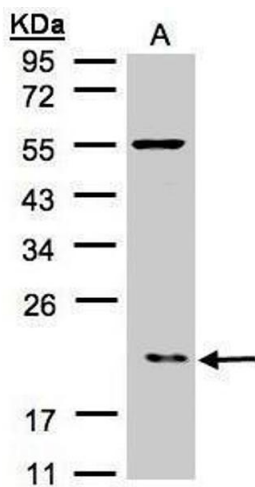
Handling

Format:	Liquid
Concentration:	0.25 mg/mL
Buffer:	0.1M Tris-Glycine (pH 7), 10 % Glycerol, 0.01 % Thimerosal
Preservative:	Thimerosal (Merthiolate)
Precaution of Use:	This product contains Thimerosal (Merthiolate): a POISONOUS AND HAZARDOUS SUBSTANCE which should be handled by trained staff only.
Storage:	4 °C, -20 °C
Storage Comment:	Store as concentrated solution. Centrifuge briefly prior to opening vial. For short-term storage (1-2 weeks), store at 4°C. For long-term storage, aliquot and store at -20°C or below. Avoid multiple freeze-thaw cycles.



Immunohistochemistry

Image 1. IHC-P Image Immunohistochemical analysis of paraffin-embedded human endometrial ovarian cancer, using ARPC3, antibody at 1:100 dilution.



Western Blotting

Image 2. WB Image Sample(30 µg of whole cell lysate) A:Raji , 12% SDS PAGE antibody diluted at 1:500