

Datasheet for ABIN2855248
anti-RAP1 antibody (Center)

5 Images

[Go to Product page](#)

Overview

Quantity:	100 µL
Target:	RAP1 (TERF2IP)
Binding Specificity:	Center
Reactivity:	Human, Mouse
Host:	Rabbit
Clonality:	Polyclonal
Conjugate:	This RAP1 antibody is un-conjugated
Application:	Western Blotting (WB), Immunofluorescence (IF), Immunoprecipitation (IP), Immunohistochemistry (Paraffin-embedded Sections) (IHC (p)), Immunocytochemistry (ICC)

Product Details

Immunogen:	Recombinant protein encompassing a sequence within the center region of human RAP1. The exact sequence is proprietary.
Isotype:	IgG
Cross-Reactivity:	Rat (Rattus), Cow (Bovine)
Cross-Reactivity (Details):	Rat (86 %), Bovine (90 %)
Characteristics:	Rabbit Polyclonal antibody to RAP1 (telomeric repeat binding factor 2, interacting protein) RAP1 antibody [N2C3]
Purification:	Purified by antigen-affinity chromatography.

Target Details

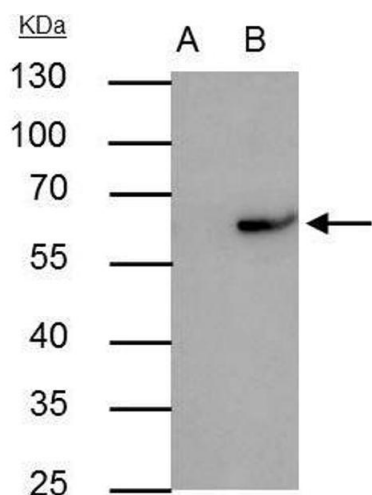
Target:	RAP1 (TERF2IP)
Alternative Name:	RAP1 (TERF2IP Products)
Background:	The gene encodes a protein that is part of a complex involved in telomere length regulation. Pseudogenes are present on chromosomes 5 and 22. Cellular Localization: Nucleus , Telomere
Molecular Weight:	44 kDa
Gene ID:	54386
Pathways:	Cell Division Cycle , Telomere Maintenance

Application Details

Application Notes:	Suggested dilution Reference ICC/IF 1:100-1:1000* IHC (Formalin-fixed paraffin-embedded sections) 1:100-1:1000* Immunoprecipitation 1:100-1:500* Western blot 1:500-1:3000* Not tested in other applications. *Optimal dilutions/concentrations should be determined by the researcher.Suggested dilutionReferenceICC/IF1:100-1:1000* IHC (Formalin-fixed paraffin-embedded sections)1:100-1:1000* Immunoprecipitation1:100-1:500* Western blot1:500-1:3000*
Comment:	Positive Control: A549 , HeLa , HepG2 , HCT116 , mouse brain
Restrictions:	For Research Use only

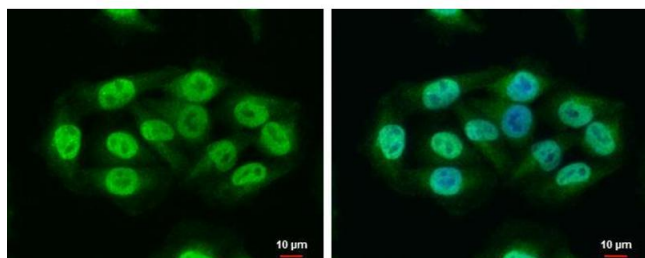
Handling

Format:	Liquid
Concentration:	0.61 mg/mL
Buffer:	1XPBS, 1 % BSA, 20 % Glycerol (pH 7). 0.01 % Thimerosal was added as a preservative.
Preservative:	Thimerosal (Merthiolate)
Precaution of Use:	This product contains Thimerosal (Merthiolate): a POISONOUS AND HAZARDOUS SUBSTANCE which should be handled by trained staff only.
Storage:	-20 °C
Storage Comment:	Keep as concentrated solution. Aliquot and store at -20°C or below. Avoid multiple freeze-thaw cycles.



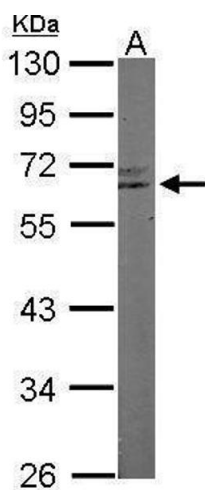
Immunoprecipitation

Image 1. IP Image RAP1 antibody immunoprecipitates RAP1 protein in IP experiments. IP Sample: HepG2 whole cell lysate/extract A : Control with 3 µg of pre-immune rabbit IgG B : Immunoprecipitation of RAP1 by 3 µg of RAP1 antibody , 10% SDS-PAGE The immunoprecipitated RAP1 protein was detected by RAP1 antibody , diluted at 1 : 1000. EasyBlot anti-rabbit IgG (HRP) was used as a secondary reagent.



Immunofluorescence

Image 2. ICC/IF Image RAP1 antibody [N2C3] detects RAP1 protein at nucleus and cytoplasm by immunofluorescent analysis. Sample: A375 cells were fixed in 4% paraformaldehyde at RT for 15 min. Green: RAP1 protein stained by RAP1 antibody [N2C3] , diluted at 1:500. Blue: Hoechst 33342 staining. Scale bar = 10 µm.



Western Blotting

Image 3. WB Image Sample (50 ug of whole cell lysate) A: Mouse brain 10% SDS PAGE antibody diluted at 1:1000

Please check the [product details page](#) for more images. Overall 5 images are available for ABIN2855248.