

Datasheet for ABIN2855250

anti-PLSCR3 antibody[Go to Product page](#)**2** Images

Overview

Quantity:	100 µL
Target:	PLSCR3
Reactivity:	Human
Host:	Rabbit
Clonality:	Polyclonal
Conjugate:	This PLSCR3 antibody is un-conjugated
Application:	Western Blotting (WB)

Product Details

Immunogen:	Recombinant protein encompassing a sequence within the center region of human PLSCR3. The exact sequence is proprietary.
Isotype:	IgG
Cross-Reactivity:	Human, Mouse
Characteristics:	Rabbit Polyclonal antibody to PLSCR3 (phospholipid scramblase 3) PLSCR3 antibody [N1C3]
Purification:	Purified by antigen-affinity chromatography.

Target Details

Target:	PLSCR3
Alternative Name:	phospholipid scramblase 3 (PLSCR3 Products)

Target Details

Background: May mediate accelerated ATP-independent bidirectional transbilayer migration of phospholipids upon binding calcium ions that results in a loss of phospholipid asymmetry in the plasma membrane. May play a central role in the initiation of fibrin clot formation, in the activation of mast cells and in the recognition of apoptotic and injured cells by the reticuloendothelial system.

Cellular Localization: Membrane, Single-pass type II membrane protein

Molecular Weight: 32 kDa

Gene ID: 57048

UniProt: [Q9NRY6](#)

Pathways: [Cellular Response to Molecule of Bacterial Origin](#), [Carbohydrate Homeostasis](#)

Application Details

Application Notes: WB: 1:500-1:3000. Optimal dilutions/concentrations should be determined by the researcher.
Not tested in other applications.

Comment: Positive Control: Mouse stomach , H1299

Restrictions: For Research Use only

Handling

Format: Liquid

Concentration: 0.77 mg/mL

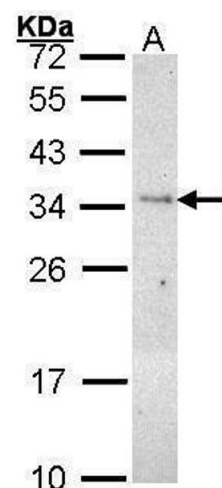
Buffer: 0.1M Tris-Glycine (pH 7), 10 % Glycerol, 0.01 % Thimerosal

Preservative: Thimerosal (Merthiolate)

Precaution of Use: This product contains Thimerosal (Merthiolate): a POISONOUS AND HAZARDOUS SUBSTANCE which should be handled by trained staff only.

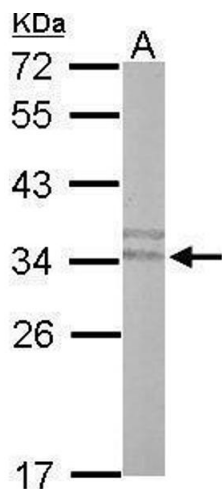
Storage: 4 °C,-20 °C

Storage Comment: Store as concentrated solution. Centrifuge briefly prior to opening vial. For short-term storage (1-2 weeks), store at 4°C. For long-term storage, aliquot and store at -20°C or below. Avoid multiple freeze-thaw cycles.



Western Blotting

Image 1. WB Image Sample (30 ug of whole cell lysate) A:
H1299 12% SDS PAGE antibody diluted at 1:1000



Western Blotting

Image 2. WB Image Sample (50 ug of whole cell lysate) A:
mouse stomach 12% SDS PAGE antibody diluted at 1:500