

Datasheet for ABIN2855251
anti-HAX1 antibody

5 Images



[Go to Product page](#)

Overview

Quantity:	100 µL
Target:	HAX1
Reactivity:	Human
Host:	Rabbit
Clonality:	Polyclonal
Conjugate:	This HAX1 antibody is un-conjugated
Application:	Western Blotting (WB), Immunofluorescence (IF), Immunohistochemistry (Paraffin-embedded Sections) (IHC (p)), Immunocytochemistry (ICC)

Product Details

Immunogen:	Recombinant protein encompassing a sequence within the center region of human HAX1. The exact sequence is proprietary.
Isotype:	IgG
Cross-Reactivity:	Human, Mouse, Rat
Characteristics:	Rabbit Polyclonal antibody to HAX1 (HCLS1 associated protein X-1) HAX1 antibody
Purification:	Purified by antigen-affinity chromatography.

Target Details

Target:	HAX1
Alternative Name:	HCLS1 associated protein X-1 (HAX1 Products)

Target Details

Background:	<p>The protein encoded by this gene is known to associate with hematopoietic cell-specific Lyn substrate 1, a substrate of Src family tyrosine kinases. It also interacts with the product of the polycystic kidney disease 2 gene, mutations in which are associated with autosomal-dominant polycystic kidney disease, and with the F-actin-binding protein, cortactin. It was earlier thought that this gene product is mainly localized in the mitochondria, however, recent studies indicate it to be localized in the cell body. Mutations in this gene result in autosomal recessive severe congenital neutropenia, also known as Kostmann disease. Two transcript variants encoding different isoforms have been found for this gene.</p> <p>Cellular Localization: Mitochondrion , Endoplasmic reticulum , Nucleus membrane</p>
Molecular Weight:	32 kDa
Gene ID:	10456
UniProt:	O00165
Pathways:	Regulation of Actin Filament Polymerization

Application Details

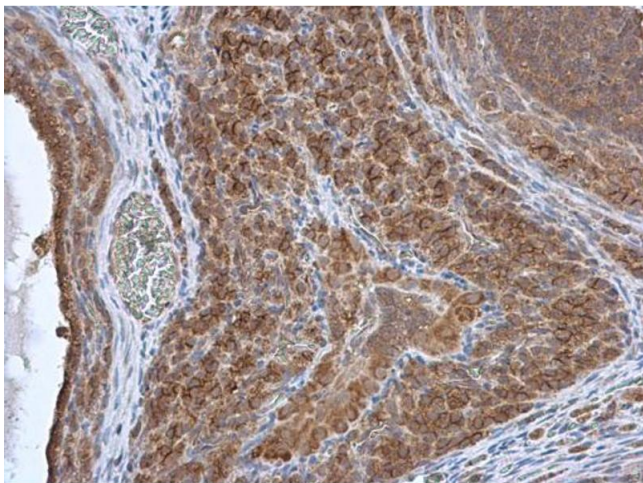
Application Notes:	WB: 1:500-1:3000. ICC/IF: 1:100-1:1000. IHC-P: 1:100-1:1000. Optimal dilutions/concentrations should be determined by the researcher. Not tested in other applications.
Comment:	Positive Control: Molt-4 , Raji
Restrictions:	For Research Use only

Handling

Format:	Liquid
Concentration:	2.87 mg/mL
Buffer:	1XPBS pH 7, 20 % Glycerol, 0.025 % ProClin 300
Preservative:	ProClin
Precaution of Use:	This product contains ProClin: a POISONOUS AND HAZARDOUS SUBSTANCE which should be handled by trained staff only.
Storage:	4 °C,-20 °C
Storage Comment:	Store as concentrated solution. Centrifuge briefly prior to opening vial. For short-term storage (1-2 weeks), store at 4°C. For long-term storage, aliquot and store at -20°C or below. Avoid

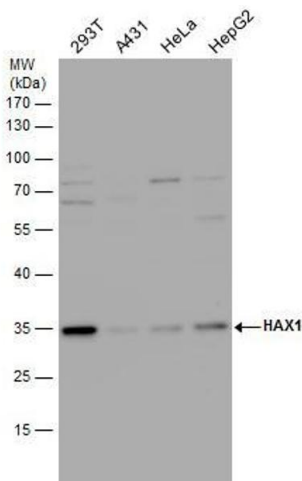
multiple freeze-thaw cycles.

Images



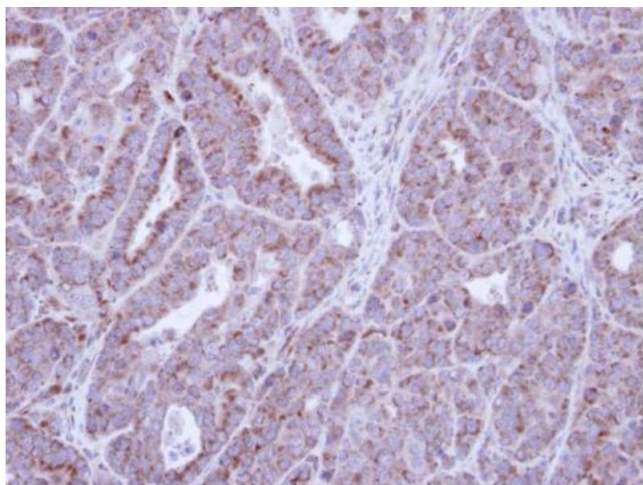
Immunohistochemistry

Image 1. IHC-P Image HAX1 antibody detects HAX1 protein at cytoplasm in rat ovary by immunohistochemical analysis. Sample: Paraffin-embedded rat ovary. HAX1 antibody , diluted at 1:500.



Western Blotting

Image 2. WB Image HAX1 antibody detects HAX1 protein by western blot analysis. Various whole cell extracts (30 µg) were separated by 12% SDS-PAGE, and the membrane was blotted with HAX1 antibody , diluted by 1:1000.



Immunohistochemistry

Image 3. IHC-P Image Immunohistochemical analysis of paraffin-embedded NCIN87 Xenograft , using HAX1, antibody at 1:100 dilution.

Please check the [product details page](#) for more images. Overall 5 images are available for ABIN2855251.