

Datasheet for ABIN2855252

## anti-Aspartyl Aminopeptidase antibody

### 2 Images



[Go to Product page](#)

### Overview

Quantity:	100 µL
Target:	Aspartyl Aminopeptidase (DNPEP)
Reactivity:	Human
Host:	Rabbit
Clonality:	Polyclonal
Conjugate:	This Aspartyl Aminopeptidase antibody is un-conjugated
Application:	Western Blotting (WB), Immunohistochemistry (Paraffin-embedded Sections) (IHC (p))

### Product Details

Immunogen:	Recombinant protein encompassing a sequence within the center region of human Aspartyl aminopeptidase. The exact sequence is proprietary.
Isotype:	IgG
Cross-Reactivity:	Human
Characteristics:	Rabbit polyclonal antibody to Aspartyl aminopeptidase (aspartyl aminopeptidase) Aspartyl aminopeptidase antibody [N1N3]
Purification:	Purified by antigen-affinity chromatography.

### Target Details

Target:	Aspartyl Aminopeptidase (DNPEP)
Alternative Name:	aspartyl aminopeptidase ( <a href="#">DNPEP Products</a> )

## Target Details

---

**Background:** The protein encoded by this gene is an aminopeptidase which prefers acidic amino acids, and specifically favors aspartic acid over glutamic acid. It is thought to be a cytosolic protein involved in general metabolism of intracellular proteins.

Cellular Localization: Cytoplasm

---

**Molecular Weight:** 52 kDa

---

**Gene ID:** 23549

---

**UniProt:** [Q9ULA0](#)

---

## Application Details

---

**Application Notes:** WB: 1:500-1:3000. IHC-P: 1:100-1:1000. Optimal dilutions/concentrations should be determined by the researcher. Not tested in other applications.

---

**Comment:** Positive Control: H1299

---

**Restrictions:** For Research Use only

---

## Handling

---

**Format:** Liquid

---

**Concentration:** 0.54 mg/mL

---

**Buffer:** 0.1M Tris-Glycine ( pH 7), 10 % Glycerol, 0.01 % Thimerosal

---

**Preservative:** Thimerosal (Merthiolate)

---

**Precaution of Use:** This product contains Thimerosal (Merthiolate): a POISONOUS AND HAZARDOUS SUBSTANCE which should be handled by trained staff only.

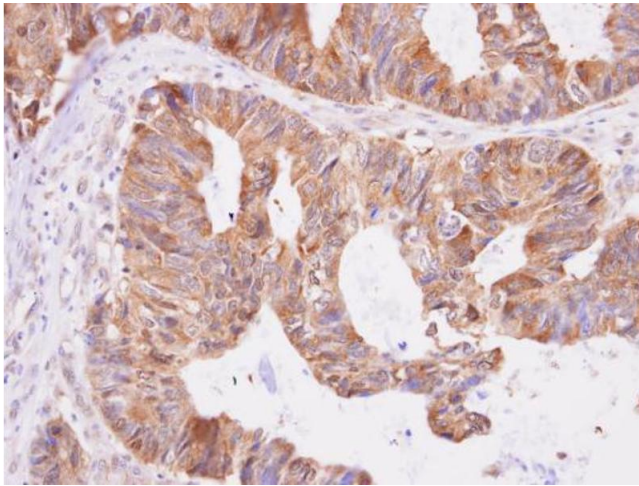
---

**Storage:** 4 °C,-20 °C

---

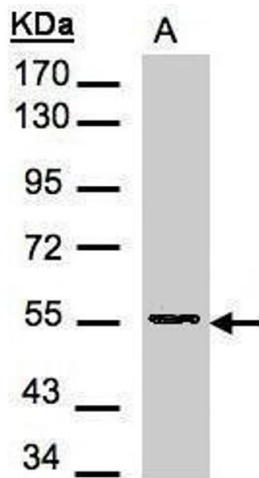
**Storage Comment:** Store as concentrated solution. Centrifuge briefly prior to opening vial. For short-term storage (1-2 weeks), store at 4°C. For long-term storage, aliquot and store at -20°C or below. Avoid multiple freeze-thaw cycles.

---



### Immunohistochemistry

**Image 1.** IHC-P Image Aspartyl aminopeptidase antibody [N1N3] detects Aspartyl aminopeptidase protein at cytoplasm on human colon carcinoma by immunohistochemical analysis. Sample: Paraffin-embedded colon carcinoma. Aspartyl aminopeptidase antibody [N1N3], dilutio



### Western Blotting

**Image 2.** WB Image Sample(30 µg of whole cell lysate) A:H1299 7.5% SDS PAGE antibody diluted at 1:500