

Datasheet for ABIN2855255  
**anti-Peripherin antibody**

## 2 Images

[Go to Product page](#)

## Overview

Quantity:	100 µL
Target:	Peripherin (PRPH)
Reactivity:	Human
Host:	Rabbit
Clonality:	Polyclonal
Conjugate:	This Peripherin antibody is un-conjugated
Application:	Western Blotting (WB), Immunofluorescence (IF), Immunocytochemistry (ICC), Immunohistochemistry (Paraffin-embedded Sections) (IHC (p))

## Product Details

Immunogen:	Recombinant protein encompassing a sequence within the center region of human Peripherin. The exact sequence is proprietary.
Isotype:	IgG
Cross-Reactivity:	Human
Characteristics:	Rabbit Polyclonal antibody to Peripherin (peripherin) Peripherin antibody
Purification:	Purified by antigen-affinity chromatography.

## Target Details

Target:	Peripherin (PRPH)
Alternative Name:	peripherin ( <a href="#">PRPH Products</a> )

## Target Details

**Background:** This gene encodes a cytoskeletal protein found in neurons of the peripheral nervous system. The encoded protein is a type III intermediate filament protein with homology to other cytoskeletal proteins such as desmin, and is a different protein than the peripherin found in photoreceptors. Mutations in this gene have been associated with susceptibility to amyotrophic lateral sclerosis.

**Molecular Weight:** 54 kDa

**Gene ID:** 5630

**UniProt:** [P41219](#)

## Application Details

**Application Notes:** WB: 1:500-1:3000. IHC-P: 1:100-1:1000. Optimal dilutions/concentrations should be determined by the researcher. Not tested in other applications.

**Comment:** Positive Control: PC-3

**Restrictions:** For Research Use only

## Handling

**Format:** Liquid

**Concentration:** 1 mg/mL

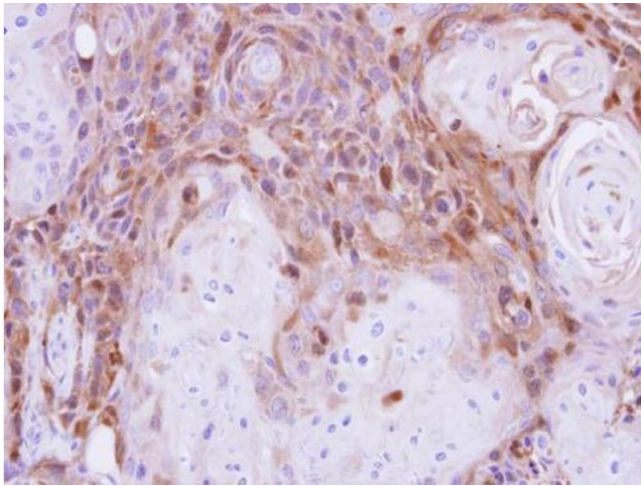
**Buffer:** 1XPBS ( pH 7), 40 % Glycerol, 0.01 % Thimerosal

**Preservative:** Thimerosal (Merthiolate)

**Precaution of Use:** This product contains Thimerosal (Merthiolate): a POISONOUS AND HAZARDOUS SUBSTANCE which should be handled by trained staff only.

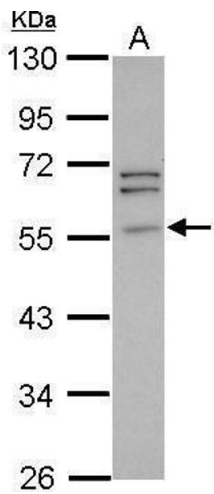
**Storage:** 4 °C,-20 °C

**Storage Comment:** Store as concentrated solution. Centrifuge briefly prior to opening vial. For short-term storage (1-2 weeks), store at 4°C. For long-term storage, aliquot and store at -20°C or below. Avoid multiple freeze-thaw cycles.



### Immunohistochemistry

**Image 1.** IHC-P Image Peripherin antibody detects PRPH protein at cytosol on Ca922 xenograft by immunohistochemical analysis. Sample: Paraffin-embedded Ca922 xenograft. Peripherin antibody , dilution: 1:500.



### Western Blotting

**Image 2.** WB Image Sample (30 ug of whole cell lysate) A: PC-3 10% SDS PAGE antibody diluted at 1:1000