

Datasheet for ABIN2855257

anti-C1D antibody[Go to Product page](#)**1** Image

Overview

Quantity:	100 µL
Target:	C1D
Reactivity:	Human
Host:	Rabbit
Clonality:	Polyclonal
Conjugate:	This C1D antibody is un-conjugated
Application:	Western Blotting (WB)

Product Details

Immunogen:	Recombinant protein encompassing a sequence within the center region of human C1D. The exact sequence is proprietary.
Isotype:	IgG
Cross-Reactivity:	Human
Characteristics:	Rabbit Polyclonal antibody to C1D (C1D nuclear receptor corepressor) C1D antibody
Purification:	Purified by antigen-affinity chromatography.

Target Details

Target:	C1D
Alternative Name:	C1D nuclear receptor corepressor (C1D Products)

Target Details

Background: The protein encoded by this gene is a DNA binding and apoptosis-inducing protein and is localized in the nucleus. It is also a Rac3-interacting protein which acts as a corepressor for the thyroid hormone receptor. This protein is thought to regulate TRAX/Translin complex formation. Several alternatively spliced transcript variants of this gene have been described, but the full length nature of some of these variants has not been determined.

Cellular Localization: Cytoplasm , Nucleus , nucleolus

Molecular Weight: 16 kDa

Gene ID: 10438

UniProt: [Q13901](#)

Application Details

Application Notes: WB: 1:500-1:3000. Optimal dilutions/concentrations should be determined by the researcher.
Not tested in other applications.

Comment: Positive Control: Raji

Restrictions: For Research Use only

Handling

Format: Liquid

Concentration: 1 mg/mL

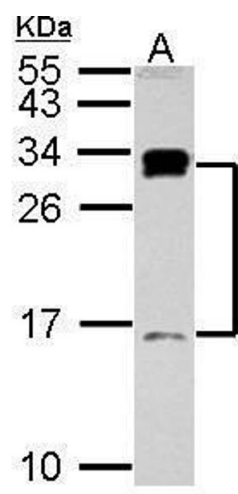
Buffer: 1XPBS (pH 7), 20 % Glycerol, 0.01 % Thimerosal

Preservative: Thimerosal (Merthiolate)

Precaution of Use: This product contains Thimerosal (Merthiolate): a POISONOUS AND HAZARDOUS SUBSTANCE which should be handled by trained staff only.

Storage: 4 °C, -20 °C

Storage Comment: Store as concentrated solution. Centrifuge briefly prior to opening vial. For short-term storage (1-2 weeks), store at 4°C. For long-term storage, aliquot and store at -20°C or below. Avoid multiple freeze-thaw cycles.



Western Blotting

Image 1. WB Image Sample (30 ug of whole cell lysate) A:
Raji 15% SDS PAGE antibody diluted at 1:1000