

Datasheet for ABIN2855258

**anti-TRAP1 antibody****6** Images[Go to Product page](#)

## Overview

Quantity:	100 µL
Target:	TRAP1
Reactivity:	Human
Host:	Rabbit
Clonality:	Polyclonal
Conjugate:	This TRAP1 antibody is un-conjugated
Application:	Western Blotting (WB), Immunofluorescence (IF), Immunocytochemistry (ICC), Immunohistochemistry (Paraffin-embedded Sections) (IHC (p))

## Product Details

Immunogen:	Recombinant protein encompassing a sequence within the center region of human TRAP1. The exact sequence is proprietary.
Isotype:	IgG
Cross-Reactivity:	Human, Mouse
Characteristics:	Rabbit Polyclonal antibody to TRAP1 (TNF receptor-associated protein 1) TRAP1 antibody
Purification:	Purified by antigen-affinity chromatography.
Grade:	KO Validated

## Target Details

Target:	TRAP1
---------	-------

## Target Details

Alternative Name:	TNF receptor associated protein 1 ( <a href="#">TRAP1 Products</a> )
Background:	<p>HSP90 proteins are highly conserved molecular chaperones that have key roles in signal transduction, protein folding, protein degradation, and morphologic evolution. HSP90 proteins normally associate with other cochaperones and play important roles in folding newly synthesized proteins or stabilizing and refolding denatured proteins after stress. TRAP1 is a mitochondrial HSP90 protein. Other HSP90 proteins are found in cytosol (see HSP90AA1, MIM 140571) and endoplasmic reticulum (HSP90B1, MIM 191175) (Chen et al., 2005 [PubMed 16269234]).[supplied by OMIM]</p> <p>Cellular Localization: Mitochondrion</p>
Molecular Weight:	80 kDa
Gene ID:	10131
UniProt:	<a href="#">Q12931</a>

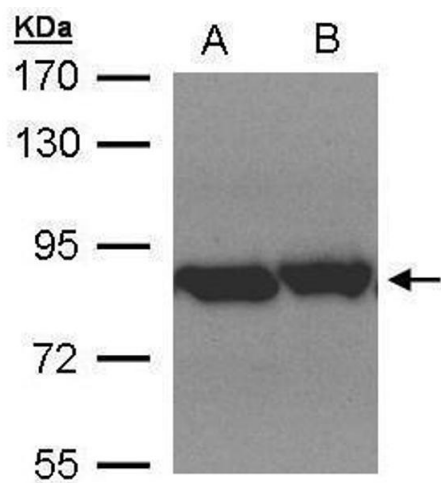
## Application Details

Application Notes:	WB: 1:500-1:3000. ICC/IF: 1:100-1:1000. IHC-P: 1:100-1:1000. Optimal dilutions/concentrations should be determined by the researcher. Not tested in other applications.
Comment:	<p>Positive Control: HepG2 , Molt-4 , 293T</p> <p>Validation: KO/KD, Orthogonal</p>
Restrictions:	For Research Use only

## Handling

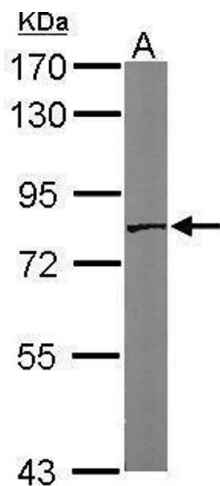
Format:	Liquid
Concentration:	0.66 mg/mL
Buffer:	1XPBS ( pH 7), 10 % Glycerol, 0.01 % Thimerosal
Preservative:	Thimerosal (Merthiolate)
Precaution of Use:	This product contains Thimerosal (Merthiolate): a POISONOUS AND HAZARDOUS SUBSTANCE which should be handled by trained staff only.
Storage:	4 °C,-20 °C
Storage Comment:	Store as concentrated solution. Centrifuge briefly prior to opening vial. For short-term storage (1-2 weeks), store at 4°C. For long-term storage, aliquot and store at -20°C or below. Avoid

multiple freeze-thaw cycles.



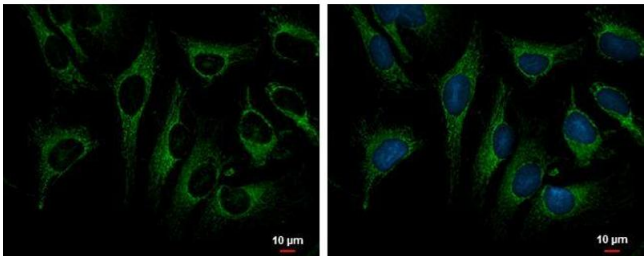
**Western Blotting**

**Image 1.** WB Image Sample(30 µg of whole cell lysate)  
A:Hep G2, B:MOLT4, 7.5% SDS PAGE antibody diluted at 1:1500



**Western Blotting**

**Image 2.** WB Image Sample (50 ug of whole cell lysate) A:  
Mouse brain 7.5% SDS PAGE antibody diluted at 1:1000



**Immunofluorescence**

**Image 3.** ICC/IF Image TRAP1 antibody detects TRAP1 protein at mitochondria by immunofluorescent analysis. Sample: HeLa cells were fixed in ice-cold MeOH for 5 min. Green: TRAP1 protein stained by TRAP1 antibody , diluted at 1:1000. Blue: Hoechst 33342 staining. Scale bar = 10 µm.

Please check the [product details page](#) for more images. Overall 6 images are available for ABIN2855258.