



[Go to Product page](#)

Datasheet for ABIN2855260

anti-Malectin antibody

2 Images

Overview

Quantity:	100 µL
Target:	Malectin (MLEC)
Reactivity:	Human
Host:	Rabbit
Clonality:	Polyclonal
Conjugate:	This Malectin antibody is un-conjugated
Application:	Western Blotting (WB), Immunohistochemistry (Paraffin-embedded Sections) (IHC (p))

Product Details

Immunogen:	Recombinant protein encompassing a sequence within the center region of human Malectin. The exact sequence is proprietary.
Isotype:	IgG
Cross-Reactivity:	Human
Characteristics:	Rabbit Polyclonal antibody to Malectin (malectin) Malectin antibody
Purification:	Purified by antigen-affinity chromatography.

Target Details

Target:	Malectin (MLEC)
Alternative Name:	malectin (MLEC Products)

Target Details

Background: Carbohydrate-binding protein with a strong ligand preference for Glc2-N-glycan. May play a role in the early steps of protein N-glycosylation.

Cellular Localization: Endoplasmic reticulum membrane, Single-pass type I membrane protein

Molecular Weight: 32 kDa

Gene ID: 9761

UniProt: [Q14165](#)

Application Details

Application Notes: WB: 1:100-1:1000. IHC-P: 1:100-1:1000. Optimal dilutions/concentrations should be determined by the researcher. Not tested in other applications.

Comment: Positive Control: Raji

Restrictions: For Research Use only

Handling

Format: Liquid

Concentration: 0.45 mg/mL

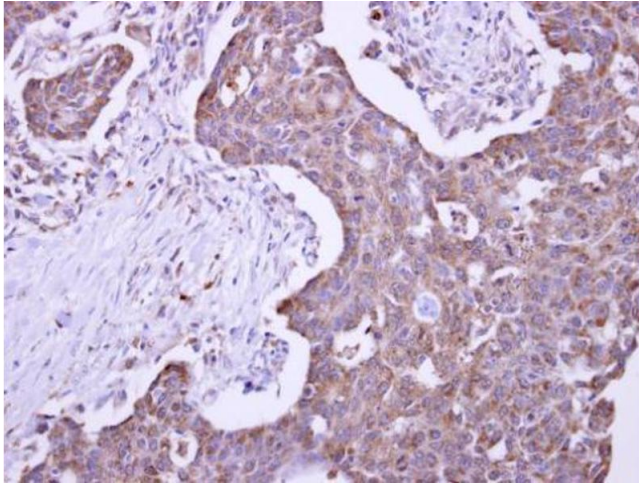
Buffer: 0.1M Tris-Glycine (pH 7), 10 % Glycerol, 0.01 % Thimerosal

Preservative: Thimerosal (Merthiolate)

Precaution of Use: This product contains Thimerosal (Merthiolate): a POISONOUS AND HAZARDOUS SUBSTANCE which should be handled by trained staff only.

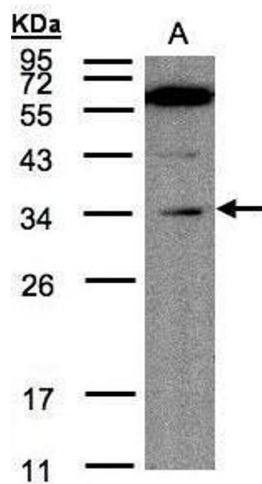
Storage: 4 °C, -20 °C

Storage Comment: Store as concentrated solution. Centrifuge briefly prior to opening vial. For short-term storage (1-2 weeks), store at 4°C. For long-term storage, aliquot and store at -20°C or below. Avoid multiple freeze-thaw cycles.



Immunohistochemistry

Image 1. IHC-P Image Malectin antibody detects KIAA0152 protein at cytosol on human colon carcinoma by immunohistochemical analysis. Sample: Paraffin-embedded colon carcinoma. Malectin antibody , dilution: 1:500.



Western Blotting

Image 2. WB Image Sample(30 µg of whole cell lysate) A:Raji , 12% SDS PAGE antibody diluted at 1:200