

Datasheet for ABIN2855261
anti-MCL-1 antibody (Center)

5 Images

2 Publications

[Go to Product page](#)

Overview

Quantity:	100 µL
Target:	MCL-1 (MCL1)
Binding Specificity:	Center
Reactivity:	Human
Host:	Rabbit
Clonality:	Polyclonal
Conjugate:	This MCL-1 antibody is un-conjugated
Application:	Western Blotting (WB), Immunofluorescence (IF), Immunohistochemistry (Paraffin-embedded Sections) (IHC (p)), Immunocytochemistry (ICC)

Product Details

Immunogen:	Recombinant protein encompassing a sequence within the center region of human MCL1. The exact sequence is proprietary.
Isotype:	IgG
Characteristics:	Rabbit Polyclonal antibody to MCL1 (myeloid cell leukemia sequence 1 (BCL2-related)) MCL1 antibody
Purification:	Purified by antigen-affinity chromatography.

Target Details

Target:	MCL-1 (MCL1)
Alternative Name:	MCL1 (MCL1 Products)

Target Details

Background:	<p>The protein encoded by this gene belongs to the Bcl-2 family. Alternative splicing occurs at this locus and two transcript variants encoding distinct isoforms have been identified. The longer gene product (isoform 1) enhances cell survival by inhibiting apoptosis while the alternatively spliced shorter gene product (isoform 2) promotes apoptosis and is death-inducing.</p> <p>Cellular Localization: Membrane, Single-pass membrane protein (Potential) , Cytoplasm , Mitochondrion , Nucleus , nucleoplasm</p>
Molecular Weight:	37 kDa
Gene ID:	4170
Pathways:	MAPK Signaling

Application Details

Application Notes:	<p>Suggested dilution Reference ICC/IF 1:100-1:1000* IHC (Formalin-fixed paraffin-embedded sections) 1:100-1:1000* Western blot 1:500-1:3000* Not tested in other applications. *Optimal dilutions/concentrations should be determined by the researcher.Suggested dilutionReferenceICC/IF1:100-1:1000* IHC (Formalin-fixed paraffin-embedded sections)1:100-1:1000* Western blot1:500-1:3000*</p>
Comment:	Positive Control: Raji
Restrictions:	For Research Use only

Handling

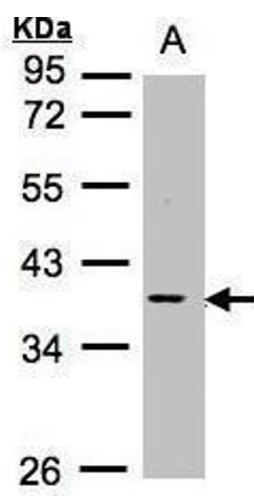
Format:	Liquid
Concentration:	0.89 mg/mL
Buffer:	0.1M Tris, 0.1M Glycine, 10 % Glycerol (pH 7). 0.01 % Thimerosal was added as a preservative.
Preservative:	Thimerosal (Merthiolate)
Precaution of Use:	This product contains Thimerosal (Merthiolate): a POISONOUS AND HAZARDOUS SUBSTANCE which should be handled by trained staff only.
Storage:	-20 °C
Storage Comment:	Keep as concentrated solution. Aliquot and store at -20°C or below. Avoid multiple freeze-thaw cycles.

Publications

Product cited in: Takino, Sato, Nagamine, Hori: "The inhibition of Bax activation-induced apoptosis by RasGRP2 via R-Ras-PI3K-Akt signaling pathway in the endothelial cells." in: **Scientific reports**, Vol. 9, Issue 1, pp. 16717, (2019) ([PubMed](#)).

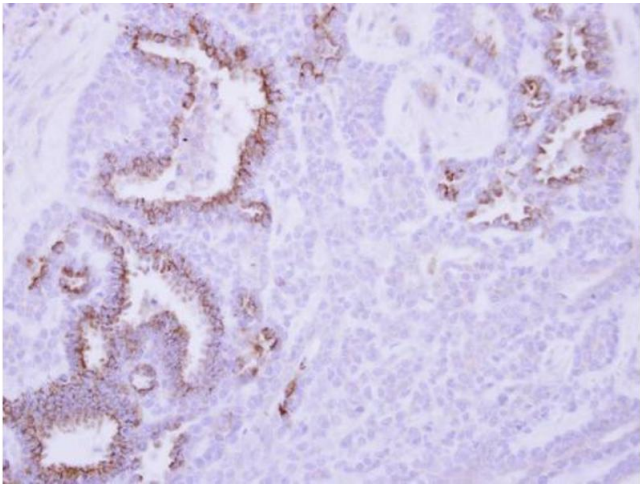
Peng, Cheng, Hsu, Wu, Kuo, Liou, Chang, Jin, Shiah: "MPT0B098, a Microtubule Inhibitor, Suppresses JAK2/STAT3 Signaling Pathway through Modulation of SOCS3 Stability in Oral Squamous Cell Carcinoma." in: **PLoS ONE**, Vol. 11, Issue 7, pp. e0158440, (2017) ([PubMed](#)).

Images



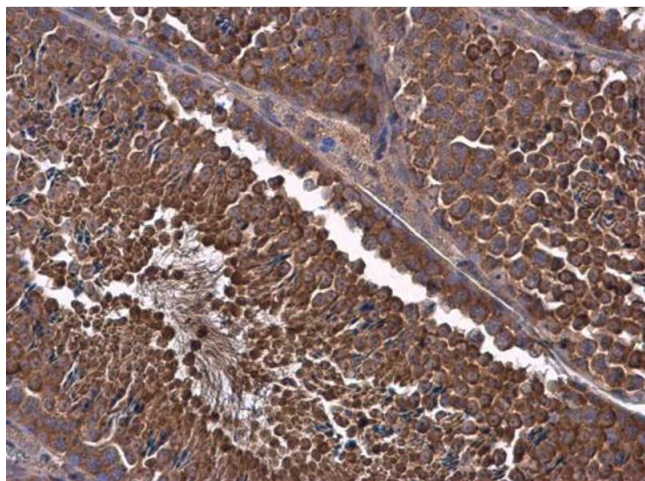
Western Blotting

Image 1. WB Image Sample (30µg whole cell lysate) A:Raji , 10% SDS PAGE antibody diluted at 1:1000



Immunohistochemistry

Image 2. IHC-P Image Immunohistochemical analysis of paraffin-embedded human breast cancer, using MCL1, antibody at 1:250 dilution.



Immunohistochemistry

Image 3. IHC-P Image MCL1 antibody detects MCL1 protein at cytoplasm in mouse testis by immunohistochemical analysis. Sample: Paraffin-embedded mouse testis. MCL1 antibody , diluted at 1:500.

Please check the [product details page](#) for more images. Overall 5 images are available for ABIN2855261.