

Datasheet for ABIN2855263
anti-PTOV1 antibody (Center)[Go to Product page](#)

1 Image

Overview

Quantity:	100 µL
Target:	PTOV1
Binding Specificity:	Center
Reactivity:	Human
Host:	Rabbit
Clonality:	Polyclonal
Conjugate:	This PTOV1 antibody is un-conjugated
Application:	Immunofluorescence (IF), Immunocytochemistry (ICC)

Product Details

Immunogen:	Recombinant protein encompassing a sequence within the center region of human PTOV1. The exact sequence is proprietary.
Isotype:	IgG
Characteristics:	Rabbit Polyclonal antibody to PTOV1 (prostate tumor overexpressed 1) PTOV1 antibody
Purification:	Purified by antigen-affinity chromatography.

Target Details

Target:	PTOV1
Alternative Name:	PTOV1 (PTOV1 Products)

Target Details

Background: May activate transcription. Required for nuclear translocation of FLOT1. Promotes cell proliferation.

Cellular Localization: Cell membrane , Cytoplasm , perinuclear region , Nucleus

Molecular Weight: 47 kDa

Gene ID: 53635

Application Details

Application Notes: Suggested dilution Reference ICC/IF 1:100-1:1000* Not tested in other applications. *Optimal dilutions/concentrations should be determined by the researcher.Suggested dilutionReferenceICC/IF1:100-1:1000*

Restrictions: For Research Use only

Handling

Format: Liquid

Concentration: 1 mg/mL

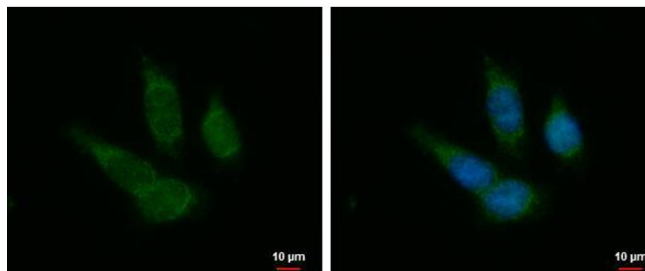
Buffer: 1XPBS, 20 % Glycerol (pH 7). 0.01 % Thimerosal was added as a preservative.

Preservative: Thimerosal (Merthiolate)

Precaution of Use: This product contains Thimerosal (Merthiolate): a POISONOUS AND HAZARDOUS SUBSTANCE which should be handled by trained staff only.

Storage: -20 °C

Storage Comment: Keep as concentrated solution. Aliquot and store at -20°C or below. Avoid multiple freeze-thaw cycles.



Immunofluorescence

Image 1. ICC/IF Image PTOV1 antibody detects PTOV1 protein at cytoplasm by immunofluorescent analysis. Sample: HCT116 cells were fixed in 4% paraformaldehyde at RT for 15 min. Green: PTOV1 protein stained by PTOV1 antibody, diluted at 1:500. Blue: Hoechst 33342 staining.