

Datasheet for ABIN2855264  
**anti-RUVBL2 antibody (C-Term)**[Go to Product page](#)

## 2 Images

## Overview

Quantity:	100 µL
Target:	RUVBL2
Binding Specificity:	C-Term
Reactivity:	Human
Host:	Rabbit
Clonality:	Polyclonal
Conjugate:	This RUVBL2 antibody is un-conjugated
Application:	Western Blotting (WB), Immunohistochemistry (Paraffin-embedded Sections) (IHC (p))

## Product Details

Immunogen:	Recombinant protein encompassing a sequence within the C-terminus region of human RUVBL2. The exact sequence is proprietary.
Isotype:	IgG
Cross-Reactivity:	Rhesus Monkey
Cross-Reactivity (Details):	Rhesus Monkey (100 %)
Characteristics:	Rabbit Polyclonal antibody to RUVBL2 (RuvB-like 2 (E. coli)) RUVBL2 antibody [C1C3]
Purification:	Purified by antigen-affinity chromatography.

## Target Details

Target:	RUVBL2
Alternative Name:	RUVBL2 ( <a href="#">RUVBL2 Products</a> )
Background:	<p>This gene encodes the second human homologue of the bacterial RuvB gene. Bacterial RuvB protein is a DNA helicase essential for homologous recombination and DNA double-strand break repair. Functional analysis showed that this gene product has both ATPase and DNA helicase activities. This gene is physically linked to the CGB/LHB gene cluster on chromosome 19q13.3, and is very close (55 nt) to the LHB gene, in the opposite orientation.</p> <p>Cellular Localization: Nucleus matrix , Nucleus , nucleoplasm , Cytoplasm , Membrane</p>
Molecular Weight:	51 kDa
Gene ID:	10856
Pathways:	<a href="#">Telomere Maintenance</a>

## Application Details

Application Notes:	<p>Suggested dilution Reference IHC (Formalin-fixed paraffin-embedded sections) 1:100-1:1000* Western blot 1:1000-1:10000* Not tested in other applications. *Optimal dilutions/concentrations should be determined by the researcher.Suggested dilutionReferenceIHC (Formalin-fixed paraffin-embedded sections)1:100-1:1000* Western blot1:1000-1:10000*</p>
Comment:	Positive Control: 293T , A431 , H1299 , HeLa , HepG2 , Molt-4 , Raji
Restrictions:	For Research Use only

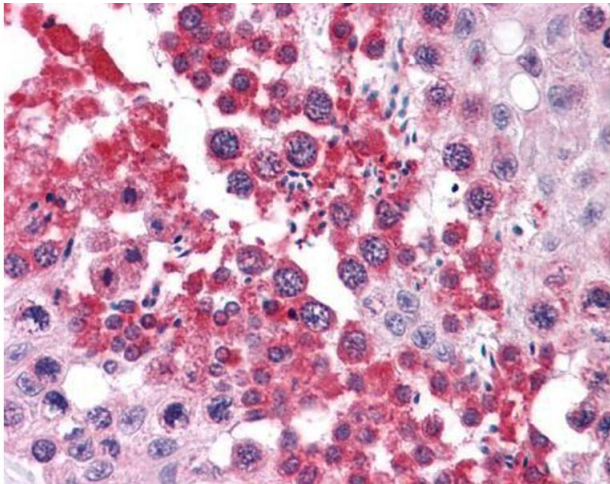
## Handling

Format:	Liquid
Concentration:	0.94 mg/mL
Buffer:	0.1M Tris, 0.1M Glycine, 10 % Glycerol ( pH 7). 0.01 % Thimerosal was added as a preservative.
Preservative:	Thimerosal (Merthiolate)
Precaution of Use:	This product contains Thimerosal (Merthiolate): a POISONOUS AND HAZARDOUS SUBSTANCE which should be handled by trained staff only.
Storage:	-20 °C

Handling

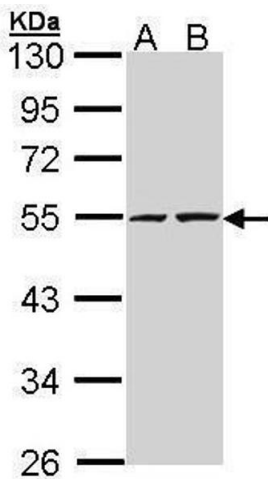
Storage Comment: Keep as concentrated solution. Aliquot and store at -20°C or below. Avoid multiple freeze-thaw cycles.

Images



Immunohistochemistry

**Image 1.** IHC-P Image Immunohistochemical analysis of paraffin-embedded human testis, using RUVBL2, antibody(10 µg/ml).



Western Blotting

**Image 2.** WB Image Sample (30 ug of whole cell lysate) A: A431 , B: H1299 10% SDS PAGE antibody diluted at 1:5000