

Datasheet for ABIN2855267
anti-COBRA1 antibody (Center)

5 Images

[Go to Product page](#)

Overview

Quantity:	100 µL
Target:	COBRA1
Binding Specificity:	Center
Reactivity:	Human, Mouse
Host:	Rabbit
Clonality:	Polyclonal
Conjugate:	This COBRA1 antibody is un-conjugated
Application:	Western Blotting (WB), Immunofluorescence (IF), Immunohistochemistry (Paraffin-embedded Sections) (IHC (p)), Immunocytochemistry (ICC)

Product Details

Immunogen:	Recombinant protein encompassing a sequence within the center region of human COBRA1. The exact sequence is proprietary.
Isotype:	IgG
Characteristics:	Rabbit Polyclonal antibody to COBRA1 (cofactor of BRCA1) COBRA1 antibody
Purification:	Purified by antigen-affinity chromatography.

Target Details

Target:	COBRA1
Alternative Name:	COBRA1 (COBRA1 Products)

Target Details

Background: NELFB is a subunit of negative elongation factor (NELF), which also includes NELFA (WHSC2, MIM 606026), either NELFC or NELFD (TH1L, MIM 605297), and NELFE (RDBP, MIM 154040). NELF acts with DRB sensitivity-inducing factor (DSIF), a heterodimer of SPT4 (SUPT4H1, MIM 603555) and SPT5 (SUPT5H, MIM 602102), to cause transcriptional pausing of RNA polymerase II (see MIM 180660) (Narita et al., 2003 [PubMed 12612062]).[supplied by OMIM]

Cellular Localization: Nucleus

Molecular Weight: 66 kDa

Gene ID: 25920

Application Details

Application Notes: Suggested dilution Reference ICC/IF 1:100-1:1000* IHC (Formalin-fixed paraffin-embedded sections) 1:100-1:1000* Western blot 1:500-1:3000* Not tested in other applications. *Optimal dilutions/concentrations should be determined by the researcher.Suggested dilutionReferenceICC/IF1:100-1:1000* IHC (Formalin-fixed paraffin-embedded sections)1:100-1:1000* Western blot1:500-1:3000*

Comment: Positive Control: H1299

Restrictions: For Research Use only

Handling

Format: Liquid

Concentration: 1 mg/mL

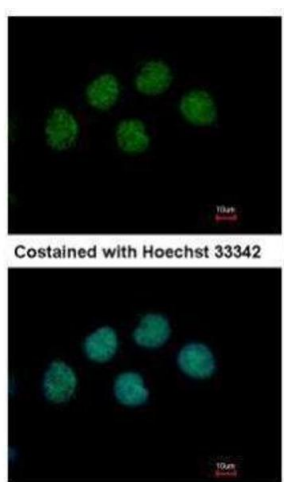
Buffer: 1XPBS, 40 % Glycerol (pH 7). 0.01 % Thimerosal was added as a preservative.

Preservative: Thimerosal (Merthiolate)

Precaution of Use: This product contains Thimerosal (Merthiolate): a POISONOUS AND HAZARDOUS SUBSTANCE which should be handled by trained staff only.

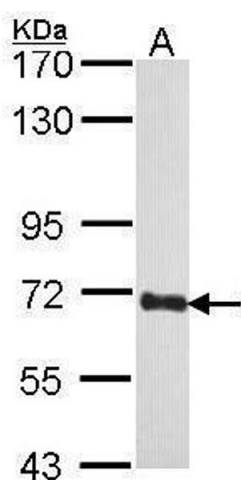
Storage: -20 °C

Storage Comment: Keep as concentrated solution. Aliquot and store at -20°C or below. Avoid multiple freeze-thaw cycles.



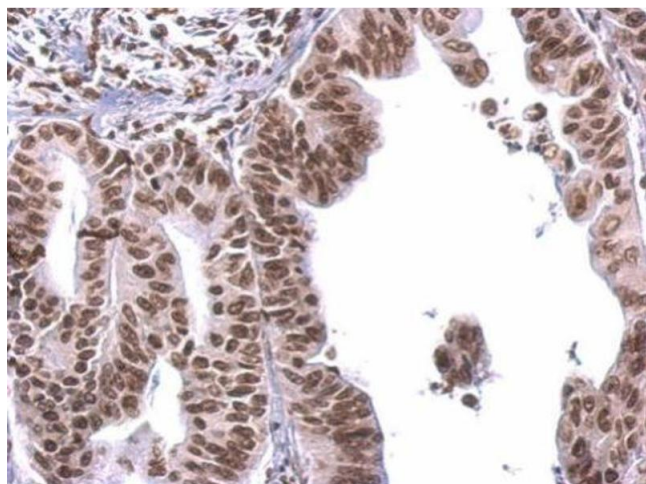
Immunofluorescence

Image 1. ICC/IF Image Immunofluorescence analysis of methanol-fixed H1299, using COBRA1, antibody at 1:500 dilution.



Western Blotting

Image 2. WB Image Sample (30 ug of whole cell lysate) A: H1299 5% SDS PAGE diluted at 1:1000



Immunohistochemistry

Image 3. IHC-P Image COBRA1 antibody detects COBRA1 protein at nucleus on human gastric cancer by immunohistochemical analysis. Sample: Paraffin-embedded gastric cancer. COBRA1 antibody, dilution: 1:500.

Please check the [product details page](#) for more images. Overall 5 images are available for ABIN2855267.