

Datasheet for ABIN2855277  
**anti-SFRS17A antibody (C-Term)**

## 2 Images

[Go to Product page](#)

## Overview

Quantity:	100 µL
Target:	SFRS17A (AKAP17A)
Binding Specificity:	C-Term
Reactivity:	Human
Host:	Rabbit
Clonality:	Polyclonal
Conjugate:	This SFRS17A antibody is un-conjugated
Application:	Western Blotting (WB), Immunohistochemistry (Paraffin-embedded Sections) (IHC (p))

## Product Details

Immunogen:	Recombinant protein encompassing a sequence within the C-terminus region of human XE7. The exact sequence is proprietary.
Isotype:	IgG
Characteristics:	Rabbit Polyclonal antibody to XE7 (splicing factor, arginine/serine-rich 17A) XE7 antibody [C2C3], C-term
Purification:	Purified by antigen-affinity chromatography.

## Target Details

Target:	SFRS17A (AKAP17A)
Alternative Name:	XE7 ( <a href="#">AKAP17A Products</a> )

## Target Details

**Background:** This locus encodes a protein kinase A anchoring protein. The encoded protein is part of the spliceosome complex and is involved in the regulation of alternate splicing in some mRNA precursors. Alternatively spliced transcript variants have been identified for this gene.

Cellular Localization: Nucleus speckle

**Molecular Weight:** 81 kDa

**Gene ID:** 8227

## Application Details

**Application Notes:** Suggested dilution Reference IHC (Formalin-fixed paraffin-embedded sections) 1:100-1:1000\* Western blot 1:500-1:3000\* Not tested in other applications. \*Optimal dilutions/concentrations should be determined by the researcher. Suggested dilution Reference IHC (Formalin-fixed paraffin-embedded sections) 1:100-1:1000\* Western blot 1:500-1:3000\*

**Comment:** Positive Control: 293T , HeLaS3 , Raji

**Restrictions:** For Research Use only

## Handling

**Format:** Liquid

**Concentration:** 1 mg/mL

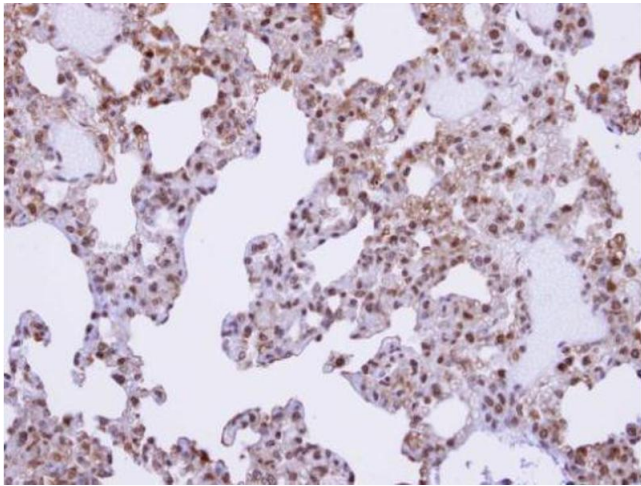
**Buffer:** 0.1M Tris, 0.1M Glycine, 10 % Glycerol ( pH 7). 0.01 % Thimerosal was added as a preservative.

**Preservative:** Thimerosal (Merthiolate)

**Precaution of Use:** This product contains Thimerosal (Merthiolate): a POISONOUS AND HAZARDOUS SUBSTANCE which should be handled by trained staff only.

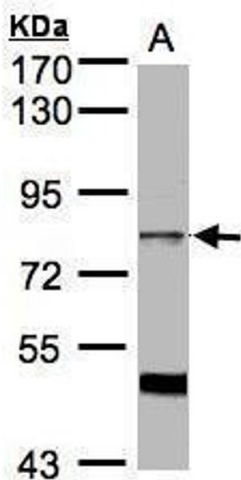
**Storage:** -20 °C

**Storage Comment:** Keep as concentrated solution. Aliquot and store at -20°C or below. Avoid multiple freeze-thaw cycles.



### Immunohistochemistry

**Image 1.** IHC-P Image Immunohistochemical analysis of paraffin-embedded human lung, using XE7, antibody at 1:100 dilution.



### Western Blotting

**Image 2.** WB Image Sample (30µg whole cell lysate) A:HeLa S3, 7.5% SDS PAGE antibody diluted at 1:1000