

Datasheet for ABIN2855281

anti-PFN1 antibody

3 Images

[Go to Product page](#)

Overview

Quantity:	100 µL
Target:	PFN1
Reactivity:	Human
Host:	Rabbit
Clonality:	Polyclonal
Conjugate:	This PFN1 antibody is un-conjugated
Application:	Western Blotting (WB), Immunocytochemistry (ICC), Immunofluorescence (IF), Immunohistochemistry (Paraffin-embedded Sections) (IHC (p))

Product Details

Immunogen:	Recombinant protein encompassing a sequence within the center region of human Profilin 1. The exact sequence is proprietary.
Isotype:	IgG
Cross-Reactivity:	Human, Mouse, Rat
Characteristics:	Rabbit Polyclonal antibody to Profilin 1 (profilin 1) Profilin 1 antibody [N1C3]
Purification:	Purified by antigen-affinity chromatography.

Target Details

Target:	PFN1
Alternative Name:	profilin 1 (PFN1 Products)

Target Details

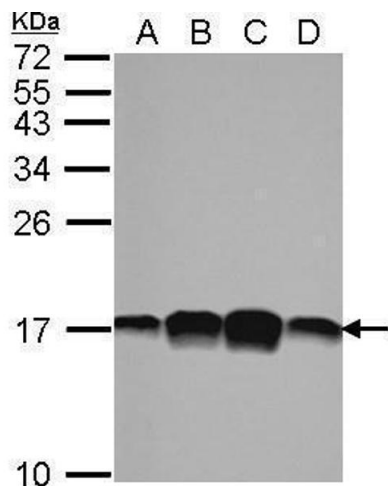
Background:	The protein encoded by this gene is a ubiquitous actin monomer-binding protein belonging to the profilin family. It is thought to regulate actin polymerization in response to extracellular signals. Deletion of this gene is associated with Miller-Dieker syndrome. Cellular Localization: Cytoplasm , cytoskeleton
Molecular Weight:	15 kDa
Gene ID:	5216
UniProt:	P07737
Pathways:	Regulation of Actin Filament Polymerization , Tube Formation , Maintenance of Protein Location

Application Details

Application Notes:	WB: 1:500-1:3000. IHC-P: 1:100-1:1000. Optimal dilutions/concentrations should be determined by the researcher. Not tested in other applications.
Comment:	Positive Control: 293T , A431 , HeLa , HepG2 , mouse spleen , Rat spleen
Restrictions:	For Research Use only

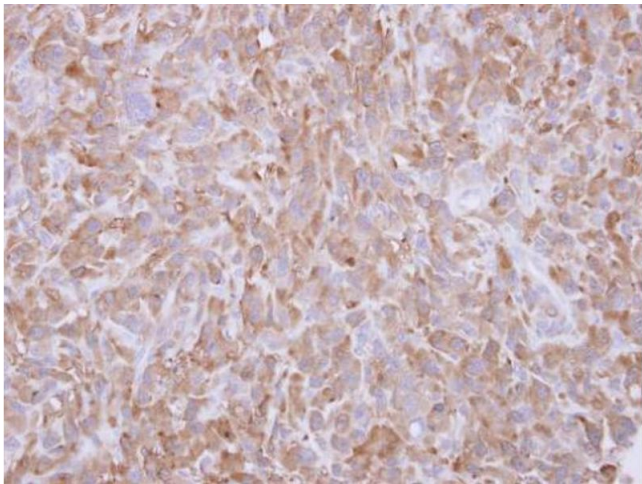
Handling

Format:	Liquid
Concentration:	0.56 mg/mL
Buffer:	1XPBS (pH 7), 1 % BSA, 20 % Glycerol, 0.01 % Thimerosal
Preservative:	Thimerosal (Merthiolate)
Precaution of Use:	This product contains Thimerosal (Merthiolate): a POISONOUS AND HAZARDOUS SUBSTANCE which should be handled by trained staff only.
Storage:	4 °C,-20 °C
Storage Comment:	Store as concentrated solution. Centrifuge briefly prior to opening vial. For short-term storage (1-2 weeks), store at 4°C. For long-term storage, aliquot and store at -20°C or below. Avoid multiple freeze-thaw cycles.



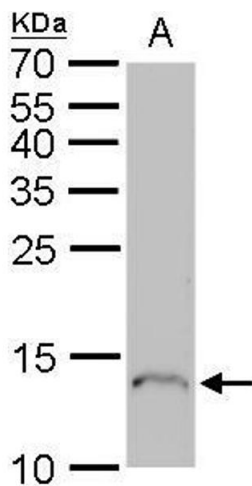
Western Blotting

Image 1. WB Image Sample (30 ug of whole cell lysate) A: 293T B: A431 C: HeLa D: HepG2 15% SDS PAGE antibody diluted at 1:1000



Immunohistochemistry

Image 2. IHC-P Image Immunohistochemical analysis of paraffin-embedded MDA-MB-231 xenograft, using Profilin 1, antibody at 1:500 dilution.



Western Blotting

Image 3. WB Image Profilin 1 antibody detects Profilin 1 protein by Western blot analysis. A. 50 µg mouse spleen lysate/extract 15 % SDS-PAGE Profilin 1 antibody , dilution: 1:500