

Datasheet for ABIN2855282

**anti-TALDO1 antibody (N-Term)****3** Images**1** Publication[Go to Product page](#)

## Overview

Quantity:	100 µL
Target:	TALDO1
Binding Specificity:	N-Term
Reactivity:	Human
Host:	Rabbit
Clonality:	Polyclonal
Conjugate:	This TALDO1 antibody is un-conjugated
Application:	Western Blotting (WB), Immunohistochemistry (Paraffin-embedded Sections) (IHC (p))

## Product Details

Immunogen:	Recombinant protein encompassing a sequence within the N-terminus region of human Transaldolase. The exact sequence is proprietary.
Isotype:	IgG
Cross-Reactivity:	Human, Mouse
Characteristics:	Rabbit Polyclonal antibody to Transaldolase (transaldolase 1) Transaldolase antibody
Purification:	Affinity purified by Protein A.

## Target Details

Target:	TALDO1
---------	--------

## Target Details

Alternative Name:	transaldolase 1 ( <a href="#">TALDO1 Products</a> )
Background:	<p>Transaldolase 1 is a key enzyme of the nonoxidative pentose phosphate pathway providing ribose-5-phosphate for nucleic acid synthesis and NADPH for lipid biosynthesis. This pathway can also maintain glutathione at a reduced state and thus protect sulfhydryl groups and cellular integrity from oxygen radicals. The functional gene of transaldolase 1 is located on chromosome 11 and a pseudogene is identified on chromosome 1 but there are conflicting map locations. The second and third exon of this gene were developed by insertion of a retrotransposable element. This gene is thought to be involved in multiple sclerosis.</p> <p>Cellular Localization: Cytoplasm</p>
Molecular Weight:	38 kDa
Gene ID:	6888
UniProt:	<a href="#">P37837</a>

## Application Details

Application Notes:	WB: 1:500-1:3000. IHC-P: 1:100-1:1000. Optimal dilutions/concentrations should be determined by the researcher. Not tested in other applications.
Comment:	Positive Control: A431 , Mouse brain Validation: Orthogonal
Restrictions:	For Research Use only

## Handling

Format:	Liquid
Concentration:	6.48 mg/mL
Buffer:	0.1M Tris-Glycine ( pH 7), 10 % Glycerol, 0.01 % Thimerosal
Preservative:	Thimerosal (Merthiolate)
Precaution of Use:	This product contains Thimerosal (Merthiolate): a POISONOUS AND HAZARDOUS SUBSTANCE which should be handled by trained staff only.
Storage:	4 °C,-20 °C
Storage Comment:	Store as concentrated solution. Centrifuge briefly prior to opening vial. For short-term storage (1-2 weeks), store at 4°C. For long-term storage, aliquot and store at -20°C or below. Avoid

multiple freeze-thaw cycles.

Publications

Product cited in: Manzione, Rombouts, Steklov, Pasquali, Sablina, Gelens, Qian, Bollen: "Co-regulation of the antagonistic RepoMan:Aurora-B pair in proliferating cells." in: **Molecular biology of the cell**, Vol. 31, Issue 6, pp. 419-438, (2020) ([PubMed](#)).

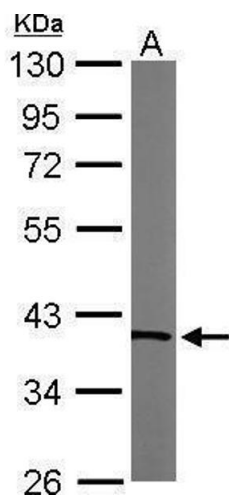
Huang, Zhang, Jiang, Zhang, Xiang, Ren: "FoxM1 Induced Paclitaxel Resistance via Activation of the FoxM1/PHB1/RAF-MEK-ERK Pathway and Enhancement of the ABCA2 Transporter." in: **Molecular therapy oncolytics**, Vol. 14, pp. 196-212, (2019) ([PubMed](#)).

Cohn, Feldman, Weil, Kublanovsky, Levy: "Chromatin associated SETD3 negatively regulates VEGF expression." in: **Scientific reports**, Vol. 6, pp. 37115, (2018) ([PubMed](#)).

Xie, Wu, Mack, Yang, Kim, Hubert, Flavahan, Chu, Bao, Rich: "CDC20 maintains tumor initiating cells." in: **Oncotarget**, Vol. 6, Issue 15, pp. 13241-54, (2016) ([PubMed](#)).

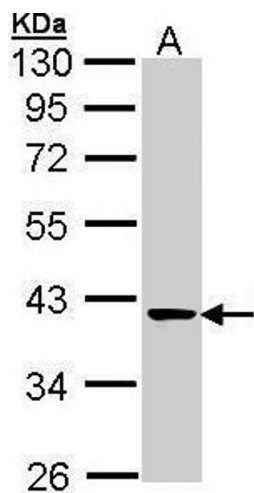
Sanders, Ross-Innes, Beraldi, Carroll, Balasubramanian: "Genome-wide mapping of FOXM1 binding reveals co-binding with estrogen receptor alpha in breast cancer cells." in: **Genome biology**, Vol. 14, Issue 1, pp. R6, (2014) ([PubMed](#)).

Images



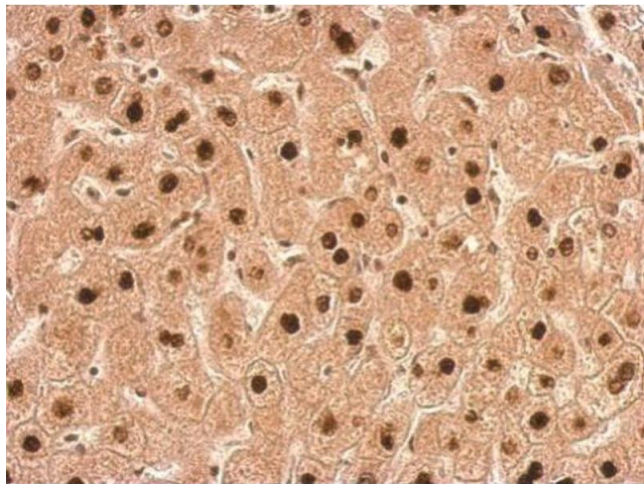
**Western Blotting**

**Image 1.** WB Image Sample (50 ug of whole cell lysate) A: Mouse brain 10% SDS PAGE antibody diluted at 1:1000



#### Western Blotting

**Image 2.** WB Image Sample (30 ug of whole cell lysate) A: A431 , 10% SDS PAGE antibody diluted at 1:1000



#### Immunohistochemistry

**Image 3.** IHC-P Image Transaldolase antibody detects TALDO1 protein at nucleus on human hepatoma by immunohistochemical analysis. Sample: Paraffin-embedded hepatoma. Transaldolase antibody , dilution: 1:500.