

Datasheet for ABIN2855287  
**anti-NF-kB p65 antibody (Center)**

8 Images

6 Publications

[Go to Product page](#)

## Overview

Quantity:	100 µL
Target:	NF-kB p65 (NFkBp65)
Binding Specificity:	Center
Reactivity:	Human, Mouse
Host:	Rabbit
Clonality:	Polyclonal
Conjugate:	This NF-kB p65 antibody is un-conjugated
Application:	Western Blotting (WB), Immunofluorescence (IF), Immunohistochemistry (Paraffin-embedded Sections) (IHC (p)), Immunocytochemistry (ICC), Chromatin Immunoprecipitation (ChIP)

## Product Details

Immunogen:	Recombinant protein encompassing a sequence within the center region of human NFkB p65. The exact sequence is proprietary.
Isotype:	IgG
Cross-Reactivity:	Cow (Bovine), Pig (Porcine), Rat (Rattus)
Cross-Reactivity (Details):	Pig (98 %), Rat (99 %), Bovine (98 %)
Characteristics:	Rabbit Polyclonal antibody to NFkB p65 (v-rel reticuloendotheliosis viral oncogene homolog A (avian)) NFkB p65 antibody
Purification:	Purified by antigen-affinity chromatography.

## Target Details

Target:	NF-kB p65 (NFkBp65)
Alternative Name:	NFkB p65 ( <a href="#">NFkBp65 Products</a> )
Background:	<p>NFKB1 (MIM 164011) or NFKB2 (MIM 164012) is bound to REL (MIM 164910), RELA, or RELB (MIM 604758) to form the NFKB complex. The p50 (NFKB1)/p65 (RELA) heterodimer is the most abundant form of NFKB. The NFKB complex is inhibited by I-kappa-B proteins (NFKBIA, MIM 164008 or NFKBIB, MIM 604495), which inactivate NFKB by trapping it in the cytoplasm. Phosphorylation of serine residues on the I-kappa-B proteins by kinases (IKBKA, MIM 600664, or IKBKB, MIM 603258) marks them for destruction via the ubiquitination pathway, thereby allowing activation of the NFKB complex. Activated NFKB complex translocates into the nucleus and binds DNA at kappa-B-binding motifs such as 5-prime GGGRNNYYCC 3-prime or 5-prime HGGARNYYCC 3-prime (where H is A, C, or T, R is an A or G purine, and Y is a C or T pyrimidine).[supplied by OMIM]</p> <p>Cellular Localization: Nucleus , Cytoplasm</p>
Molecular Weight:	60 kDa
Gene ID:	5970
Pathways:	<a href="#">NF-kappaB Signaling</a> , <a href="#">RTK Signaling</a> , <a href="#">TCR Signaling</a> , <a href="#">TLR Signaling</a> , <a href="#">Fc-epsilon Receptor Signaling Pathway</a> , <a href="#">Neurotrophin Signaling Pathway</a> , <a href="#">Activation of Innate immune Response</a> , <a href="#">Cellular Response to Molecule of Bacterial Origin</a> , <a href="#">Hepatitis C</a> , <a href="#">Toll-Like Receptors Cascades</a> , <a href="#">S100 Proteins</a>

## Application Details

Application Notes:	<p>Suggested dilution Reference ChIP assay Assay-dependent dilution ICC/IF 1:100-1:1000* IHC (Formalin-fixed paraffin-embedded sections) 1:100-1:1000* Western blot 1:500-1:10000* Not tested in other applications. *Optimal dilutions/concentrations should be determined by the researcher.Suggested dilutionReferenceChIP assayAssay-dependent dilution ICC/IF1:100-1:1000* IHC (Formalin-fixed paraffin-embedded sections)1:100-1:1000* Western blot1:500-1:10000*</p>
Comment:	Positive Control: A431 , HepG2 , human NFkB p65-transfected 293T
Restrictions:	For Research Use only

## Handling

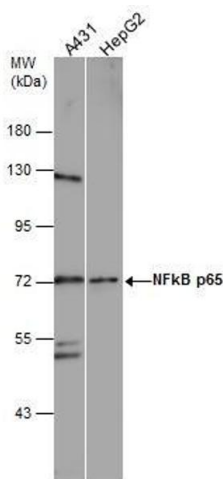
Format:	Liquid
Concentration:	1.03 mg/mL
Buffer:	1XPBS, 20 % Glycerol ( pH 7). 0.025 % ProClin 300 was added as a preservative.
Preservative:	ProClin
Precaution of Use:	This product contains ProClin: a POISONOUS AND HAZARDOUS SUBSTANCE which should be handled by trained staff only.
Storage:	-20 °C
Storage Comment:	Keep as concentrated solution. Aliquot and store at -20°C or below. Avoid multiple freeze-thaw cycles.

## Publications

Product cited in: Qi, Liu, Zhang, Guo: "Platelets induce increased estrogen production through NF-κB and TGF-β1 signaling pathways in endometriotic stromal cells." in: **Scientific reports**, Vol. 10, Issue 1, pp. 1281, (2020) ([PubMed](#)).

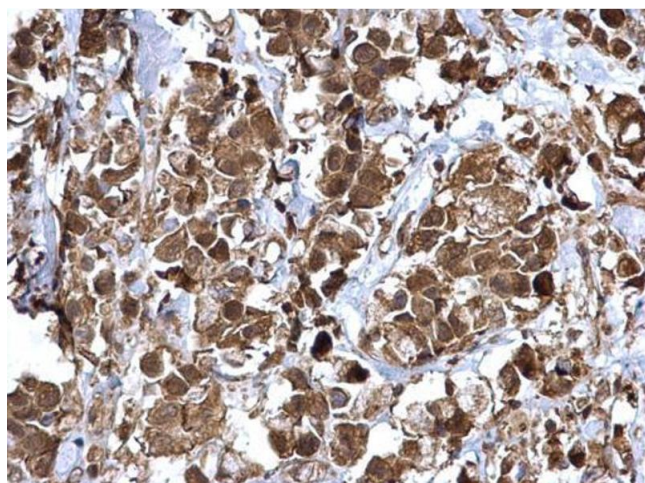
There are more publications referencing this product on: [Product page](#)

## Images



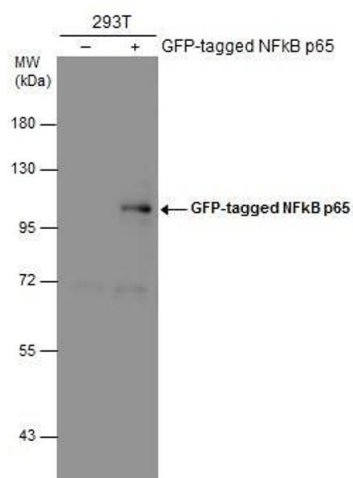
### Western Blotting

**Image 1.** WB Image Various whole cell extracts (30 µg) were separated by 7.5% SDS-PAGE, and the membrane was blotted with NFκB p65 antibody , diluted at 1:1000.



### Immunohistochemistry

**Image 2.** IHC-P Image NFkB p65 antibody detects NFkB p65 protein at cytosol and nucleus on human breast carcinoma by immunohistochemical analysis. Sample: Paraffin-embedded human breast carcinoma. NFkB p65 antibody, dilution: 1:500.



### Western Blotting

**Image 3.** WB Image Non-transfected (-) and transfected (+) 293T whole cell extracts (30 µg) were separated by 7.5% SDS-PAGE, and the membrane was blotted with NFkB p65 antibody, diluted at 1:5000.

Please check the [product details page](#) for more images. Overall 8 images are available for ABIN2855287.