



Datasheet for ABIN2855288
anti-MRPL23 antibody



[Go to Product page](#)

1 Image

Overview

Quantity:	100 µL
Target:	MRPL23
Reactivity:	Human
Host:	Rabbit
Clonality:	Polyclonal
Conjugate:	This MRPL23 antibody is un-conjugated
Application:	Immunohistochemistry (Paraffin-embedded Sections) (IHC (p))

Product Details

Immunogen:	Recombinant protein encompassing a sequence within the center region of human MRPL23. The exact sequence is proprietary.
Isotype:	IgG
Cross-Reactivity:	Human, Rat
Characteristics:	Rabbit polyclonal antibody to MRPL23 (mitochondrial ribosomal protein L23) MRPL23 antibody [N1C3]
Purification:	Purified by antigen-affinity chromatography.

Target Details

Target:	MRPL23
Alternative Name:	mitochondrial ribosomal protein L23 (MRPL23 Products)

Target Details

Background: Mammalian mitochondrial ribosomal proteins are encoded by nuclear genes and help in protein synthesis within the mitochondrion. Mitochondrial ribosomes (mitoribosomes) consist of a small 28S subunit and a large 39S subunit. They have an estimated 75 % protein to rRNA composition compared to prokaryotic ribosomes, where this ratio is reversed. Another difference between mammalian mitoribosomes and prokaryotic ribosomes is that the latter contain a 5S rRNA. Among different species, the proteins comprising the mitoribosome differ greatly in sequence, and sometimes in biochemical properties, which prevents easy recognition by sequence homology. This gene encodes a 39S subunit protein. The gene is biallelically expressed, despite its location within a region of imprinted genes on chromosome 11.

Cellular Localization: Mitochondrion

Molecular Weight: 18 kDa

Gene ID: 6150

UniProt: [Q16540](#)

Application Details

Application Notes: IHC-P: 1:100-1:1000. Optimal dilutions/concentrations should be determined by the researcher. Not tested in other applications.

Restrictions: For Research Use only

Handling

Format: Liquid

Concentration: 0.61 mg/mL

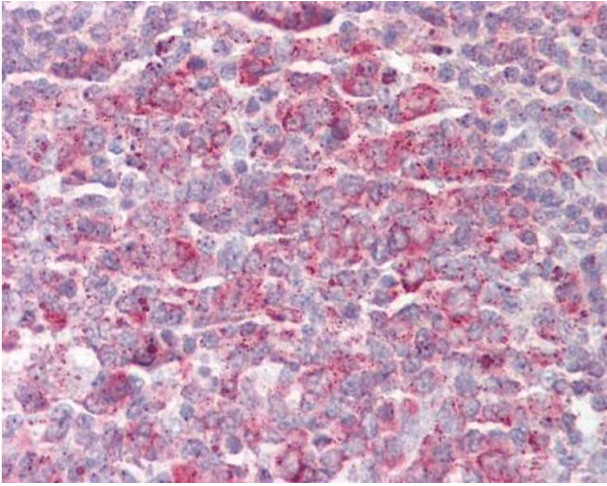
Buffer: 0.1M Tris-Glycine (pH 7), 10 % Glycerol, 0.01 % Thimerosal

Preservative: Thimerosal (Merthiolate)

Precaution of Use: This product contains Thimerosal (Merthiolate): a POISONOUS AND HAZARDOUS SUBSTANCE which should be handled by trained staff only.

Storage: 4 °C,-20 °C

Storage Comment: Store as concentrated solution. Centrifuge briefly prior to opening vial. For short-term storage (1-2 weeks), store at 4°C. For long-term storage, aliquot and store at -20°C or below. Avoid multiple freeze-thaw cycles.



Immunohistochemistry

Image 1. IHC-P Image MRPL23 antibody [N1C3] detects MRPL23 protein at mitochondrion on human tonsil by immunohistochemical analysis. Sample: Paraffin-embedded tonsil. MRPL23 antibody [N1C3] , dilution: 1:100.