



Datasheet for ABIN2855291  
**anti-TCF25 antibody (C-Term)**



[Go to Product page](#)

4 Images

Overview

Quantity:	100 µL
Target:	TCF25
Binding Specificity:	C-Term
Reactivity:	Human
Host:	Rabbit
Clonality:	Polyclonal
Conjugate:	This TCF25 antibody is un-conjugated
Application:	Western Blotting (WB), Immunofluorescence (IF), Immunohistochemistry (Paraffin-embedded Sections) (IHC (p)), Immunocytochemistry (ICC)

Product Details

Immunogen:	Recombinant protein encompassing a sequence within the C-terminus region of human NULP1. The exact sequence is proprietary.
Isotype:	IgG
Cross-Reactivity:	Human, Mouse
Characteristics:	Rabbit Polyclonal antibody to NULP1 (transcription factor 25 (basic helix-loop-helix)) NULP1 antibody [C1C3]
Purification:	Purified by antigen-affinity chromatography.

Target Details

Target:	TCF25
---------	-------

## Target Details

---

Alternative Name:	transcription factor 25 ( <a href="#">TCF25 Products</a> )
Background:	TCF25 is a member of the basic helix-loop-helix (bHLH) family of transcription factors that are important in embryonic development (Steen and Lindholm, 2008 [PubMed 18068114]).[supplied by OMIM]  Cellular Localization: Nucleus
Molecular Weight:	77 kDa
Gene ID:	22980
UniProt:	<a href="#">Q9BQ70</a>

## Application Details

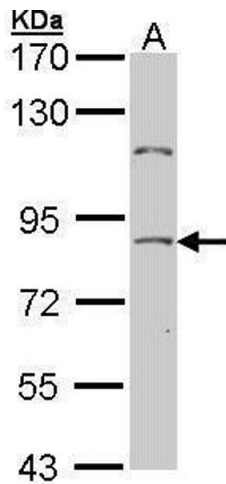
---

Application Notes:	WB: 1:500-1:3000. ICC/IF: 1:100-1:1000. IHC-P: 1:100-1:1000. Optimal dilutions/concentrations should be determined by the researcher. Not tested in other applications.
Comment:	Positive Control: HeLa , Mouse brain
Restrictions:	For Research Use only

## Handling

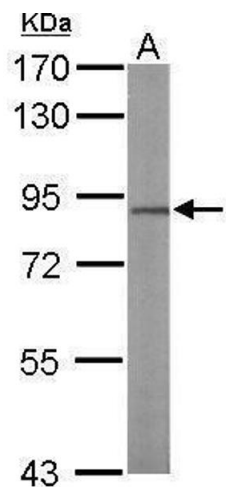
---

Format:	Liquid
Concentration:	1 mg/mL
Buffer:	0.1M Tris-Glycine ( pH 7), 10 % Glycerol, 0.01 % Thimerosal
Preservative:	Thimerosal (Merthiolate)
Precaution of Use:	This product contains Thimerosal (Merthiolate): a POISONOUS AND HAZARDOUS SUBSTANCE which should be handled by trained staff only.
Storage:	4 °C,-20 °C
Storage Comment:	Store as concentrated solution. Centrifuge briefly prior to opening vial. For short-term storage (1-2 weeks), store at 4°C. For long-term storage, aliquot and store at -20°C or below. Avoid multiple freeze-thaw cycles.



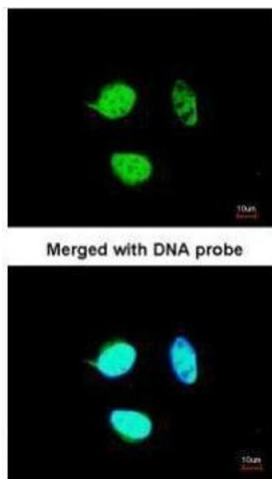
#### Western Blotting

**Image 1.** WB Image Sample (30 ug of whole cell lysate) A:  
Hela 7.5% SDS PAGE antibody diluted at 1:500



#### Western Blotting

**Image 2.** WB Image Sample (50 ug of whole cell lysate) A:  
Mouse brain 7.5% SDS PAGE antibody diluted at 1:1000



#### Immunofluorescence

**Image 3.** ICC/IF Image Immunofluorescence analysis of  
paraformaldehyde-fixed HeLa, using NULP1, antibody at  
1:200 dilution.

Please check the [product details page](#) for more images. Overall 4 images are available for ABIN2855291.