

Datasheet for ABIN2855295
anti-FOXM1 antibody (N-Term)

2 Images

[Go to Product page](#)

Overview

Quantity:	100 µL
Target:	FOXM1
Binding Specificity:	N-Term
Reactivity:	Human
Host:	Rabbit
Clonality:	Polyclonal
Conjugate:	This FOXM1 antibody is un-conjugated
Application:	Western Blotting (WB), Immunohistochemistry (Paraffin-embedded Sections) (IHC (p))

Product Details

Immunogen:	Recombinant protein encompassing a sequence within the N-terminus region of human FOXM1. The exact sequence is proprietary.
Isotype:	IgG
Cross-Reactivity:	Human
Characteristics:	Rabbit Polyclonal antibody to FOXM1 (forkhead box M1) FOXM1 antibody
Purification:	Purified by antigen-affinity chromatography.

Target Details

Target:	FOXM1
---------	-------

Target Details

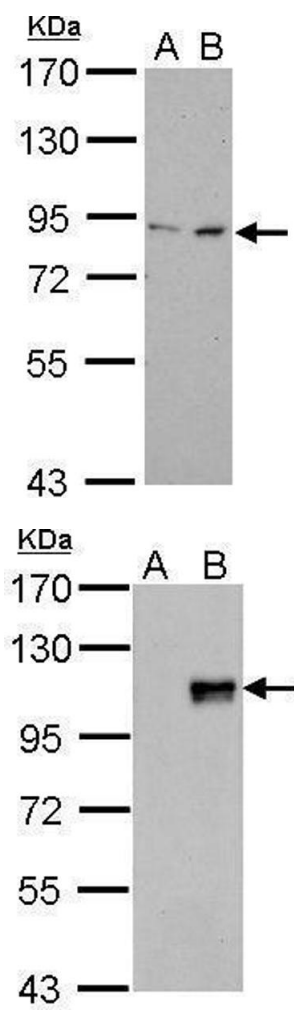
Alternative Name:	forkhead box M1 (FOX M1 Products)
Background:	Cellular Localization: Nucleus
Molecular Weight:	84 kDa
Gene ID:	2305
UniProt:	Q08050
Pathways:	Positive Regulation of Response to DNA Damage Stimulus

Application Details

Application Notes:	WB: 1:500-1:3000. Optimal dilutions/concentrations should be determined by the researcher. Not tested in other applications.
Restrictions:	For Research Use only

Handling

Format:	Liquid
Concentration:	0.72 mg/mL
Buffer:	1XPBS (pH 7), 20 % Glycerol, 0.025 % ProClin 300
Preservative:	ProClin
Precaution of Use:	This product contains ProClin: a POISONOUS AND HAZARDOUS SUBSTANCE which should be handled by trained staff only.
Storage:	4 °C,-20 °C
Storage Comment:	Store as concentrated solution. Centrifuge briefly prior to opening vial. For short-term storage (1-2 weeks), store at 4°C. For long-term storage, aliquot and store at -20°C or below. Avoid multiple freeze-thaw cycles.



Western Blotting

Image 1. WB Image FOXM1 antibody detects FOXM1 protein by Western blot analysis. A. 30 µg 293T whole cell lysate/extract B. 30 µg A431 whole cell lysate/extract 7.5 % SDS-PAGE FOXM1 antibody , dilution: 1:500

Western Blotting

Image 2. WB Image FOXM1 antibody detects FOXM1 protein by Western blot analysis. A.30 µg 293T whole cell lysate/extract B.30 µg whole cell lysate/extract of human FOXM1-transfected 293T cells 7.5 % SDS-PAGE FOXM1 antibody , dilution: 1:5000