

Datasheet for ABIN2855297

**anti-POM121 antibody (N-Term)**

8 Images

5 Publications

[Go to Product page](#)

## Overview

Quantity:	100 µL
Target:	POM121
Binding Specificity:	N-Term
Reactivity:	Human
Host:	Rabbit
Clonality:	Polyclonal
Conjugate:	This POM121 antibody is un-conjugated
Application:	Western Blotting (WB), Immunofluorescence (IF), Immunohistochemistry (Paraffin-embedded Sections) (IHC (p)), Immunocytochemistry (ICC)

## Product Details

Immunogen:	Recombinant protein encompassing a sequence within the N-terminus region of human POM121. The exact sequence is proprietary.
Isotype:	IgG
Cross-Reactivity:	Human, Mouse
Characteristics:	Rabbit Polyclonal antibody to POM121 (POM121 membrane glycoprotein (rat)) POM121 antibody [N2N3]
Purification:	Purified by antigen-affinity chromatography.

## Target Details

Target:	POM121
---------	--------

## Target Details

Alternative Name:	POM121 transmembrane nucleoporin ( <a href="#">POM121 Products</a> )
Background:	<p>The nuclear envelope creates distinct nuclear and cytoplasmic compartments in eukaryotic cells. It consists of two concentric membranes perforated by nuclear pores, large protein complexes that form aqueous channels to regulate the flow of macromolecules between the nucleus and the cytoplasm. These complexes are composed of at least 100 different polypeptide subunits, many of which belong to the nucleoporin family. This gene encodes a member of the FG-repeat-containing nucleoporins. The protein encoded by this gene is an integral membrane protein that localizes to the central spoke ring complex and participates in anchoring the nuclear pore complex to the nuclear envelope. Alternatively spliced variants that encode different protein isoforms have been described but the full-length nature of only one has been determined.</p> <p>Cellular Localization: Nucleus , nuclear pore complex , Nucleus membrane, Single-pass membrane protein , Endoplasmic reticulum membrane, Single-pass membrane protein (By similarity)</p>
Molecular Weight:	128 kDa
Gene ID:	9883
UniProt:	<a href="#">Q96HA1</a>

## Application Details

Application Notes:	WB: 1:500-1:3000. ICC/IF: 1:100-1:1000. IHC-P: 1:100-1:1000. Optimal dilutions/concentrations should be determined by the researcher. Not tested in other applications.
Comment:	Positive Control: A549 Validation: Orthogonal
Restrictions:	For Research Use only

## Handling

Format:	Liquid
Concentration:	0.16 mg/mL
Buffer:	1XPBS ( pH 7), 1 % BSA, 20 % Glycerol, 0.025 % ProClin 300
Preservative:	ProClin

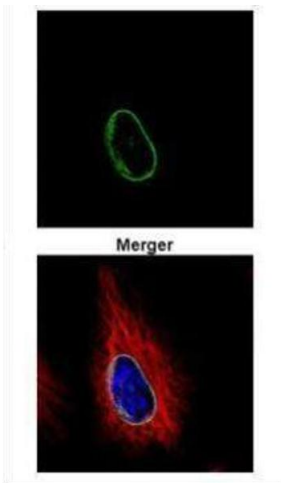
Handling

Precaution of Use:	This product contains ProClin: a POISONOUS AND HAZARDOUS SUBSTANCE which should be handled by trained staff only.
Storage:	4 °C,-20 °C
Storage Comment:	Store as concentrated solution. Centrifuge briefly prior to opening vial. For short-term storage (1-2 weeks), store at 4°C. For long-term storage, aliquot and store at -20°C or below. Avoid multiple freeze-thaw cycles.

Publications

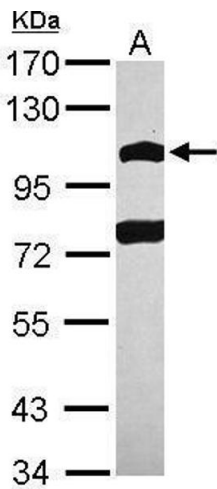
Product cited in:	Rodriguez-Gil, Hu, Greer: "Dishevelled proteins are associated with olfactory sensory neuron presynaptic terminals." in: <b>PLoS ONE</b> , Vol. 8, Issue 2, pp. e56561, (2013) ( <a href="#">PubMed</a> ).
-------------------	--

Images



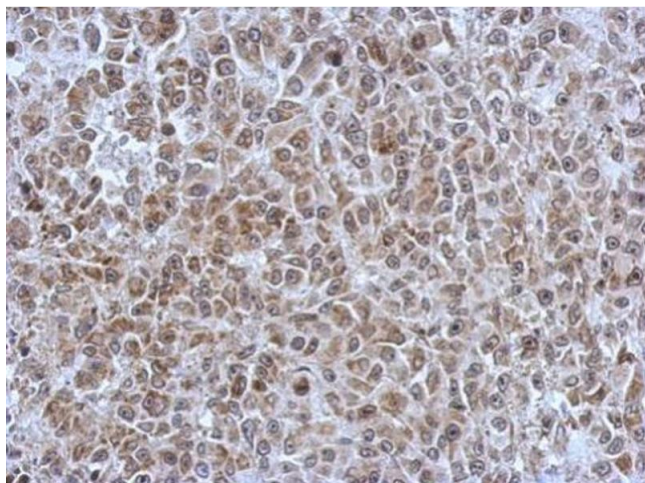
**Immunofluorescence**

**Image 1.** ICC/IF Image Confocal immunofluorescence analysis (Olympus FV10i) of methanol-fixed HeLa, using POM121, antibody (Green) at 1:500 dilution. Alpha-tubulin filaments were labeled with (Red) at 1:500.



**Western Blotting**

**Image 2.** WB Image Sample (30 ug of whole cell lysate) A: A549 7.5% SDS PAGE antibody diluted at 1:2000



#### Immunohistochemistry

**Image 3.** IHC-P Image Immunohistochemical analysis of paraffin-embedded HBL435 xenograft, using POM121, antibody at 1:500 dilution.

Please check the [product details page](#) for more images. Overall 8 images are available for ABIN2855297.