

Datasheet for ABIN2855299

**anti-CIZ1 antibody**

## 4 Images

[Go to Product page](#)

## Overview

Quantity:	100 µL
Target:	CIZ1
Reactivity:	Human
Host:	Rabbit
Clonality:	Polyclonal
Conjugate:	This CIZ1 antibody is un-conjugated
Application:	Western Blotting (WB), Immunoprecipitation (IP), Immunohistochemistry (Paraffin-embedded Sections) (IHC (p)), Immunocytochemistry (ICC), Immunofluorescence (IF)

## Product Details

Immunogen:	Recombinant protein encompassing a sequence within the center region of human CIZ1. The exact sequence is proprietary.
Isotype:	IgG
Cross-Reactivity:	Human
Characteristics:	Rabbit Polyclonal antibody to CIZ1 (CDKN1A interacting zinc finger protein 1) CIZ1 antibody [N2C1], Internal
Purification:	Purified by antigen-affinity chromatography.

## Target Details

Target:	CIZ1
Alternative Name:	CDKN1A interacting zinc finger protein 1 ( <a href="#">CIZ1 Products</a> )

## Target Details

Background: May regulate the subcellular localization of CIP/WAF1.

Cellular Localization: Nucleus

Molecular Weight: 100 kDa

Gene ID: 25792

UniProt: [Q9ULV3](#)

Pathways: [Maintenance of Protein Location](#)

## Application Details

Application Notes: WB: 1:500-1:3000. ICC/IF: 1:100-1:1000. IHC-P: 1:100-1:1000. IP: 1:100-1:500. Optimal dilutions/concentrations should be determined by the researcher. Not tested in other applications.

Comment: Positive Control: HeLa

Restrictions: For Research Use only

## Handling

Format: Liquid

Concentration: 1 mg/mL

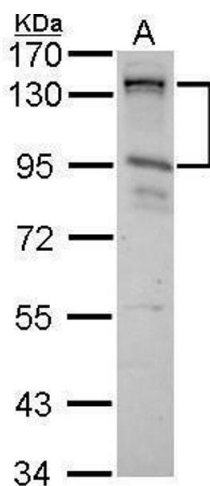
Buffer: 1XPBS ( pH 7), 1 % BSA, 20 % Glycerol, 0.01 % Thimerosal

Preservative: Thimerosal (Merthiolate)

Precaution of Use: This product contains Thimerosal (Merthiolate): a POISONOUS AND HAZARDOUS SUBSTANCE which should be handled by trained staff only.

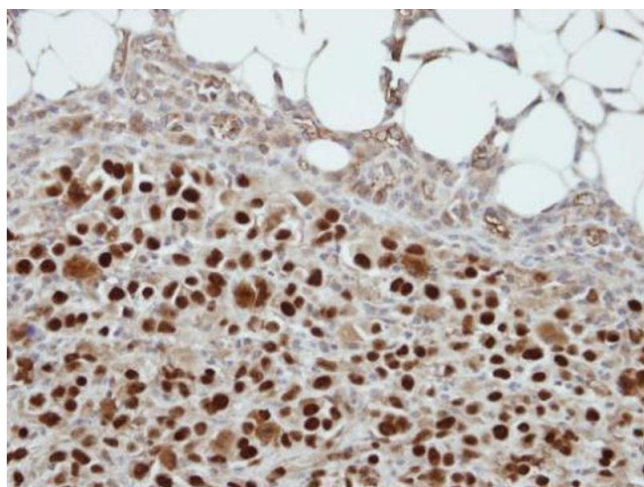
Storage: 4 °C,-20 °C

Storage Comment: Store as concentrated solution. Centrifuge briefly prior to opening vial. For short-term storage (1-2 weeks), store at 4°C. For long-term storage, aliquot and store at -20°C or below. Avoid multiple freeze-thaw cycles.



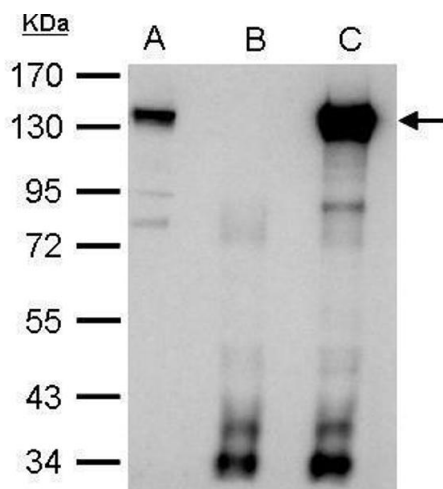
### Western Blotting

**Image 1.** WB Image CIZ1 antibody [N2C1], Internal detects CIZ1 protein by Western blot analysis. A. 30 µg HeLa whole cell lysate/extract 7.5 % SDS-PAGE CIZ1 antibody [N2C1], Internal , dilution: 1:1000



### Immunohistochemistry

**Image 2.** IHC-P Image Immunohistochemical analysis of paraffin-embedded ES2 xenograft, using CIZ1, antibody at 1:500 dilution.



### Immunoprecipitation

**Image 3.** IP Image CIZ1 antibody immunoprecipitates CIZ1 protein in IP experiments. IP Sample: 1000 µg HeLa whole cell lysate/extract A. 40 µg HeLa whole cell lysate/extract B. Control with 2.5 µg of preimmune rabbit IgG C. Immunoprecipitation of CIZ1 protein by 2.5 µg of CIZ1 antibody , 7.5% SDS-PAGE The immunoprecipitated CIZ1 protein was detected by CIZ1 antibody , diluted at 1:1000. EasyBlot anti-rabbit IgG was used as a secondary reagent.

Please check the [product details page](#) for more images. Overall 4 images are available for ABIN2855299.