

Datasheet for ABIN2855300
anti-UQCRFS1 antibody

4 Images

[Go to Product page](#)

Overview

Quantity:	100 µL
Target:	UQCRFS1
Reactivity:	Human
Host:	Rabbit
Clonality:	Polyclonal
Conjugate:	This UQCRFS1 antibody is un-conjugated
Application:	Western Blotting (WB), Immunofluorescence (IF), Immunocytochemistry (ICC)

Product Details

Immunogen:	Recombinant protein encompassing a sequence within the center region of human UQCRFS1. The exact sequence is proprietary.
Isotype:	IgG
Cross-Reactivity:	Human, Mouse
Characteristics:	Rabbit Polyclonal antibody to UQCRFS1 (ubiquinol-cytochrome c reductase, Rieske iron-sulfur polypeptide 1) UQCRFS1 antibody [N1C3]
Purification:	Purified by antigen-affinity chromatography.

Target Details

Target:	UQCRFS1
Alternative Name:	ubiquinol-cytochrome c reductase, Rieske iron-sulfur polypeptide 1 (UQCRFS1 Products)

Target Details

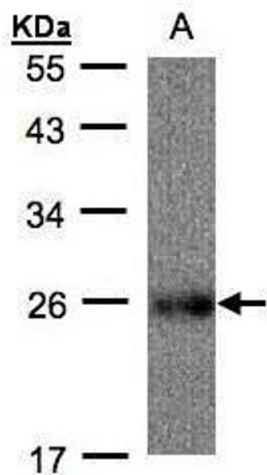
Background:	Component of the ubiquinol-cytochrome c reductase complex (complex III or cytochrome b-c1 complex), which is a respiratory chain that generates an electrochemical potential coupled to ATP synthesis. The transit peptide of the Rieske protein seems to form part of the bc1 complex and is considered to be the subunit 11/IX of that complex. Cellular Localization: Mitochondrion inner membrane
Molecular Weight:	30 kDa
Gene ID:	7386
UniProt:	P47985
Pathways:	Proton Transport

Application Details

Application Notes:	WB: 1:500-1:3000. ICC/IF: 1:100-1:1000. Optimal dilutions/concentrations should be determined by the researcher. Not tested in other applications.
Comment:	Positive Control: Mouse brain , Raji
Restrictions:	For Research Use only

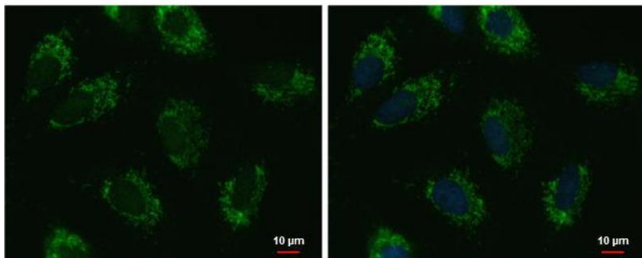
Handling

Format:	Liquid
Concentration:	0.32 mg/mL
Buffer:	0.1M Tris-Glycine (pH 7), 10 % Glycerol, 0.01 % Thimerosal
Preservative:	Thimerosal (Merthiolate)
Precaution of Use:	This product contains Thimerosal (Merthiolate): a POISONOUS AND HAZARDOUS SUBSTANCE which should be handled by trained staff only.
Storage:	4 °C, -20 °C
Storage Comment:	Store as concentrated solution. Centrifuge briefly prior to opening vial. For short-term storage (1-2 weeks), store at 4°C. For long-term storage, aliquot and store at -20°C or below. Avoid multiple freeze-thaw cycles.



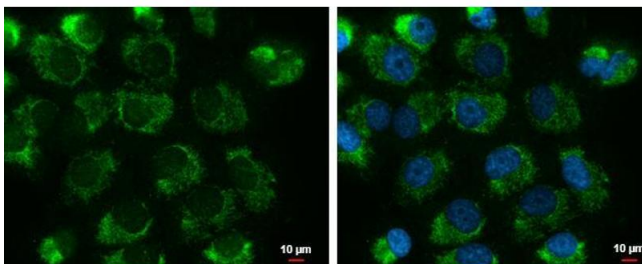
Western Blotting

Image 1. WB Image Sample(30 ug whole cell lysate) A: Raji, 12% SDS PAGE antibody diluted at 1:500



Immunofluorescence

Image 2. ICC/IF Image UQCERS1 antibody [N1C3] detects UQCERS1 protein at mitochondria by immunofluorescent analysis. Sample: A549 cells were fixed in 2% paraformaldehyde/culture medium at 37°C for 30 min. Green: UQCERS1 protein stained by UQCERS1 antibody [N1C3], diluted at 1:500. Blue: Hoechst 33342 staining. Scale bar = 10 μm.



Immunofluorescence

Image 3. ICC/IF Image UQCERS1 antibody [N1C3] detects UQCERS1 protein at mitochondria by immunofluorescent analysis. Sample: H1299 cells were fixed in 2% paraformaldehyde/culture medium at 37°C for 30 min. Green: UQCERS1 protein stained by UQCERS1 antibody [N1C3], diluted at 1:500. Blue: Hoechst 33342 staining.

Please check the [product details page](#) for more images. Overall 4 images are available for ABIN2855300.