

Datasheet for ABIN2855302

anti-Cofilin antibody[Go to Product page](#)

7 Images

2 Publications

Overview

Quantity:	100 µL
Target:	Cofilin (CFL1)
Reactivity:	Human
Host:	Rabbit
Clonality:	Polyclonal
Conjugate:	This Cofilin antibody is un-conjugated
Application:	Western Blotting (WB), Immunofluorescence (IF), Immunohistochemistry (Paraffin-embedded Sections) (IHC (p)), Immunocytochemistry (ICC), Immunohistochemistry (Frozen Sections) (IHC (fro))

Product Details

Immunogen:	Recombinant protein encompassing a sequence within the center region of human Cofilin 1. The exact sequence is proprietary.
Isotype:	IgG
Cross-Reactivity:	Human, Mouse, Rat
Characteristics:	Rabbit Polyclonal antibody to Cofilin 1 (cofilin 1 (non-muscle)) Cofilin 1 antibody
Purification:	Purified by antigen-affinity chromatography.
Grade:	KO Validated

Target Details

Target:	Cofilin (CFL1)
Alternative Name:	cofilin 1 (CFL1 Products)
Background:	<p>Cofilin is a widely distributed intracellular actin-modulating protein that binds and depolymerizes filamentous F-actin and inhibits the polymerization of monomeric G-actin in a pH-dependent manner. It is involved in the translocation of actin-cofilin complex from cytoplasm to nucleus.[supplied by OMIM]</p> <p>Cellular Localization: Nucleus matrix , Cytoplasm , cytoskeleton</p>
Molecular Weight:	19 kDa
Gene ID:	1072
UniProt:	P23528
Pathways:	Regulation of Cell Size , Tube Formation , Protein targeting to Nucleus , CXCR4-mediated Signaling Events

Application Details

Application Notes:	WB: 1:500-1:3000. ICC/IF: 1:100-1:1000. IHC-P: 1:100-1:1000. Optimal dilutions/concentrations should be determined by the researcher. Not tested in other applications.
Comment:	Positive Control: 293T Validation: KO/KD, Orthogonal
Restrictions:	For Research Use only

Handling

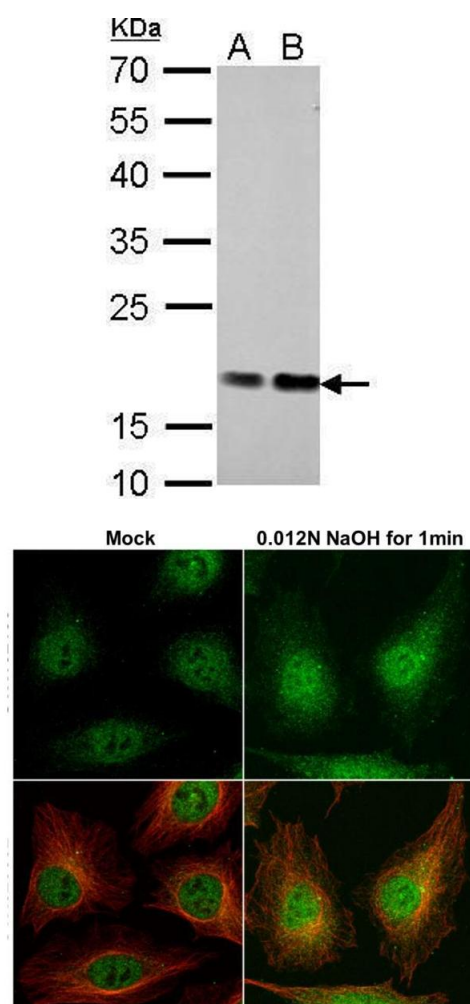
Format:	Liquid
Concentration:	1 mg/mL
Buffer:	1XPBS (pH 7), 20 % Glycerol, 0.01 % Thimerosal
Preservative:	Thimerosal (Merthiolate)
Precaution of Use:	This product contains Thimerosal (Merthiolate): a POISONOUS AND HAZARDOUS SUBSTANCE which should be handled by trained staff only.
Storage:	4 °C,-20 °C
Storage Comment:	Store as concentrated solution. Centrifuge briefly prior to opening vial. For short-term storage

(1-2 weeks), store at 4°C. For long-term storage, aliquot and store at -20°C or below. Avoid multiple freeze-thaw cycles.

Publications

Product cited in: Ochiai, Hayashi, Umeda, Yoshimura, Harada, Shimizu, Nakano, Saitoh, Liu, Yamamoto, Okamura, Ohkawa, Kimura, Nikaido: "Genome-wide kinetic properties of transcriptional bursting in mouse embryonic stem cells." in: **Science advances**, Vol. 6, Issue 25, pp. eaaz6699, (2020) ([PubMed](#)).

Images

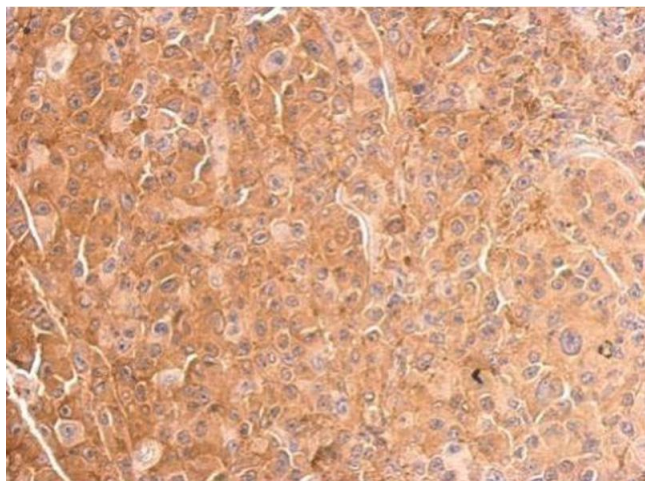


Western Blotting

Image 1. WB Image Cofilin 1 antibody detects CFL1 protein by Western blot analysis. A. 30 µg PC-12 whole cell lysate/extract B. 30 µg Rat-2 whole cell lysate/extract 12 % SDS-PAGE Cofilin 1 antibody , dilution: 1:1000

Immunofluorescence

Image 2. ICC/IF Image Cofilin 1 antibody detects Cofilin 1 protein at cytoplasm and nucleus by immunofluorescent analysis. Samples: HeLa cells mock (left) and treated with 0.012 N NaOH/PBS for 1 min (right) were fixed in 4% paraformaldehyde at RT for 15 min. Green: Cofilin 1 protein stained by Cofilin 1 antibody , diluted at 1:1000. Red: alpha Tubulin, a cytoskeleton marker, stained by alpha Tubulin antibody [GT114] , diluted at 1:1000.



Immunohistochemistry

Image 3. IHC-P Image Cofilin 1 antibody detects CFL1 protein at cytosol on HBL435 xenograft by immunohistochemical analysis. Sample: Paraffin-embedded HBL435 xenograft. Cofilin 1 antibody , dilution: 1:500.

Please check the [product details page](#) for more images. Overall 7 images are available for ABIN2855302.